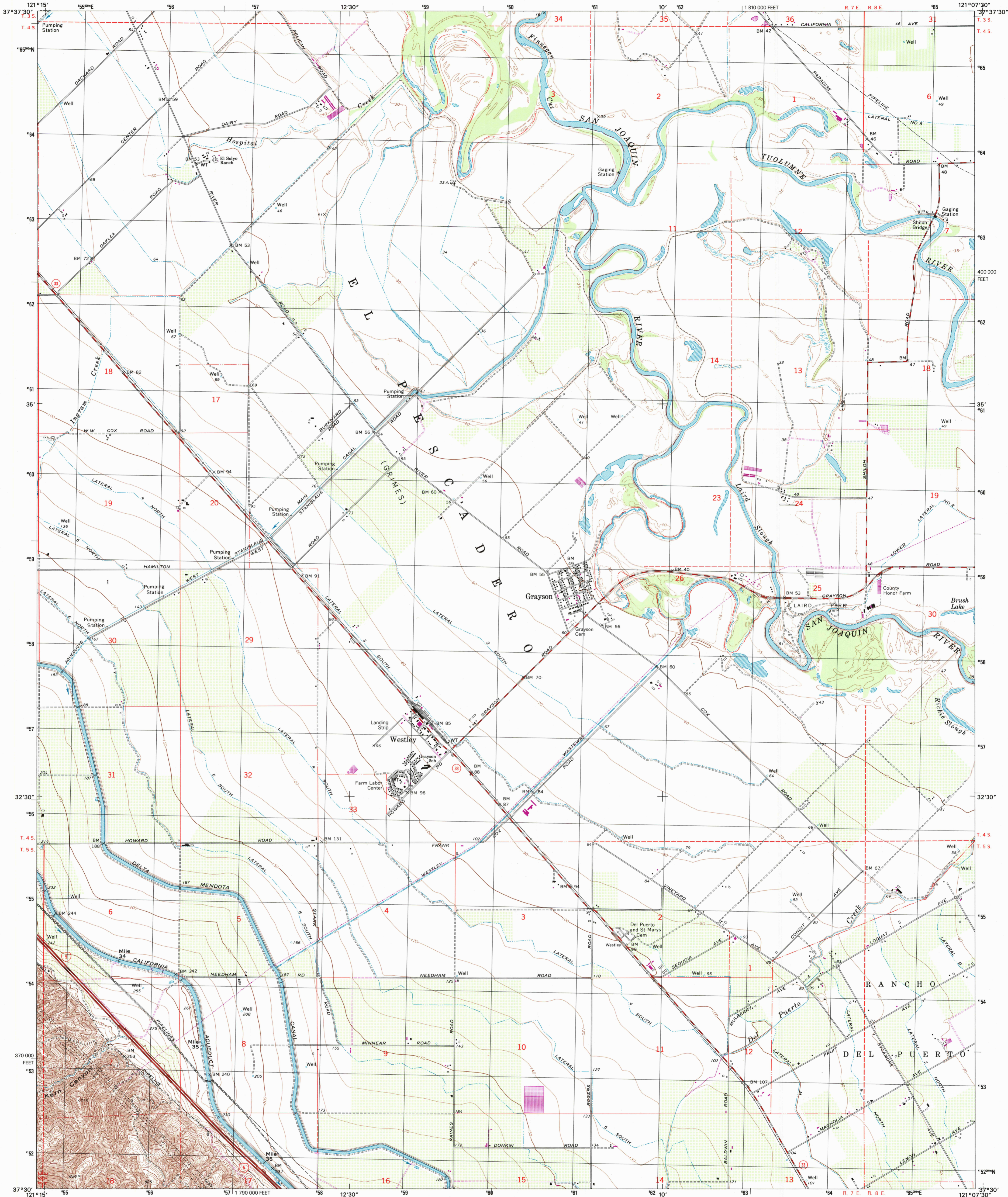


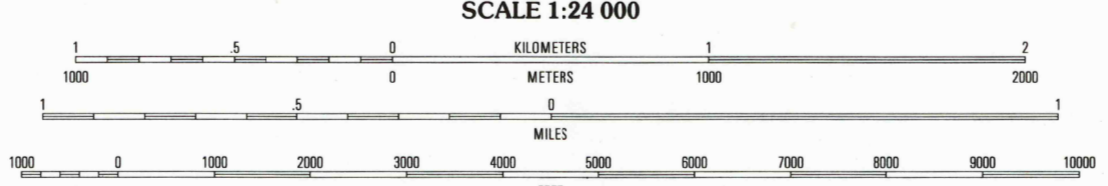
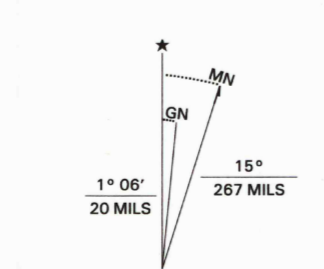


U.S. DEPARTMENT OF THE INTERIOR  
U.S. GEOLOGICAL SURVEY

WESTLEY QUADRANGLE  
CALIFORNIA-STANISLAUS CO.  
7.5-MINUTE SERIES (TOPOGRAPHIC)

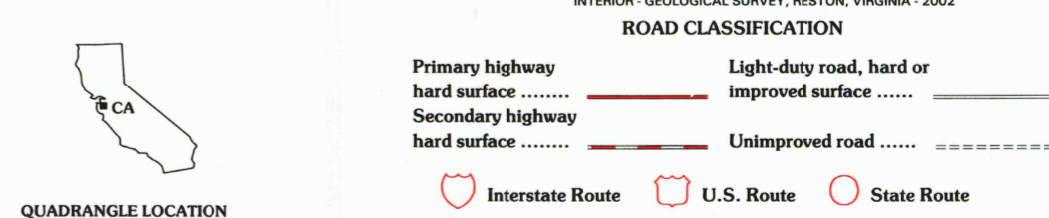


Produced by the United States Geological Survey  
Topography compiled 1968. Planimetry derived from imagery taken 1978 and other sources. Photointerpreted using imagery taken 1999; no major culture or drainage changes observed. Public Land Survey System and survey control current as of 1969. Boundaries verified 2002.  
Information shown in purple may not meet USGS content standards and may conflict with previously mapped contours.  
North American Datum of 1927 (NAD 27). Projection and 1000-meter grid: Universal Transverse Mercator, zone 10 10 000-foot tick: California Coordinate System of 1977 (zone 3).  
North American Datum of 1983 (NAD 83) is shown by dashed corner ticks. The values of the shift between NAD 27 and NAD 83 for 7.5-minute intersections are obtainable from National Geodetic Survey NADCON software.  
Where omitted, land lines have not been established.



CONTOUR INTERVAL 10 FEET  
SUPPLEMENTARY CONTOUR INTERVAL 5 FEET  
NATIONAL GEODETIC VERTICAL DATUM OF 1929  
(TO CONVERT ELEVATIONS TO THE NORTH AMERICAN VERTICAL DATUM OF 1988, ADD 2 FEET)  
TO CONVERT FEET TO METERS, MULTIPLY BY 0.3048

THIS MAP COMPLIES WITH NATIONAL MAP ACCURACY STANDARDS  
FOR SALE BY U.S. GEOLOGICAL SURVEY, P.O. BOX 25286, DENVER, COLORADO 80225  
A FOLDER DESCRIBING TOPOGRAPHIC MAPS AND SYMBOLS IS AVAILABLE ON REQUEST



QUADRANGLE LOCATION

1	2	3
4	5	6
7	8	

WESTLEY, CA  
1999

NIMA 1759 II SW-SERIES V895

