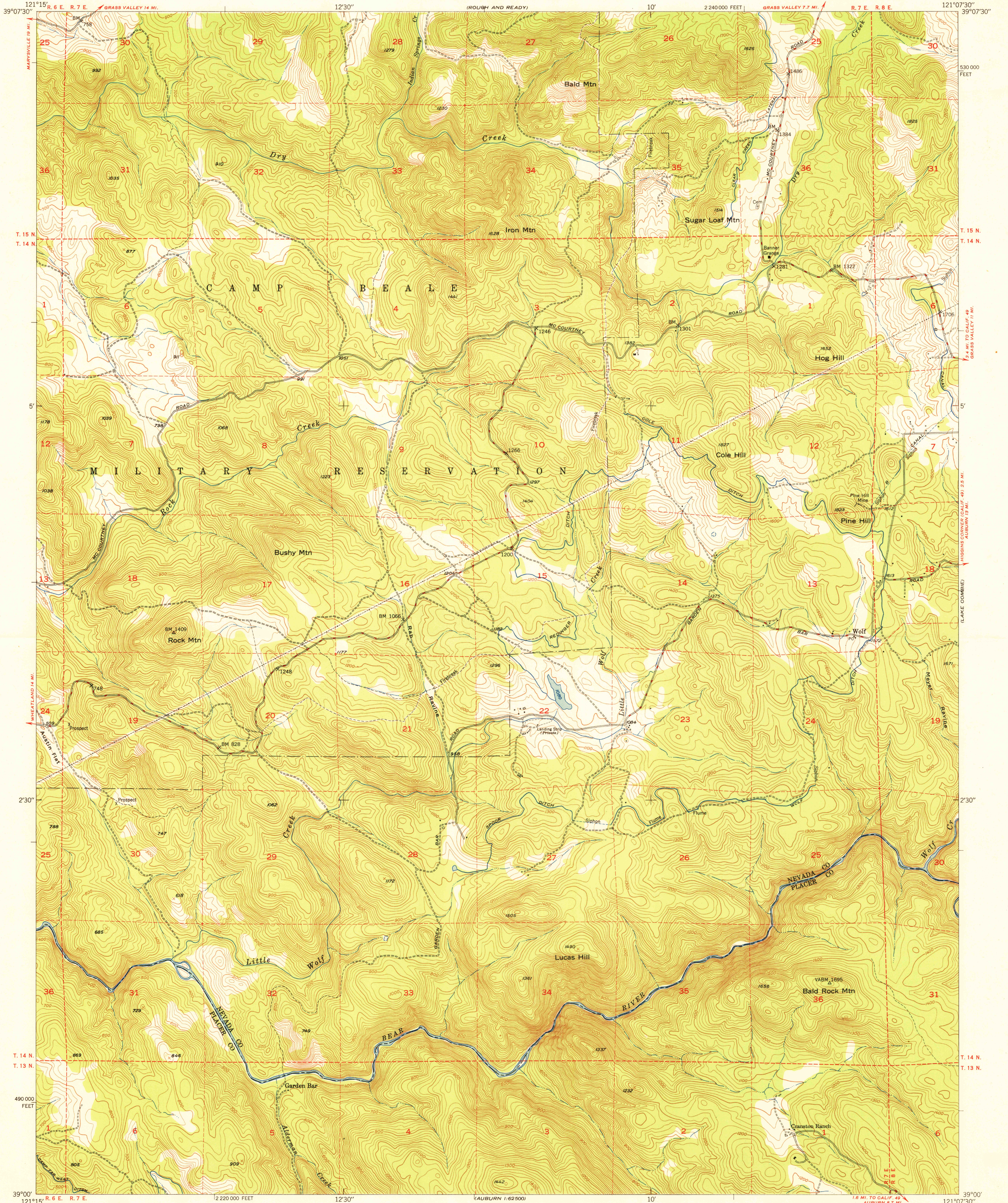


UNITED STATES
DEPARTMENT OF THE INTERIOR
GEOLOGICAL SURVEY

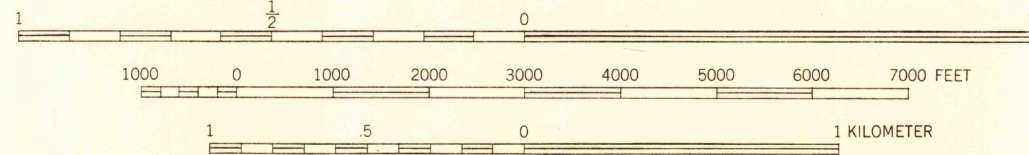
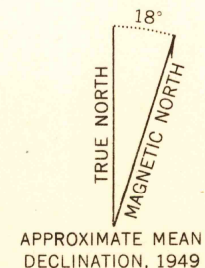
U. S. G. S.
FILE COPY
Inspection and Editing.

STATE OF CALIFORNIA
EARL WARREN, GOVERNOR
C. H. PURCELL, DIRECTOR OF PUBLIC WORKS
A. D. EDMONSTON, STATE ENGINEER

WOLF QUADRANGLE
CALIFORNIA
7.5 MINUTE SERIES (TOPOGRAPHIC)



Mapped, edited, and published by the Geological Survey
Control by USGS and USC&GS
Topography from aerial photographs by multiplex methods
Aerial photographs taken 1947. Field check 1949
Polyconic projection. 1927 North American datum
10,000-foot grids based on California coordinate system,
zone 2
Dashed land lines indicate approximate location



CONTOUR INTERVAL 20 FEET
DATUM IS MEAN SEA LEVEL

THIS MAP COMPLIES WITH NATIONAL MAP ACCURACY STANDARDS
FOR SALE BY U. S. GEOLOGICAL SURVEY, FEDERAL CENTER, DENVER, COLORADO OR WASHINGTON 25, D. C.
A FOLDER DESCRIBING TOPOGRAPHIC MAPS AND SYMBOLS IS AVAILABLE ON REQUEST

ROAD CLASSIFICATION
HARD-SURFACE ALL WEATHER ROADS DRY WEATHER ROADS
Heavy-duty 1 LANE 1 LANE Improved dirt
Medium-duty 1 LANE 1 LANE Unimproved dirt
Loose-surface, graded, or narrow hard-surface
U. S. Route State Route

USGS
Historical File
Topographic Division

U. S. G. S.
FILE COPY
Inspection and Editing.

WOLF, CALIF.
N3900-W12107.5/7.5
EDITION OF 1950

SEP 8 1950 2075