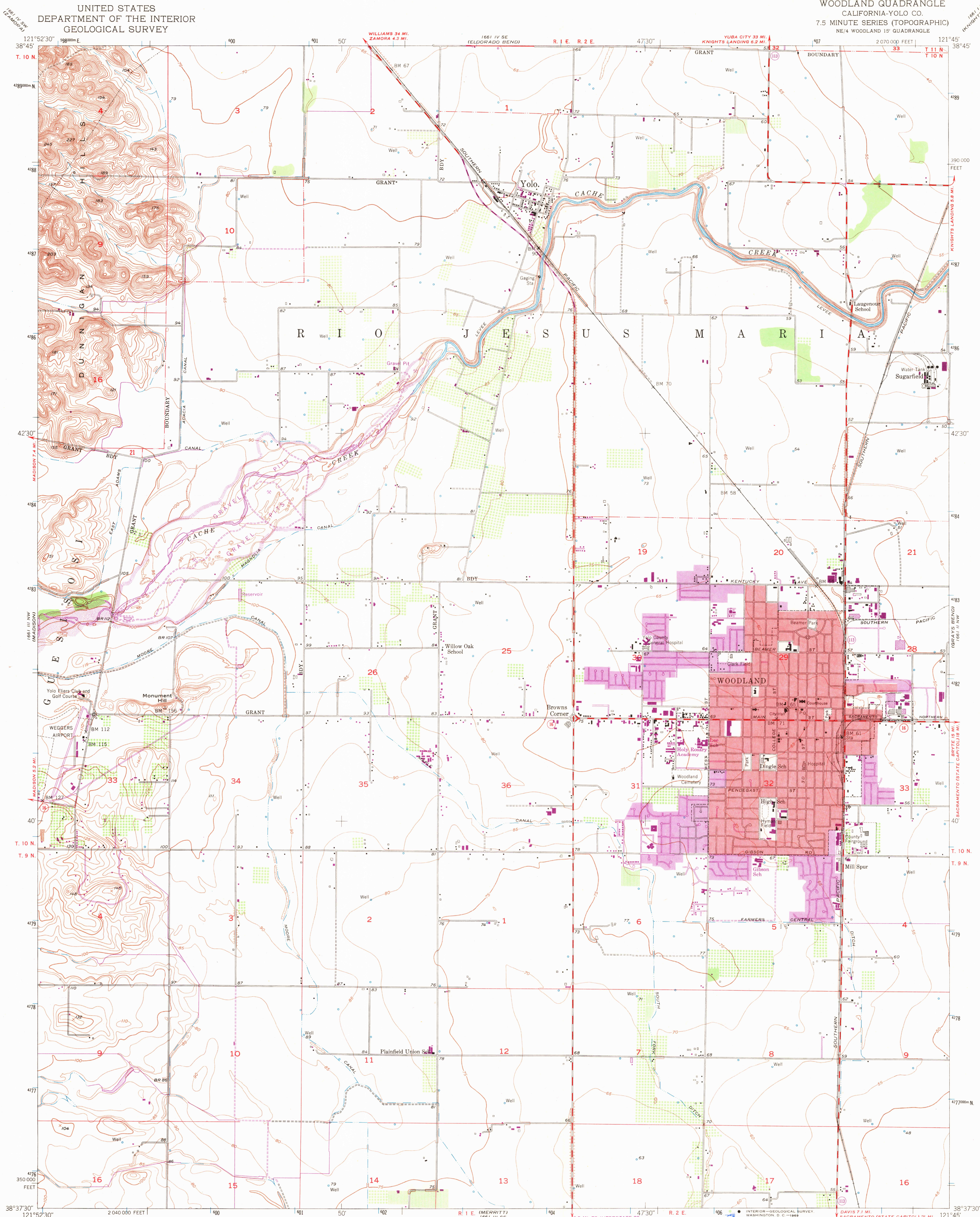
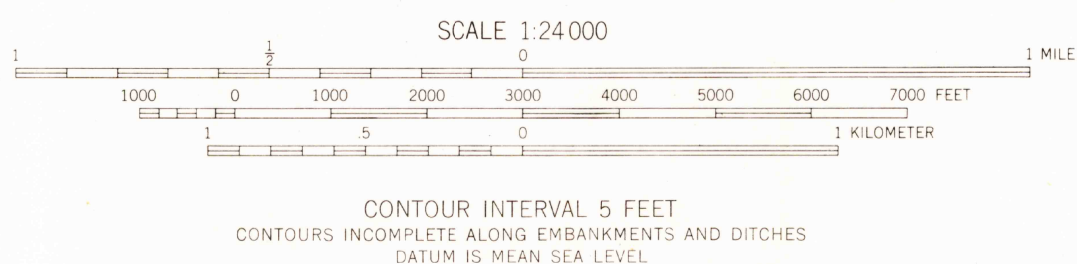
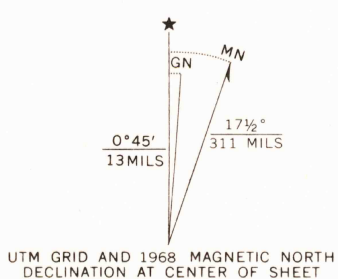


UNITED STATES
DEPARTMENT OF THE INTERIOR
GEOLOGICAL SURVEY

WOODLAND QUADRANGLE
CALIFORNIA-YOLO CO.
7.5 MINUTE SERIES (TOPOGRAPHIC)
NE/4 WOODLAND 15' QUADRANGLE



Mapped, edited, and published by the Geological Survey
Control by USGS and USC&GS
Mapped 1905, remapped 1952
Culture and drainage by multiplex methods
from aerial photographs taken 1949
Topography by plane-table surveys 1952
Polyconic projection. 1927 North American datum
10,000-foot grid based on California coordinate system, zone 2
Red tint indicates area in which only landmark buildings are shown
Dashed land lines indicate approximate locations
1000-meter Universal Transverse Mercator grid ticks,
zone 10, shown in blue



USGS
Historical File
Topographic Division

ROAD CLASSIFICATION

U.S.G.S.

FILE COPY
TOPOGRAPHIC DIVISION

WOODLAND, CALIF.
NE/4 WOODLAND 15' QUADRANGLE
N3837.5-W12145/7.5

1952
PHOTOGRAPHED 1968
AMS 1661 III NE-SERIES V895

THIS MAP COMPLIES WITH NATIONAL MAP ACCURACY STANDARDS
FOR SALE BY U. S. GEOLOGICAL SURVEY, DENVER, COLORADO 80225, OR WASHINGTON, D. C. 20242
A FOLDER DESCRIBING TOPOGRAPHIC MAPS AND SYMBOLS IS AVAILABLE ON REQUEST

Revisions shown in purple compiled from aerial photographs
taken 1968. This information not field checked
Purple tint indicates extension of urban areas

DEC 24 1968