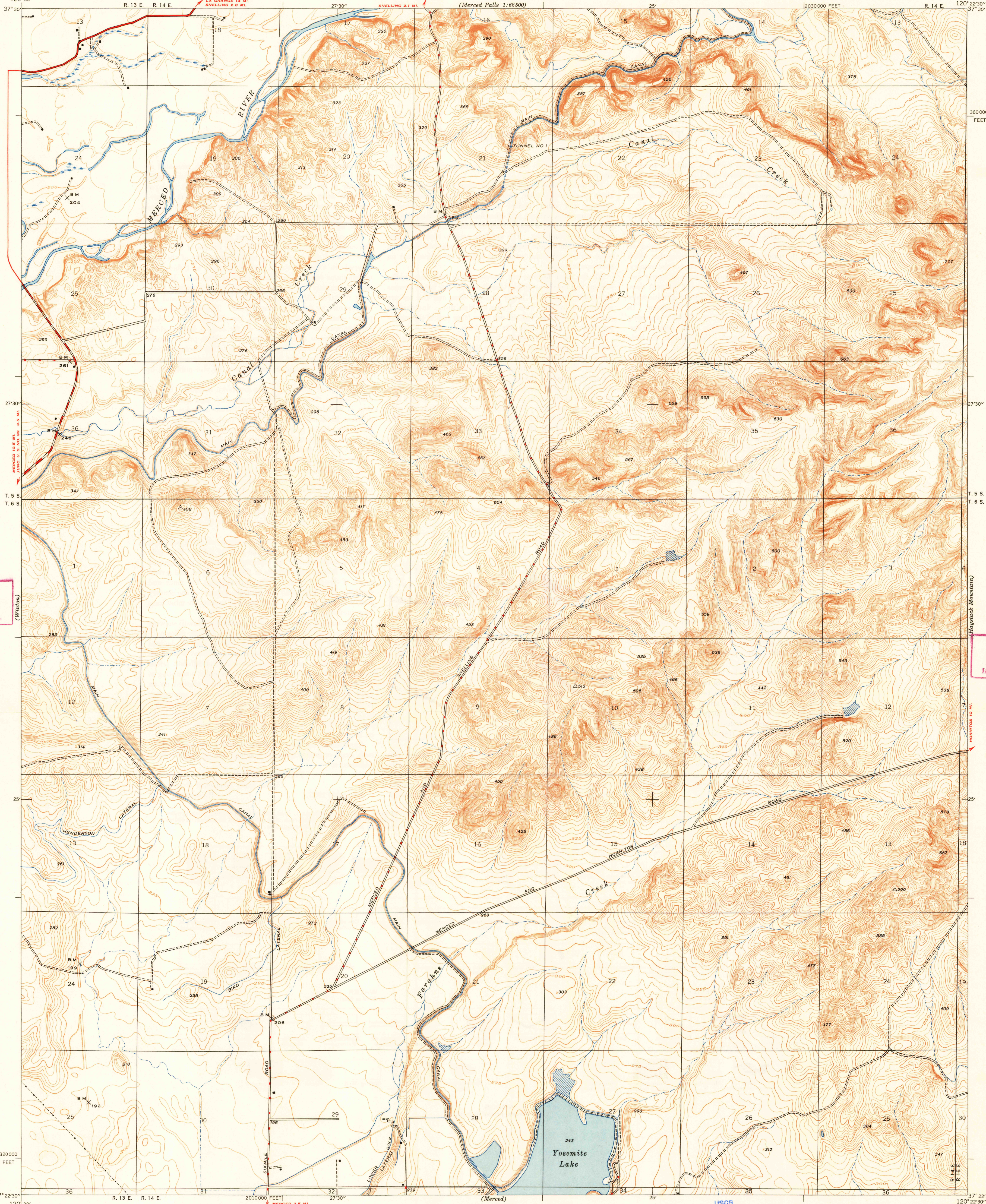


U. S. G. S.
FILE COPY
Inspection and Editing.

(Merced Falls)
1:62,500



U. S. G. S.
FILE COPY
Inspection and Editing.

U. S. G. S.
FILE COPY
Inspection and Editing.

Mapped by the Geological Survey
1914
Culture revised in 1946

ROAD CLASSIFICATION
1947
Dependable hard-surface road
Heavy-duty road
Secondary hard-surface road
All-weather road
Dirt road
More than two lanes indicated along road with tick at point of change
U. S. Route (1)
State Route (2)

TRUE NORTH
MAGNETIC NORTH
APPROXIMATE MEAN
DECLINATION, 1946

SCALE 1:24,000
1000 0 1000 2000 3000 4000 5000 6000 7000 FEET
1 5 0 1 KILOMETER
Contour interval 5 feet
Datum is mean sea level

USGS
Historical File
Topographic Division

Polyconic projection. 1927 North American datum
10000 foot grid based on California (3)
rectangular coordinate system.

U. S. G. S.
FILE COPY
Inspection and Editing.

YOSEMITE LAKE, CALIF.
Edition of 1948

N 3722.5-W 12022.5/7.5

NAME CHANGED FROM HOPEYON (1:31680) MAY 11 1948

3185