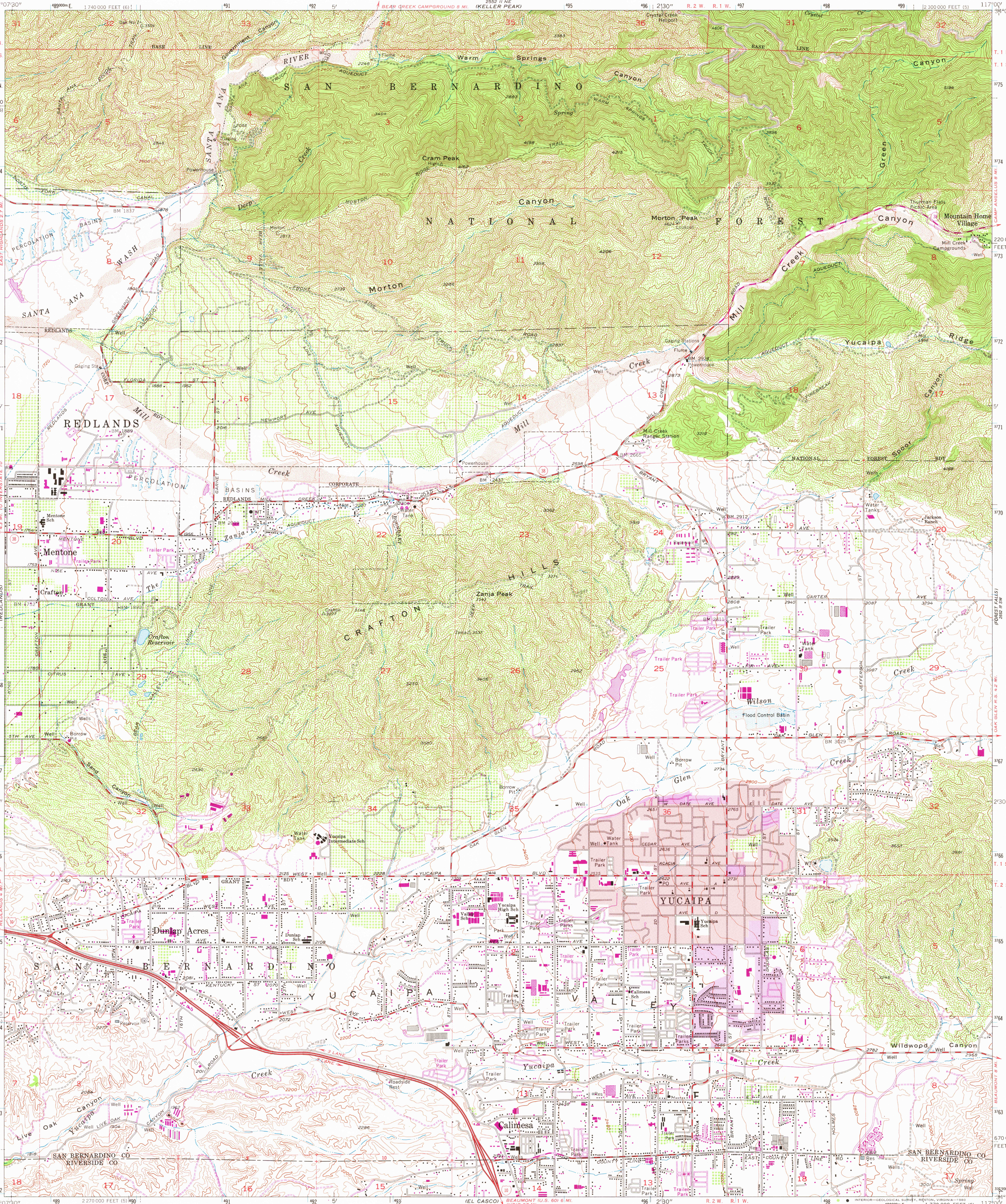




UNITED STATES
DEPARTMENT OF THE INTERIOR
GEOLOGICAL SURVEY

STATE OF CALIFORNIA
DEPARTMENT OF WATER RESOURCES

YUCAIPA QUADRANGLE
CALIFORNIA
7.5 MINUTE SERIES (TOPOGRAPHIC)
SE/4 REDLANDS 15' QUADRANGLE



Mapped, edited, and published by the Geological Survey
Control by USGS, USC&GS, and USCE
Topography by photogrammetric methods from aerial photographs
taken 1952 and planetable surveys 1939. Field checked 1954
Revised from aerial photographs taken 1966. Field checked 1967
Polyconic projection
10,000-foot grids based on California coordinate system, zones 5 and 6
1000-meter Universal Transverse Mercator grid ticks
zone 11, shown in blue 1927 North American Datum
To place on the predicted North American Datum 1983
move the projection lines 1 meter north and
82 meters east as shown by dashed corner ticks
Red tint indicates areas in which only landmark buildings are shown
Where omitted, land lines have not been established

There may be private inholdings within the boundaries
of the National or State reservations shown on this map
Revisions shown in purple and woodland compiled from
aerial photographs taken 1978 and other source data
This information not field checked. Map edited 1980

THIS MAP COMPLIES WITH NATIONAL MAP ACCURACY STANDARDS
FOR SALE BY U.S. GEOLOGICAL SURVEY, DENVER, COLORADO 80225, OR RESTON, VIRGINIA 22092
A FOLDER DESCRIBING TOPOGRAPHIC MAPS AND SYMBOLS IS AVAILABLE ON REQUEST

ROAD CLASSIFICATION
Heavy-duty ——— Light-duty ———
Medium-duty ——— Unimproved dirt ———
Interstate Route ——— State Route ———
YUCAIPA, CALIF.
SE/4 REDLANDS 15' QUADRANGLE
N3400—W11700/7.5
1967
PHOTOREVISED 1980
DMA 2552 II SE—SERIES V895

DEC 22 1980
3657