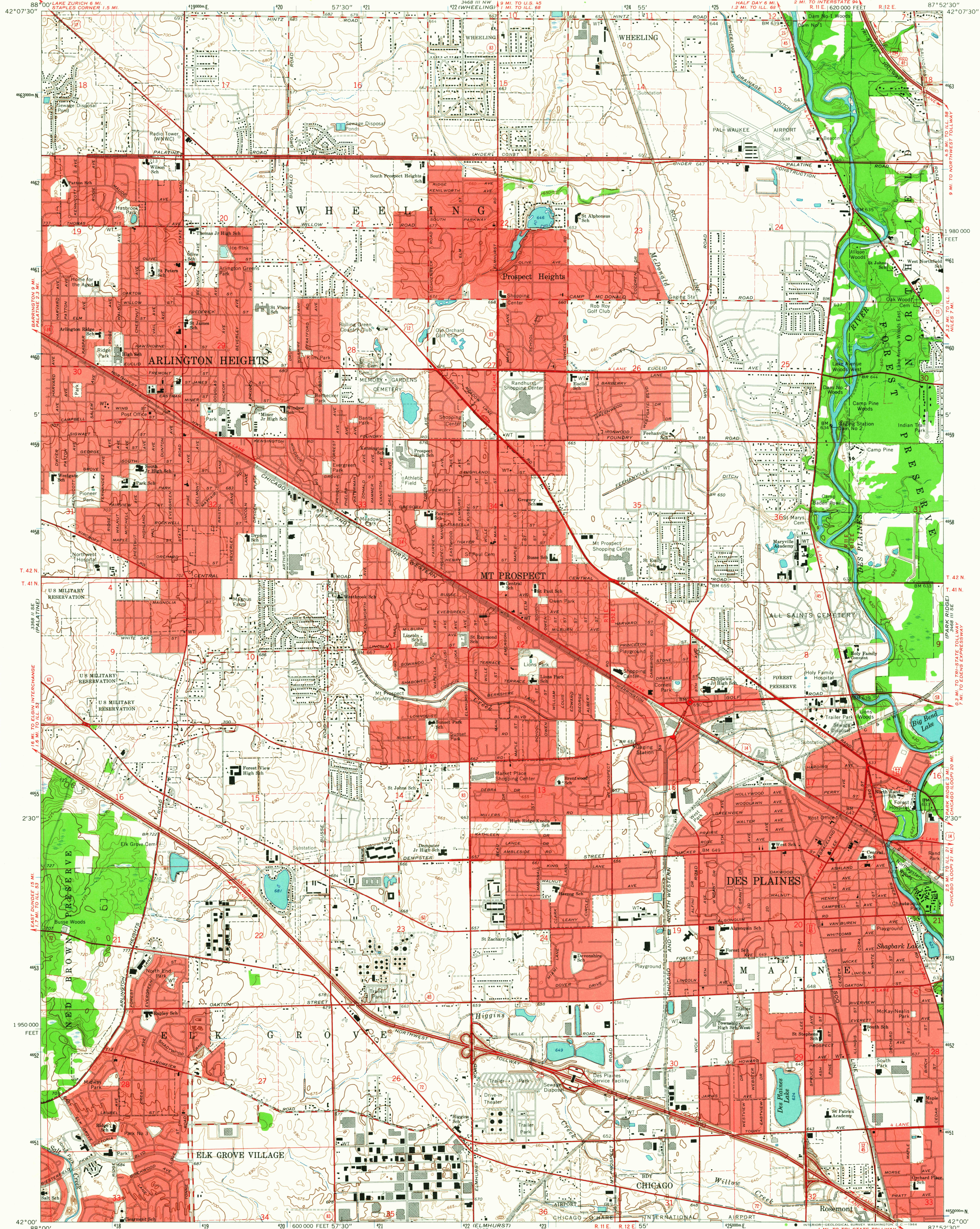
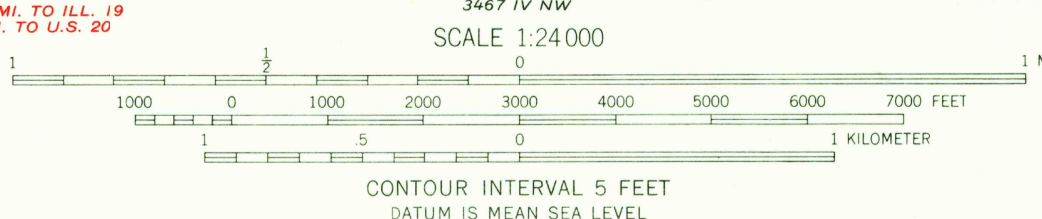


UNITED STATES
DEPARTMENT OF THE INTERIOR
GEOLOGICAL SURVEY

ARLINGTON HEIGHTS QUADRANGLE
ILLINOIS—COOK CO.
7.5 MINUTE SERIES (TOPOGRAPHIC)



Maped, edited, and published by the Geological Survey
in cooperation with State of Illinois Geological Survey
Control by USGS, USGS&S, and Cook County Highway Department
Planimetry by photogrammetric methods from aerial photographs
taken 1962-63. Topography by planimetric surveys 1925
Revised 1963
Polyconic projection. 1927 North American datum
10,000-foot grid based on Illinois coordinate system, east zone
1000-meter Universal Transverse Mercator grid ticks,
zone 16, shown in blue
Red tint indicates areas in which only landmark buildings are shown
Fine red dashed lines indicate selected fence and field lines where
generally visible on aerial photographs. This information is unchecked



USGS
Historical File
Topographic Division

ROAD CLASSIFICATION
Heavy-duty ——— Light-duty ———
Medium-duty ——— Unimproved dirt ———
Interstate Route ——— U.S. Route ——— State Route ———



ARLINGTON HEIGHTS, ILL.
N4200—W8752.5/7.5

1963

AMS 3468 III SW—SERIES Y863

U.S.G.S.

FILE COPY
TOPOGRAPHIC DIVISION

DEC 1 6 1964

3530