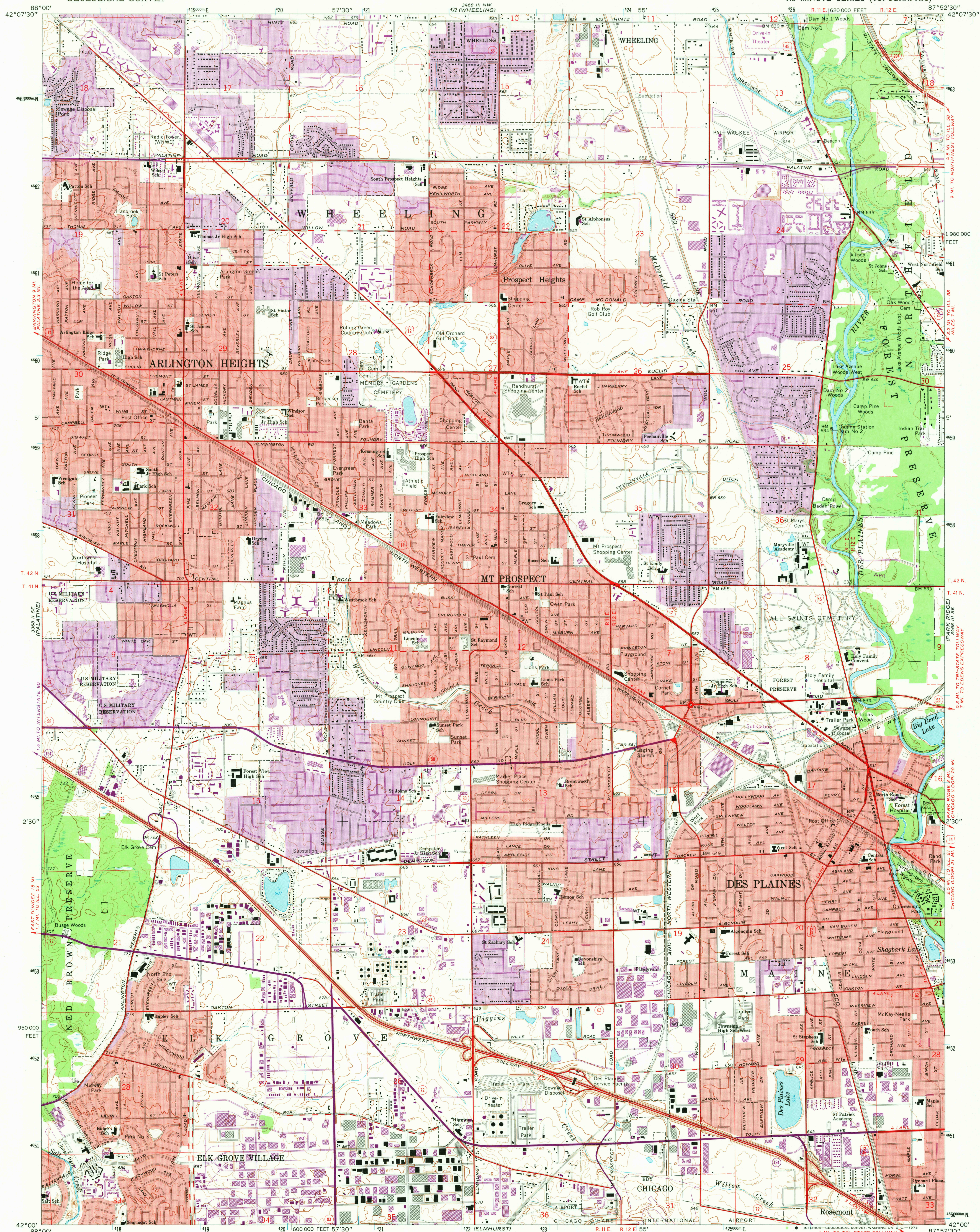
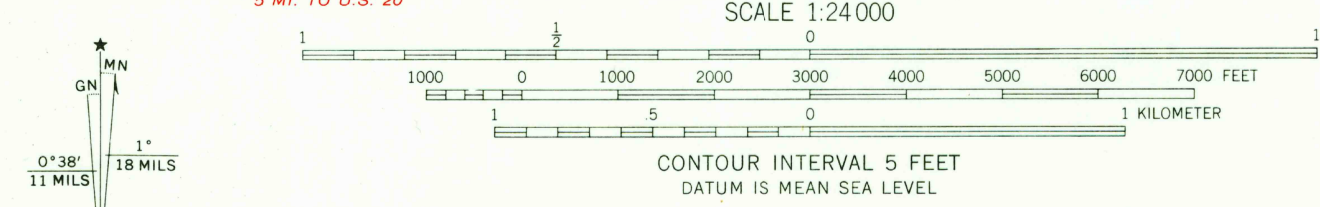


UNITED STATES
DEPARTMENT OF THE INTERIOR
GEOLOGICAL SURVEY

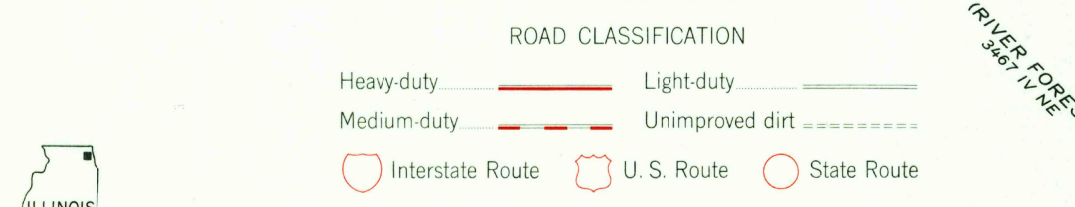
ARLINGTON HEIGHTS QUADRANGLE
ILLINOIS-COOK CO.
7.5 MINUTE SERIES (TOPOGRAPHIC)



Mapped, edited, and published by the Geological Survey
in cooperation with State of Illinois Geological Survey
Control by USGS, USC&GS, and Cook County Highway Department
Planimetry by photogrammetric methods from aerial photographs
taken 1962-63. Topography by planetable surveys 1925
Revised 1963
Polyconic projection. 1927 North American datum
10,000-foot grid based on Illinois coordinate system, east zone
1000-meter Universal Transverse Mercator grid ticks,
zone 16, shown in blue
Red tint indicates areas in which only landmark buildings are shown
Fine red dashed lines indicate selected fence and field lines where
generally visible on aerial photographs. This information is unchecked



THIS MAP COMPLIES WITH NATIONAL MAP ACCURACY STANDARDS
FOR SALE BY U. S. GEOLOGICAL SURVEY, WASHINGTON, D. C. 20242
AND BY THE STATE GEOLOGICAL SURVEY, URBANA, ILLINOIS 61801
A FOLDER DESCRIBING TOPOGRAPHIC MAPS AND SYMBOLS IS AVAILABLE ON REQUEST



ARLINGTON HEIGHTS, ILL.
N4200-W8752.5/7.5

1963
PHOTOGRAPHED 1972
AMS 3468 III SW-SERIES V863

3690