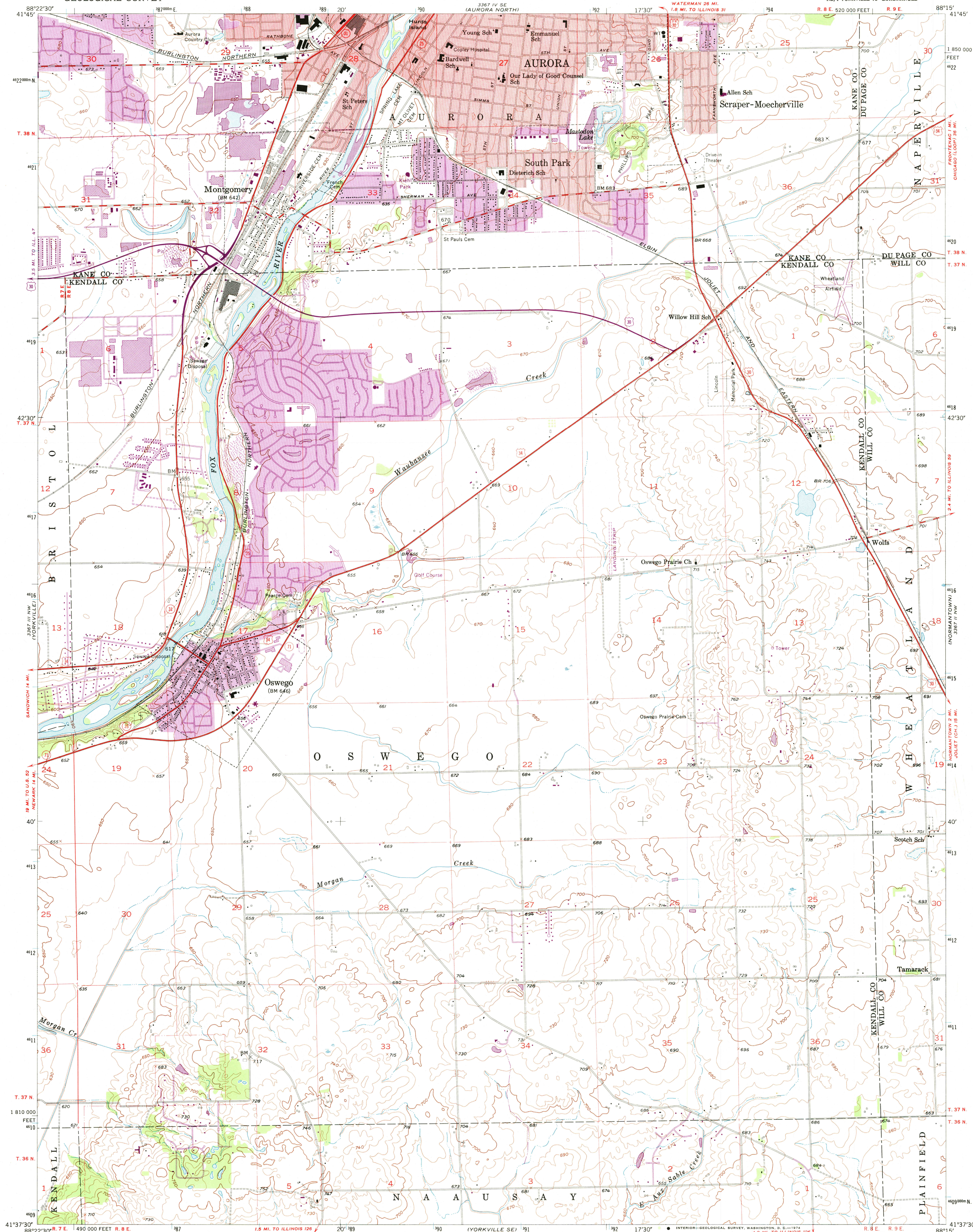


UNITED STATES  
DEPARTMENT OF THE INTERIOR  
GEOLOGICAL SURVEY

AURORA SOUTH QUADRANGLE  
ILLINOIS  
7.5 MINUTE SERIES (TOPOGRAPHIC)  
NE 1/4 YORKVILLE 15' QUADRANGLE



Mapped, edited, and published by the Geological Survey  
Control by USGS and USC&GS

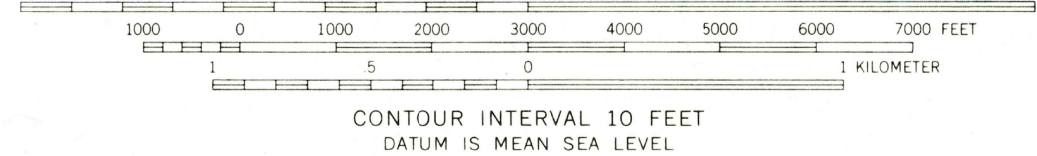
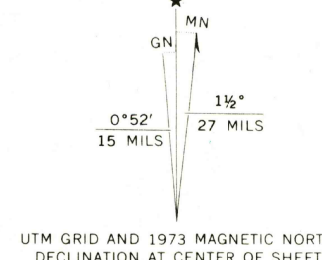
Topography by Kelsh plotter from aerial photographs  
taken 1952 and by planetable surveys 1954

Polyconic projection. 1927 North American datum  
10,000-foot grid based on Illinois coordinate system, east zone  
1000-meter Universal Transverse Mercator grid ticks,  
zone 16, shown in blue

Red tint indicates areas in which only landmark buildings are shown

Revisions shown in purple compiled from aerial photographs  
taken 1973. This information not field checked

Purple tint indicates extension of urban areas



THIS MAP COMPLIES WITH NATIONAL MAP ACCURACY STANDARDS  
FOR SALE BY U.S. GEOLOGICAL SURVEY, WASHINGTON, D.C. 20242  
AND BY THE STATE GEOLOGICAL SURVEY, URBANA, ILLINOIS 61801  
A FOLDER DESCRIBING TOPOGRAPHIC MAPS AND SYMBOLS IS AVAILABLE ON REQUEST

USGS  
Historical File  
Topographic Division

AURORA SOUTH, ILL.  
NE 1/4 YORKVILLE 15' QUADRANGLE  
N4137.5-W8815.7.5

1954  
PHOTOREVISED 1973  
AMS 3367 III NE-SERIES V863

MAY 0 2 1974

3800