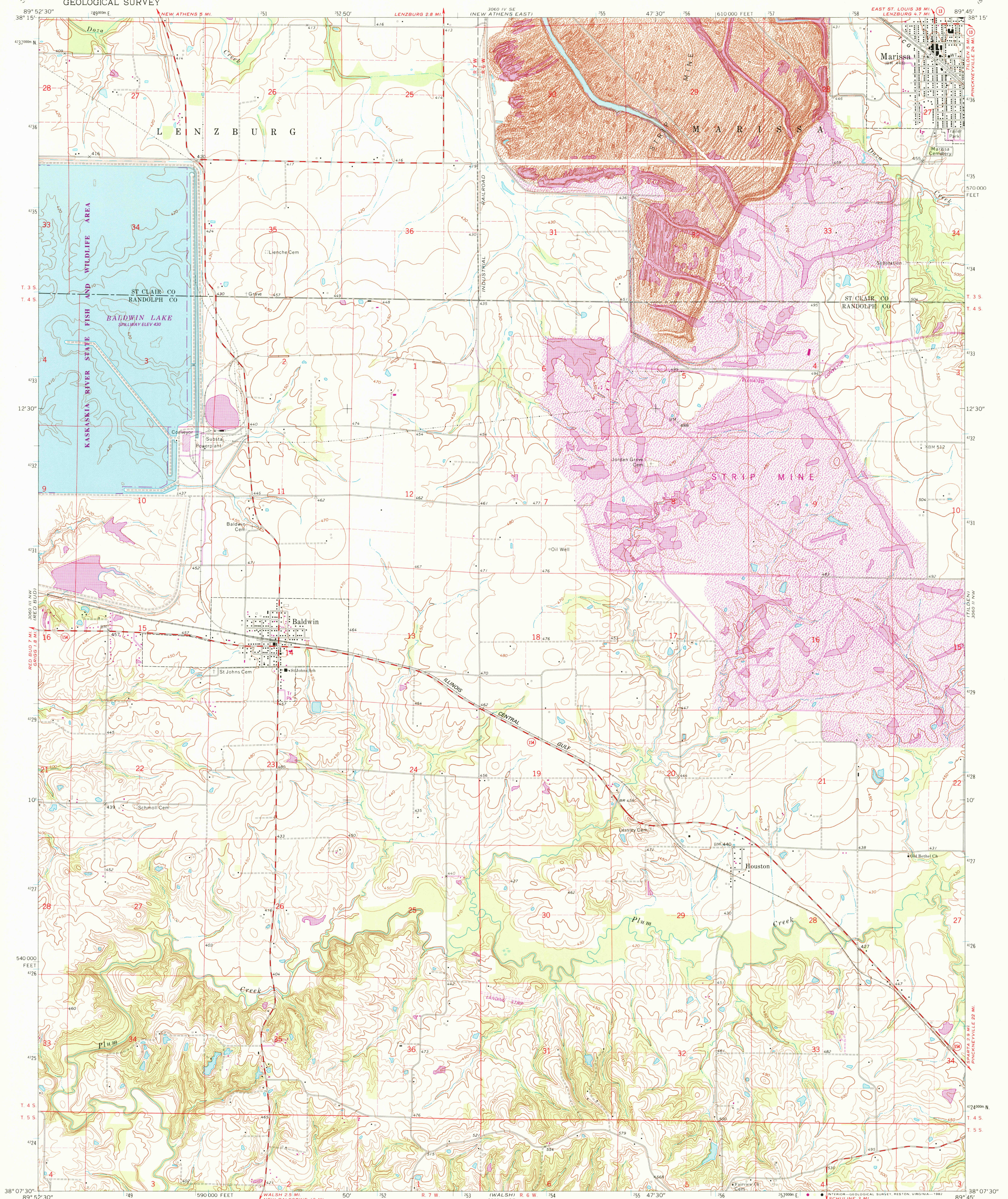


UNITED STATES
DEPARTMENT OF THE INTERIOR
GEOLOGICAL SURVEY

BALDWIN QUADRANGLE
ILLINOIS
7.5 MINUTE SERIES (TOPOGRAPHIC)



Mapped, edited, and published by the Geological Survey

Control by USGS and USC&GS

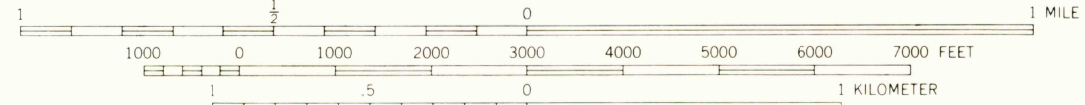
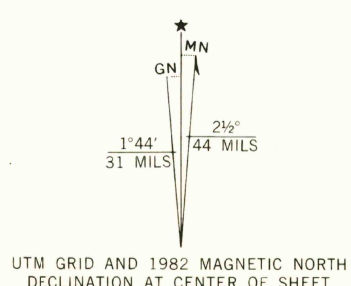
Topography by photogrammetric methods from aerial photographs taken 1968. Field checked 1970

Polyconic projection. 1927 North American datum
10,000-foot grid based on Illinois coordinate system, west zone
1000-meter Universal Transverse Mercator grid ticks,
zone 16, shown in blue

To place on the predicted North American Datum 1983
move the projection lines 2 meters south and
8 meters east as shown by dashed corner ticks

There may be private inholdings within the boundaries of
the National or State reservations shown on this map

Revisions shown in purple compiled from aerial photographs taken 1980
and other sources. This information not field checked. Map edited 1982



CONTOUR INTERVAL 10 FEET
NATIONAL GEODETIC VERTICAL DATUM OF 1929

THIS MAP COMPLIES WITH NATIONAL MAP ACCURACY STANDARDS
FOR SALE BY U. S. GEOLOGICAL SURVEY, RESTON, VIRGINIA 22092
AND BY THE STATE GEOLOGICAL SURVEY, CHAMPAIGN, ILLINOIS 61820
A FOLDER DESCRIBING TOPOGRAPHIC MAPS AND SYMBOLS IS AVAILABLE ON REQUEST



ROAD CLASSIFICATION
Secondary highway, all weather, Light-duty road, all weather,
hard surface improved surface
Unimproved road, fair or dry
weather
State Route

BALDWIN, ILL.
N 3807.5-W 8945/7.5

1970
PHOTOREVISED 1982
DMA 3060 III NE-SERIES V683

SEP 20 1982