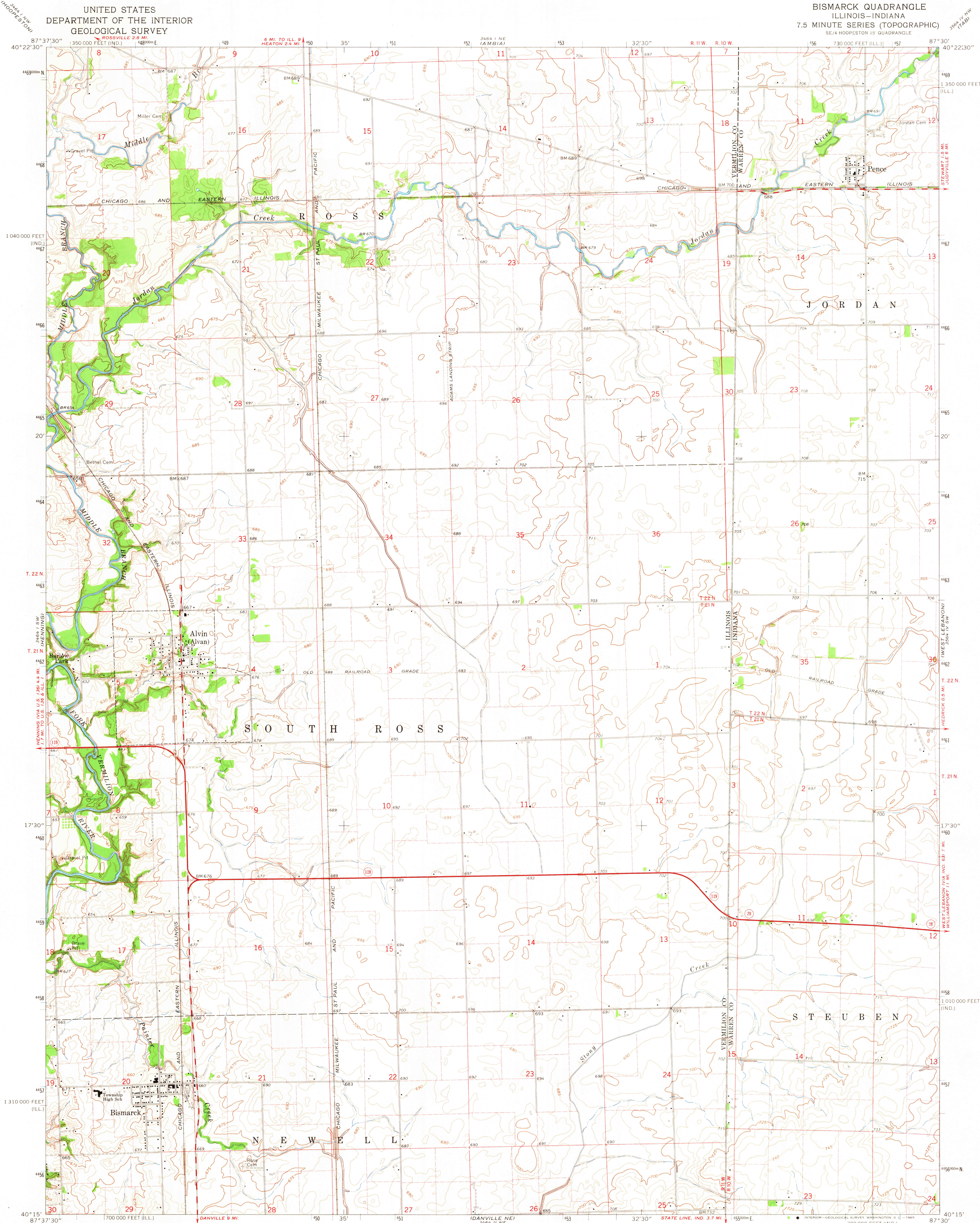


UNITED STATES  
DEPARTMENT OF THE INTERIOR  
GEOLOGICAL SURVEY

BISMARCK QUADRANGLE  
ILLINOIS-INDIANA  
7.5 MINUTE SERIES (TOPOGRAPHIC)  
SE 1/4 HOOPERSTON 15 QUADRANGLE



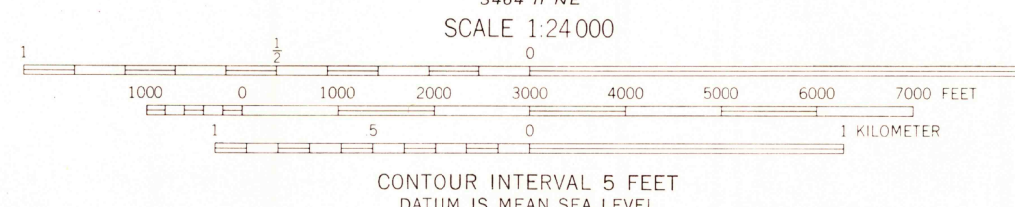
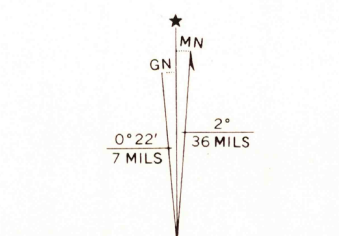
Mapped, edited, and published by the Geological Survey

Control by USGS and USC&GS

Topography by photogrammetric methods from aerial photographs taken 1963 and planetable surveys 1964

Polyconic projection. 1927 North American datum 10,000-foot grids based on Illinois coordinate system, east zone and Indiana coordinate system, west zone 1000-meter Universal Transverse Mercator grid ticks, zone 16, shown in blue

Fine red dashed lines indicate selected fence and field lines where generally visible on aerial photographs. This information is unchecked



USGS  
Historical File  
Topographic Division



ROAD CLASSIFICATION	
Heavy-duty	Light-duty
Medium-duty	Unimproved dirt
State Route	

THIS MAP COMPLIES WITH NATIONAL MAP ACCURACY STANDARDS  
FOR SALE BY U.S. GEOLOGICAL SURVEY, WASHINGTON, D. C. 20242,  
STATE GEOLOGICAL SURVEY, URBANA, ILLINOIS,  
AND INDIANA DEPARTMENT OF CONSERVATION, INDIANAPOLIS, INDIANA  
A FOLDER DESCRIBING TOPOGRAPHIC MAPS AND SYMBOLS IS AVAILABLE ON REQUEST

BISMARCK, ILL.-IND.  
SE 1/4 HOOPERSTON 15 QUADRANGLE  
N4015-W8730/7.5

1964  
AMS 3464 I SE-SERIES V863

U.S.G.S.  
FILE COPY  
TOPOGRAPHIC DIVISION

SEP 14 1965