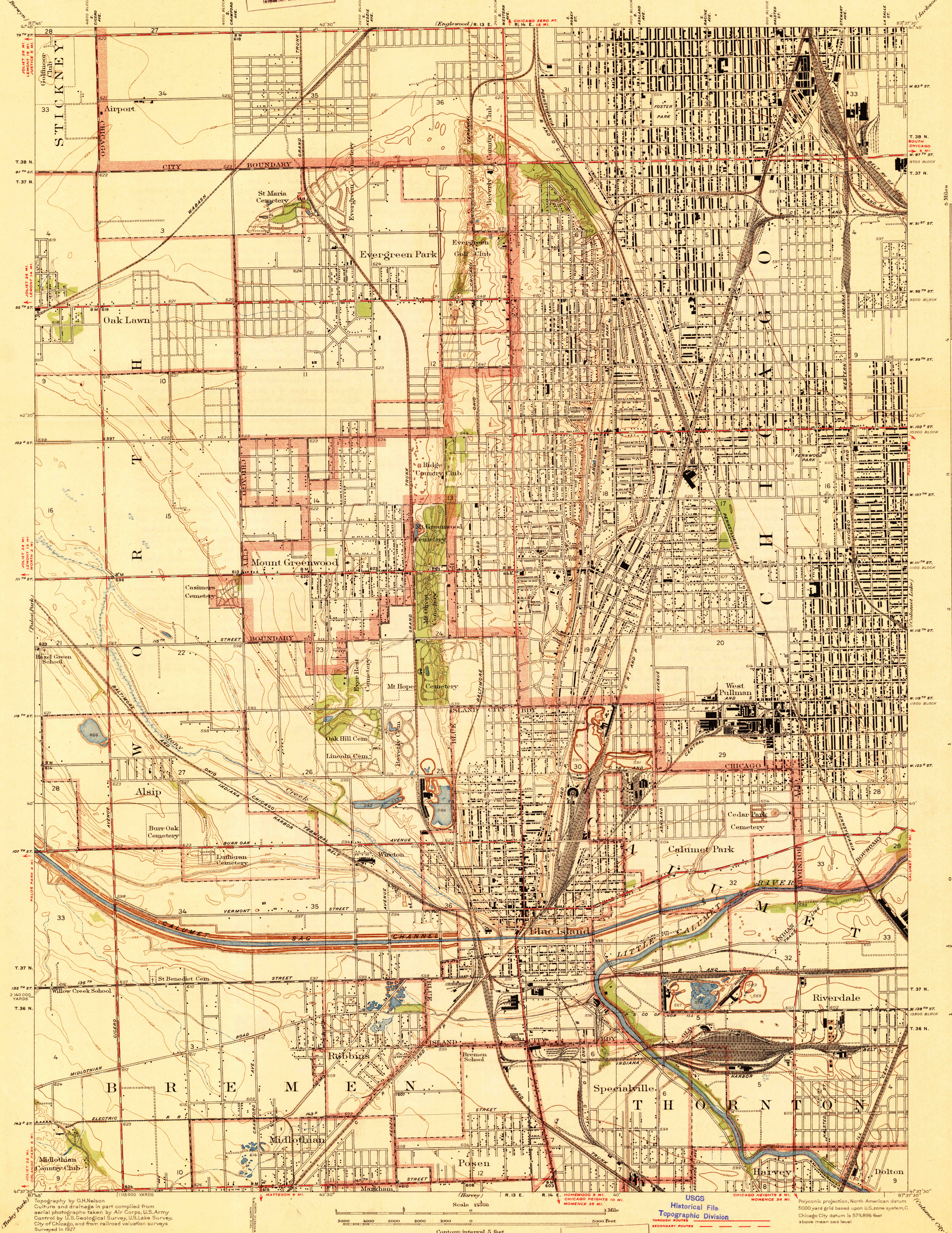


U.S.G.S.
FILE COPY
Inspection and Editing.



Topography by D.H. Nelson
Culture and drainage in part compiled from
aerial photographs taken by Air Corps, U.S. Army
Control by U.S. Geological Survey, U.S. Lake Survey,
City of Chicago, and from railroad valuation surveys
Surveyed in 1927

APPROXIMATE MEAN
DECLINATION, 1927

Scale 35000
Contour interval 5 feet
Datum is mean sea level

U.S.G.S.
FILE COPY
Inspection and Editing.

USGS
Historical File
Topographic Division
THROUGH ROUTE
SECONDARY ROUTES

AUG 28 1929 (2515)

BLUE ISLAND, ILL.
Edition of 1929
2635-0655/79;

5 Miles