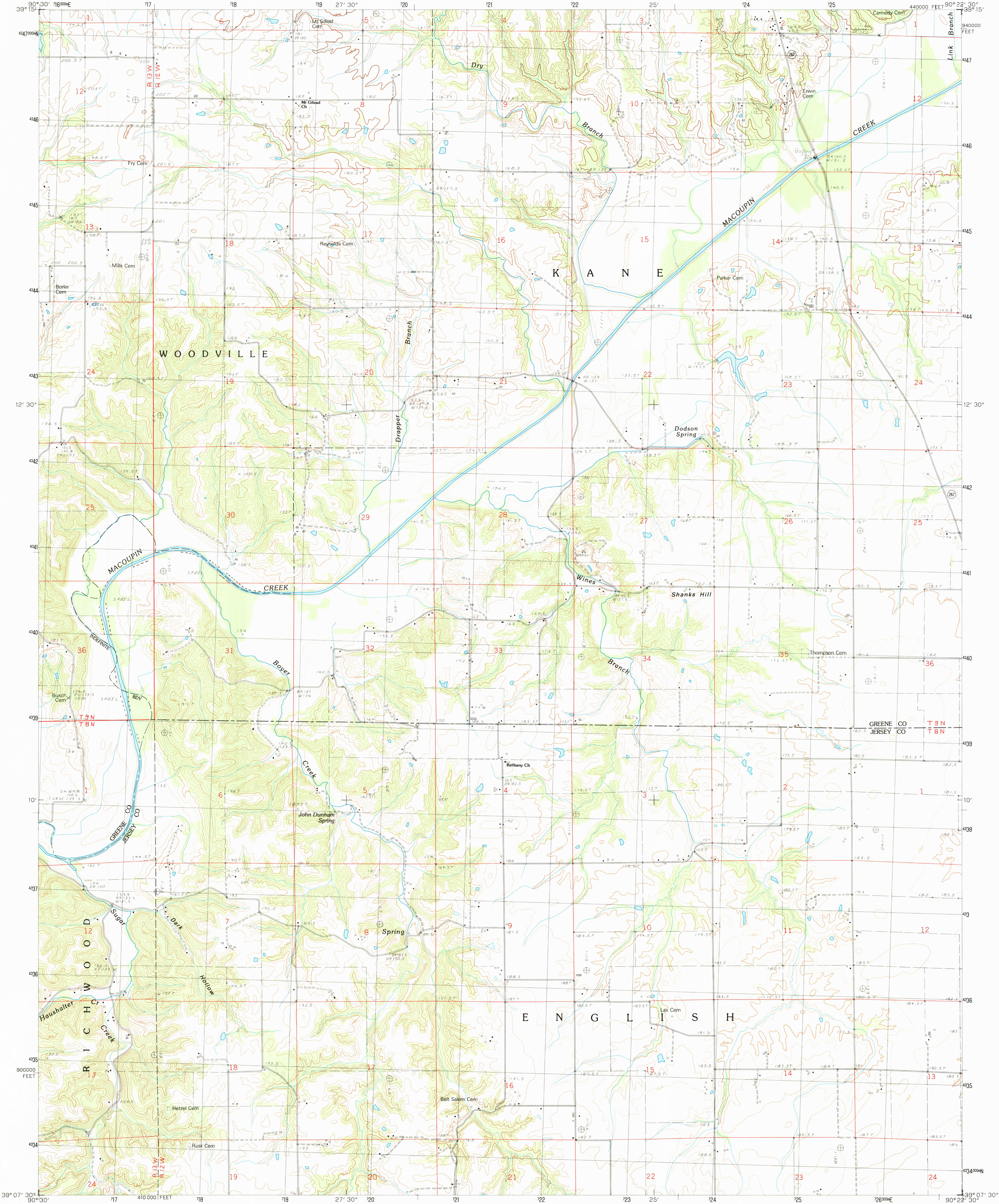


UNITED STATES
DEPARTMENT OF THE INTERIOR
GEOLOGICAL SURVEY

BOYER CREEK QUADRANGLE
ILLINOIS
7.5 MINUTE SERIES (TOPOGRAPHIC)



PRODUCED BY THE UNITED STATES GEOLOGICAL SURVEY
CONTROL BY USGS AND NOS/NOAA
FIELD CHECKED 1978
PROJECTION 1983
GRID: 1000-METER UNIVERSAL TRANSVERSE MERCATOR
UTM GRID DECLINATION 1977 EAST
1983 MAGNETIC NORTH DECLINATION 290° EAST
VERTICAL DATUM NATIONAL GEODETIC VERTICAL DATUM OF 1929
HORIZONTAL DATUM 1927 NORTH AMERICAN DATUM
To place on the predicted North American Datum of 1983,
move the projection lines as shown by dashed corner ticks
(1 meter south and 9 meters east)
There may be private inholdings within the boundaries of any
Federal and State reservations shown on this map

PROVISIONAL MAP
Produced from original
manuscript drawings. Infor-
mation shown as of date of
field check.

SCALE 1:24 000
KILOMETERS
METERS
MILES
FOOT
CONTOUR INTERVAL 6 METERS
SUPPLEMENTARY CONTOUR INTERVAL 3 METERS
CONTROL ELEVATIONS SHOWN TO THE NEAREST 0.1 METER
OTHER ELEVATIONS SHOWN TO THE NEAREST 0.5 METER
To convert meters to feet multiply by 3.2808
To convert feet to meters multiply by .3048
THIS MAP COMPLIES WITH NATIONAL MAP ACCURACY STANDARDS
FOR SALE BY U. S. GEOLOGICAL SURVEY, RESTON, VIRGINIA 22092
AND THE STATE GEOLOGICAL SURVEY, CHAMPAIGN, ILLINOIS 61820

1	2	3	1	Kampville
2	3	4	2	Carrollton
3	4	5	3	Daum
4	5	6	4	Hardin
5	6	7	5	Jerseyville North
6	7	8	6	Nutwood
7	8	9	7	Otterville
8	9	10	8	Jerseyville South

ADJOINING 7.5 QUADRANGLE NAMES
CONTOURS AND ELEVATIONS
IN METERS

ROAD LEGEND
Improved Road
Unimproved Road
Trail
Interstate Route
U. S. Route
State Route

BOYER CREEK, ILLINOIS
PROVISIONAL EDITION 1983

39090-B4-TM-024