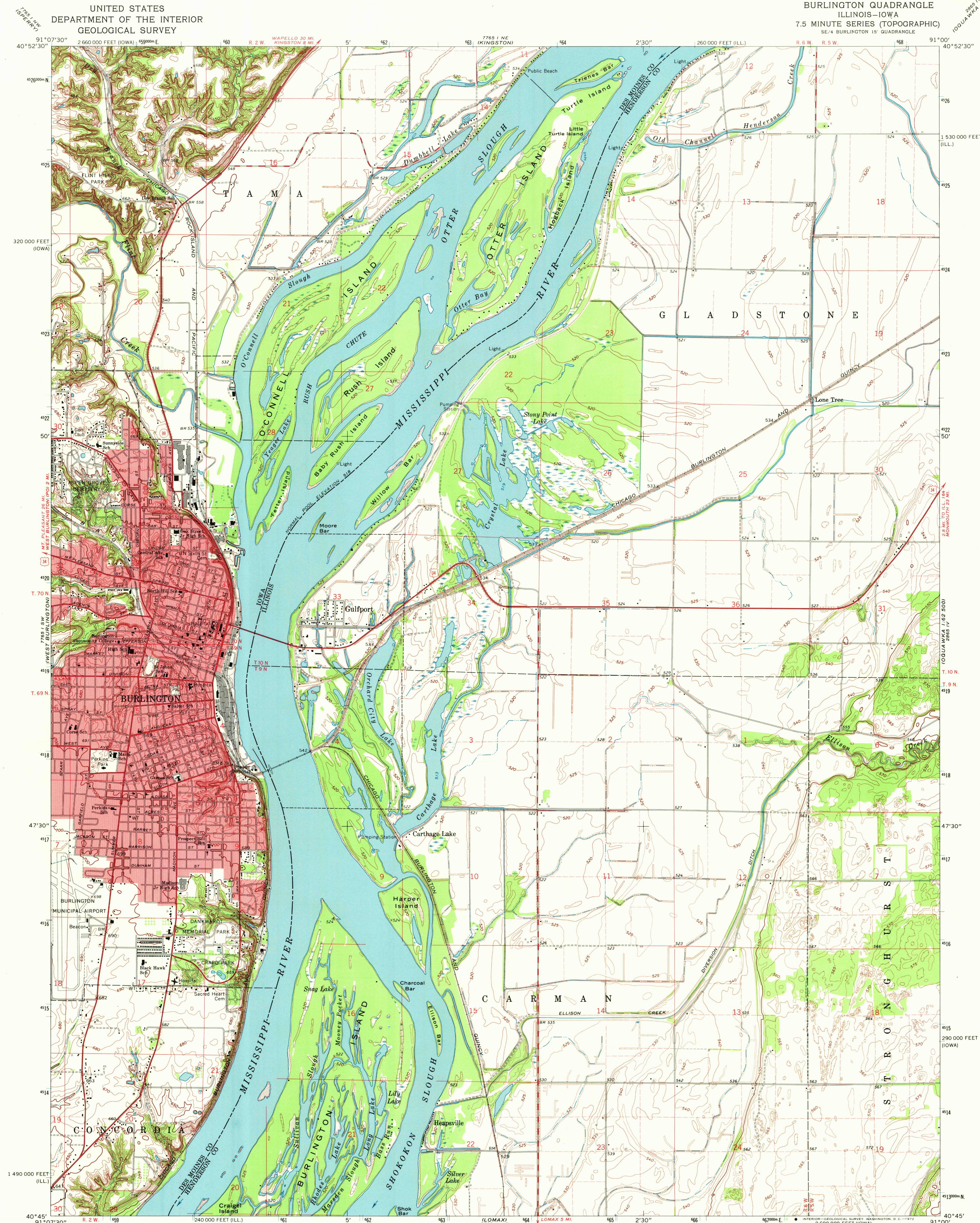


UNITED STATES  
DEPARTMENT OF THE INTERIOR  
GEOLOGICAL SURVEY

BURLINGTON QUADRANGLE  
ILLINOIS-IOWA  
7.5 MINUTE SERIES (TOPOGRAPHIC)  
SE/4 BURLINGTON 15' QUADRANGLE



Mapped, edited, and published by the Geological Survey  
Control by USGS and USC&GS  
Topography by photogrammetric methods from aerial  
photographs taken 1962 and planetable surveys 1964  
Polyconic projection. 1927 North American datum  
10,000-foot grids based on Illinois coordinate system, west zone, and  
Iowa coordinate system, south zone  
1000-meter Universal Transverse Mercator grid ticks,  
zone 15, shown in blue  
Red tint indicates area in which only landmark buildings are shown  
Fine red dashed lines indicate selected fence and field lines where  
generally visible on aerial photographs. This information is unchecked

UTM GRID AND 1984 MAGNETIC NORTH  
DECLINATION AT CENTER OF SHEET  
171° 23' 11" W  
5° 51' 11" N

SCALE 1:24,000  
1 1000 2000 3000 4000 5000 6000 7000 FEET  
1 1 2 3 4 5 6 7 8 9 10 KILOMETER  
CONTOUR INTERVAL 10 FEET  
DOTTED LINES REPRESENT 5-FOOT CONTOURS  
DATUM IS MEAN SEA LEVEL

THIS MAP COMPLIES WITH NATIONAL MAP ACCURACY STANDARDS  
FOR SALE BY U.S. GEOLOGICAL SURVEY, DENVER, COLORADO 80225 OR WASHINGTON, D.C. 20242,  
STATE GEOLOGICAL SURVEY, URBANA, ILLINOIS 61801  
AND IOWA GEOLOGICAL SURVEY, IOWA CITY, IOWA 52240,  
A FOLDER DESCRIBING TOPOGRAPHIC MAPS AND SYMBOLS IS AVAILABLE ON REQUEST



ROAD CLASSIFICATION  
Heavy-duty ——— Light-duty ———  
Medium-duty ——— Unimproved dirt ———  
U.S. Route ——— State Route ———

BURLINGTON, ILL.-IOWA  
SE/4 BURLINGTON 15' QUADRANGLE  
N4045-W9100/7.5  
1964  
AMS 7765 I SE-SERIES V876

FILE COPY  
APR 4 - 1972  
MAP INFORMATION OFFICE  
GEOLOGICAL SURVEY