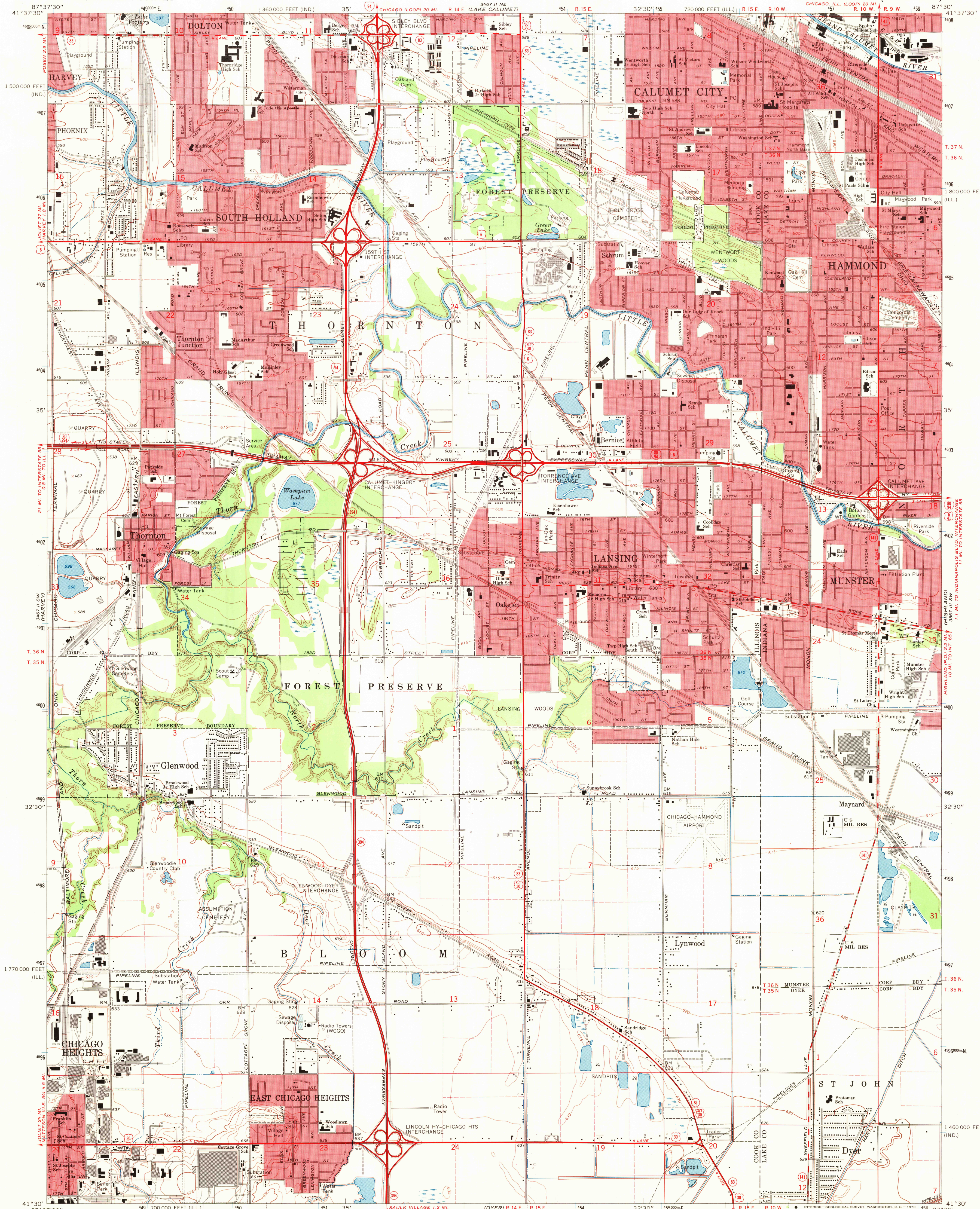
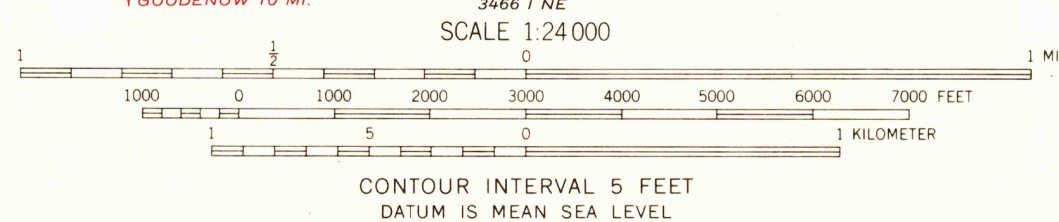


UNITED STATES
DEPARTMENT OF THE INTERIOR
GEOLOGICAL SURVEY

CALUMET CITY QUADRANGLE
ILLINOIS-INDIANA
7.5 MINUTE SERIES (TOPOGRAPHIC)



Mapped, edited, and published by the Geological Survey in cooperation with Illinois Dept. of Registration and Education, Geological Survey Division and Indiana Dept. of Natural Resources. Revised in cooperation with Indiana Dept. of Natural Resources. Control by USGS, USC&GS, and Cook County Highway Department. Topography by planetable surveys 1926. Revised from aerial photographs taken 1967. Field checked 1968. Polyconic projection. 1927 North American datum. 10,000-foot grids based on Illinois coordinate system, east zone, and Indiana coordinate system, west zone. 1000-meter Universal Transverse Mercator grid ticks, zone 16, shown in blue. Fine red dashed lines indicate selected fence and field lines where generally visible on aerial photographs. This information is unchecked. Red tint indicates areas in which only landmark buildings are shown.



USGS
Historical File
Topographic Division

ROAD CLASSIFICATION
Primary highway, all weather, hard surface
Secondary highway, all weather, hard surface
Light-duty road, all weather, improved surface
Unimproved road, fair or dry weather
Interstate Route
U.S. Route
State Route

THIS MAP COMPLIES WITH NATIONAL MAP ACCURACY STANDARDS
FOR SALE BY U.S. GEOLOGICAL SURVEY, WASHINGTON, D.C. 20242,
THE STATE GEOLOGICAL SURVEY, URBANA, ILLINOIS 61801,
AND INDIANA DEPARTMENT OF NATURAL RESOURCES, INDIANAPOLIS, INDIANA 46204
A FOLDER DESCRIBING TOPOGRAPHIC MAPS AND SYMBOLS IS AVAILABLE ON REQUEST

CALUMET CITY, ILL.-IND.
N4130-W8730/7.5

1968

AMS 3467 II SE-SERIES V863

OCT 14 1970