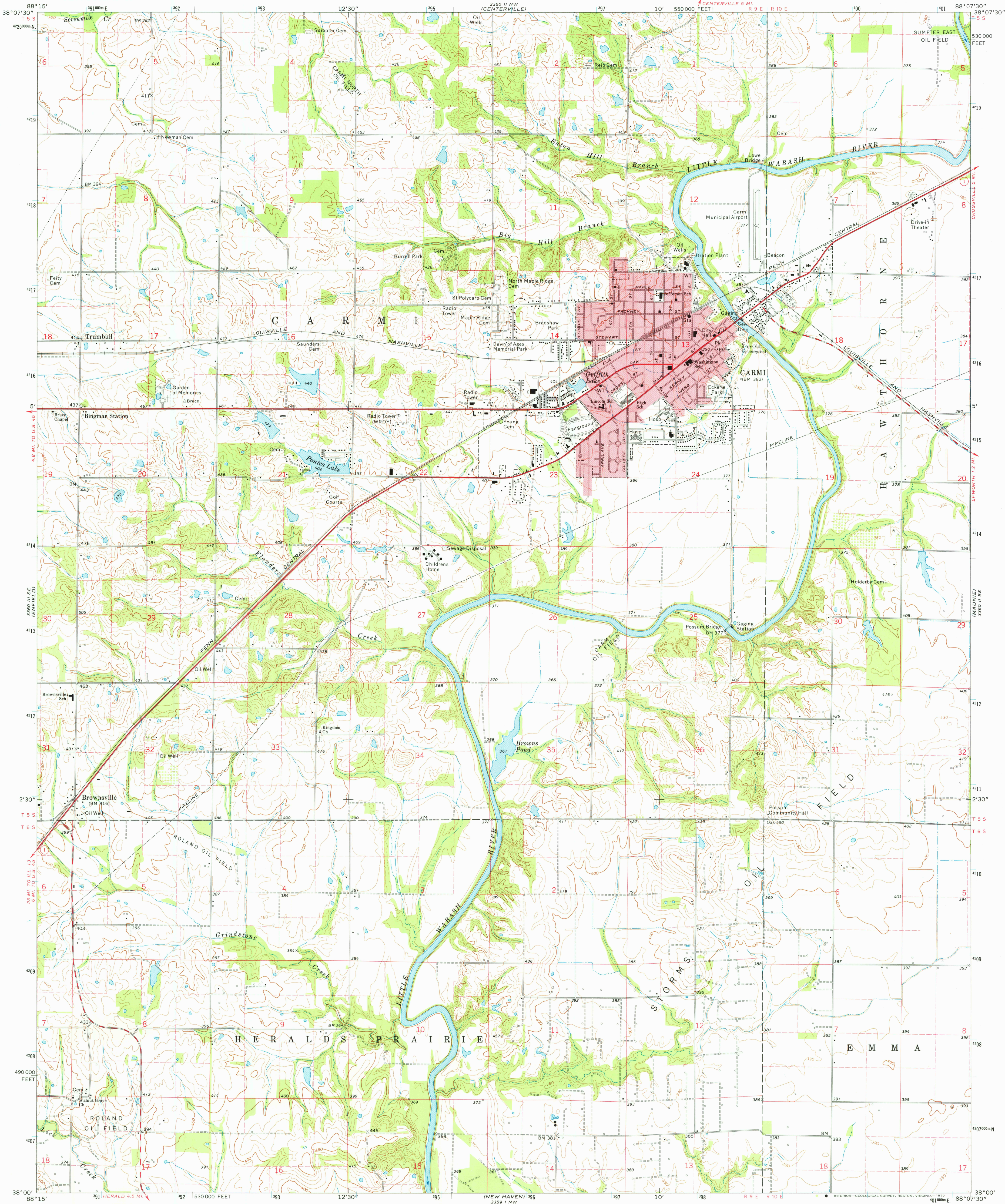
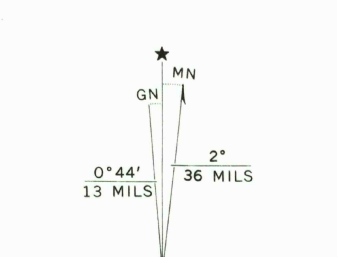


UNITED STATES
DEPARTMENT OF THE INTERIOR
GEOLOGICAL SURVEY

CARMI QUADRANGLE
ILLINOIS—WHITE CO.
7.5 MINUTE SERIES (TOPOGRAPHIC)



Mapped, edited, and published by the Geological Survey
Control by USGS and NOS/NOAA
Topography by photogrammetric methods from aerial
photographs taken 1973. Field checked 1974
Projection and 10,000-foot grid ticks: Illinois coordinate
system, east zone (transverse Mercator)
1000-metre Universal Transverse Mercator grid ticks,
zone 16, shown in blue. 1927 North American datum
Red tint indicates area in which only landmark buildings are shown
Fine red dashed lines indicate selected fence and field lines where
generally visible on aerial photographs. This information is unchecked



SCALE 1:24,000
CONTOUR INTERVAL 10 FEET
NATIONAL GEODETIC VERTICAL DATUM OF 1929

THIS MAP COMPLIES WITH NATIONAL MAP ACCURACY STANDARDS
FOR SALE BY U. S. GEOLOGICAL SURVEY, RESTON, VIRGINIA 22092
AND BY THE STATE GEOLOGICAL SURVEY, URBANA, ILLINOIS 61801
A FOLDER DESCRIBING TOPOGRAPHIC MAPS AND SYMBOLS IS AVAILABLE ON REQUEST



ROAD CLASSIFICATION
Primary highway, hard surface
Secondary highway, hard surface
Unimproved road
Light-duty road, hard or improved surface
Unimproved road
Interstate Route
U. S. Route
State Route

USGS
Historical File
Topographic Division

CARMI, ILL.
SW 1/4 CARMI 15' QUADRANGLE
N 3800—W 8807.5/7.5
1974

JUL 20 1977

AMS 3360 II SW—SERIES V863

3,300