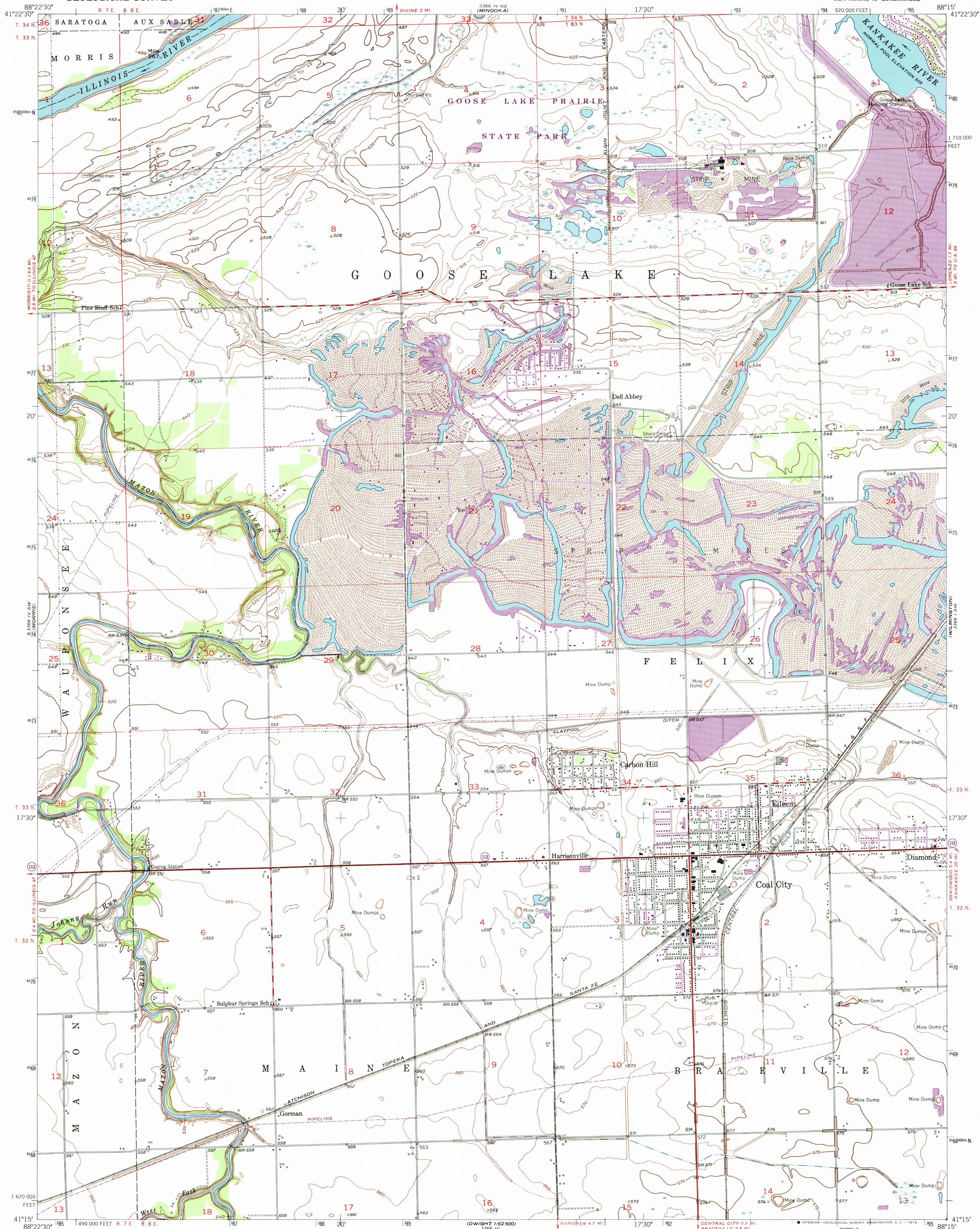


UNITED STATES
DEPARTMENT OF THE INTERIOR
GEOLOGICAL SURVEY

COAL CITY QUADRANGLE
ILLINOIS-GRUNDY CO.
7.5 MINUTE SERIES (TOPOGRAPHIC)
SE/4 MORRIS 15' QUADRANGLE



Mapped, edited, and published by the Geological Survey

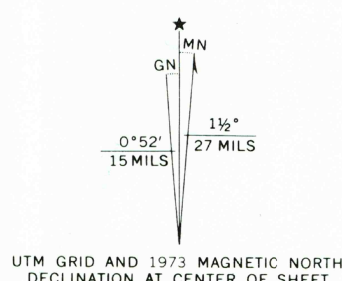
Control by USGS and USC&GS

Culture and drainage in part compiled from aerial photographs taken 1952. Topography by plane-table surveys 1953

Polyconic projection. 1927 North American datum 10,000-foot grid based on Illinois coordinate system; east zone

1000 meter Universal Transverse Mercator grid ticks, zone 16, shown in blue

Revisions shown in purple compiled from aerial photographs taken 1973. This information not field checked



SCALE 1:24,000

CONTOUR INTERVAL 5 FEET
DATUM IS MEAN SEA LEVEL

THIS MAP COMPLIES WITH NATIONAL MAP ACCURACY STANDARDS
FOR SALE BY U. S. GEOLOGICAL SURVEY, WASHINGTON, D. C. 20242
AND BY THE STATE GEOLOGICAL SURVEY, URBANA, ILLINOIS 61801
A FOLDER DESCRIBING TOPOGRAPHIC MAPS AND SYMBOLS IS AVAILABLE ON REQUEST



ROAD CLASSIFICATION
Heavy-duty ——— 4 LANE 6 LANE Light-duty ———
Medium-duty ——— 4 LANE 6 LANE Unimproved dirt ———
U. S. Route ——— State Route ———

USGS
Historical File
Topographic Division

COAL CITY, ILL.
SE/4 MORRIS 15' QUADRANGLE
N4115-W8815/7.5

1953
PHOTOREVISED 1973
AMS 3366 IV SE-SERIES V863

MAY 08 1974