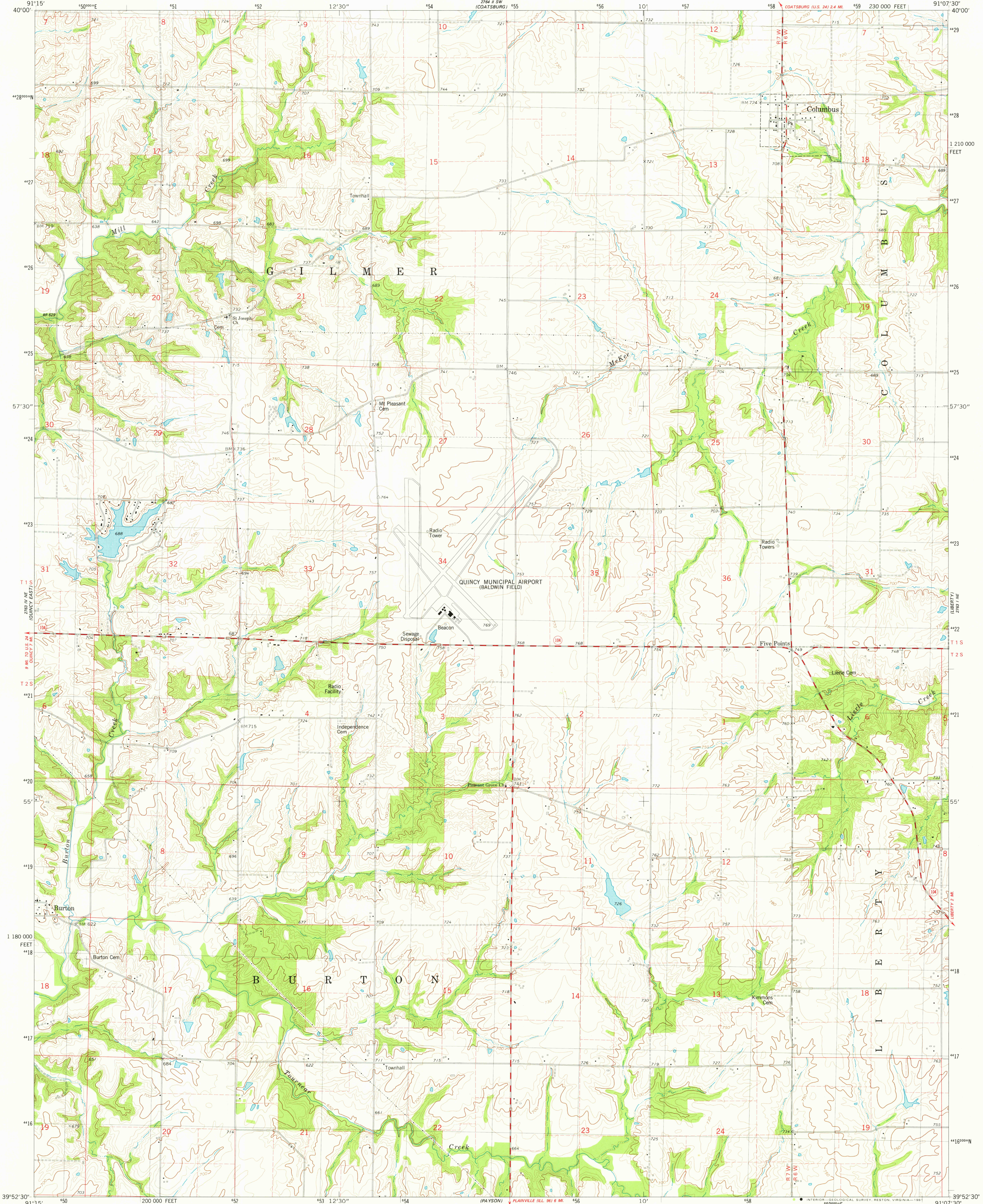


2764 11 SW  
(COATSBURG)

UNITED STATES  
DEPARTMENT OF THE INTERIOR  
GEOLOGICAL SURVEY

COLUMBUS QUADRANGLE  
ILLINOIS-ADAMS CO.  
7.5 MINUTE SERIES (TOPOGRAPHIC)  
NW/4 LIBERTY 15' QUADRANGLE

2764 11 SE  
(CAMP POINT)



(March 1980)  
2764 11 SW

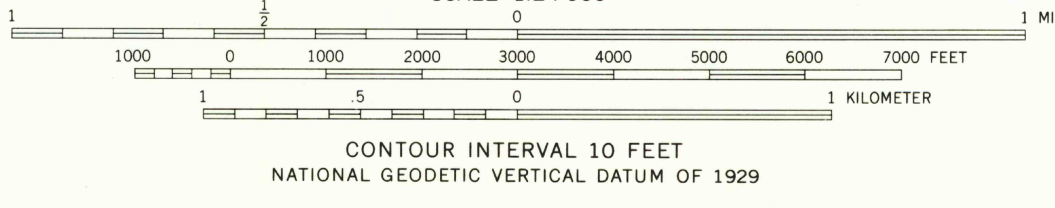
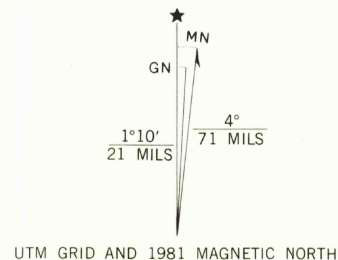
Mapped, edited, and published by the Geological Survey  
Control by USGS and NOS/NOAA

Topography by photogrammetric methods from aerial photographs  
taken 1974. Field checked 1977. Map edited 1981

Projection and 10,000-foot grid ticks: Illinois coordinate  
system, west zone (transverse Mercator)  
1000-meter Universal Transverse Mercator grid, zone 15  
1927 North American Datum

To place on the predicted North American Datum 1983  
move the projection lines 1 meter south and  
11 meters east as shown by dashed corner ticks

Fine red dashed lines indicate selected fence and field lines where  
generally visible on aerial photographs. This information is unchecked



THIS MAP COMPLIES WITH NATIONAL MAP ACCURACY STANDARDS  
FOR SALE BY U. S. GEOLOGICAL SURVEY, RESTON, VIRGINIA 22092  
AND BY THE STATE GEOLOGICAL SURVEY, URBANA, ILLINOIS 61801  
A FOLDER DESCRIBING TOPOGRAPHIC MAPS AND SYMBOLS IS AVAILABLE ON REQUEST



ROAD CLASSIFICATION	
Primary highway, hard surface	Light-duty road, hard or improved surface
Secondary highway, hard surface	Unimproved road
Interstate Route	U. S. Route
	State Route

COLUMBUS, ILL.  
NW/4 LIBERTY 15' QUADRANGLE  
N3952.5-W9107.5/7.5  
1981

DMA 2763 1 NW-SERIES V863

2764 11 SE  
(CAMP POINT)