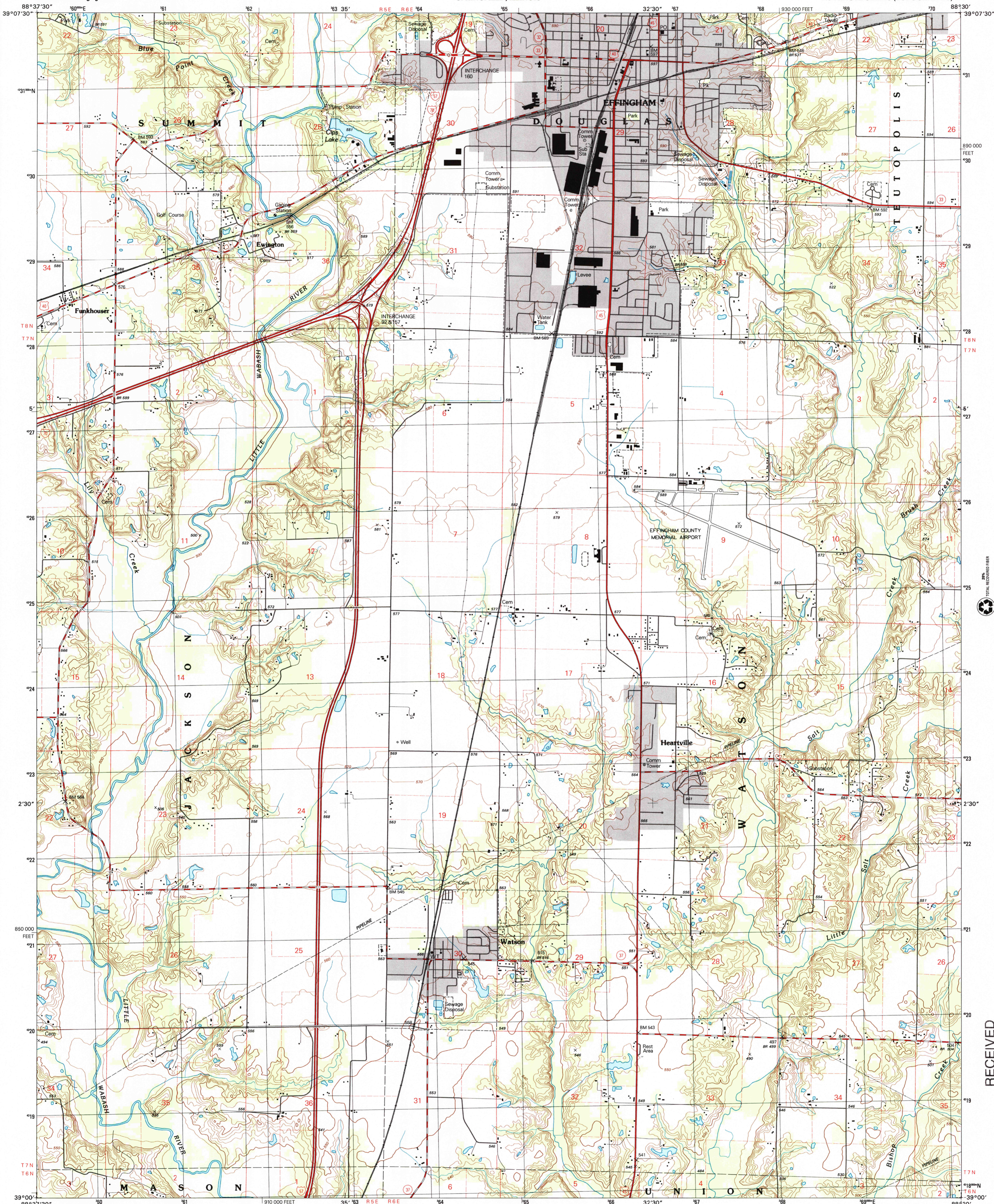




U.S. DEPARTMENT OF THE INTERIOR
U.S. GEOLOGICAL SURVEY

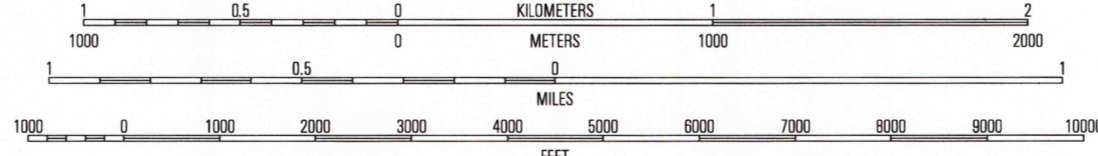
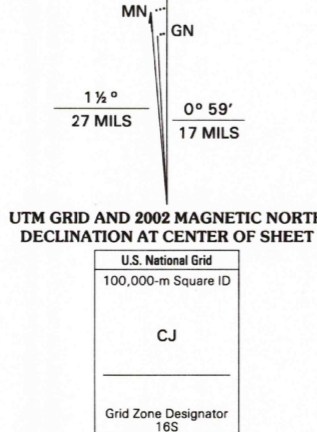
STATE OF ILLINOIS
DEPARTMENT OF TRANSPORTATION
DEPARTMENT OF NATURAL RESOURCES
SPRINGFIELD, ILLINOIS

EFFINGHAM SOUTH QUADRANGLE
ILLINOIS-EFFINGHAM CO.
7.5-MINUTE SERIES (TOPOGRAPHIC)



Produced by the United States Geological Survey

Contours.....National Elevation Dataset, 1981
Roads.....Illinois Department of Transportation, 2001
Other Planimetry.....1998
Public Land Survey System and Survey Control.....1983
Boundaries.....2002
Woodland.....LANDSAT 7, 2001
Houses of Worship, Schools, and Other Labeled Buildings.....1983
North American Datum of 1983 (NAD 83). Projection and
1000-meter grid: Universal Transverse Mercator, zone 16S
10 000-foot ticks: Illinois Coordinate System of 1983 (east zone)
North American Datum of 1927 (NAD 27) is shown by dashed
corner ticks. The values of the shift between NAD 83 and
NAD 27 for 7.5-minute intersections are obtainable from
National Geodetic Survey NADCON software



CONTOUR INTERVAL 10 FEET
NORTH AMERICAN VERTICAL DATUM OF 1988
TO CONVERT FROM FEET TO METERS, MULTIPLY BY 0.3048

THIS MAP COMPLIES WITH NATIONAL MAP ACCURACY STANDARDS
FOR SALE BY U.S. GEOLOGICAL SURVEY, P.O. BOX 25286, DENVER, COLORADO 80225
AND ILLINOIS GEOLOGICAL SURVEY, CHAMPAIGN, ILLINOIS 61820
A FOLDER DESCRIBING TOPOGRAPHIC MAPS AND SYMBOLS IS AVAILABLE ON REQUEST



ROAD CLASSIFICATION
Primary highway.....
hard surface.....
Secondary highway.....
hard surface.....
Light-duty road, hard or
improved surface.....
Unimproved road.....
Interstate Route.....
U.S. Route.....
State Route.....

1	2	3
4	5	6
7	8	9

EFFINGHAM SOUTH, IL
1998

NIMA 3262 II SE-SERIES V863

RECEIVED

2002

USGS NMD
HISTORICAL MAP ARCHIVES

