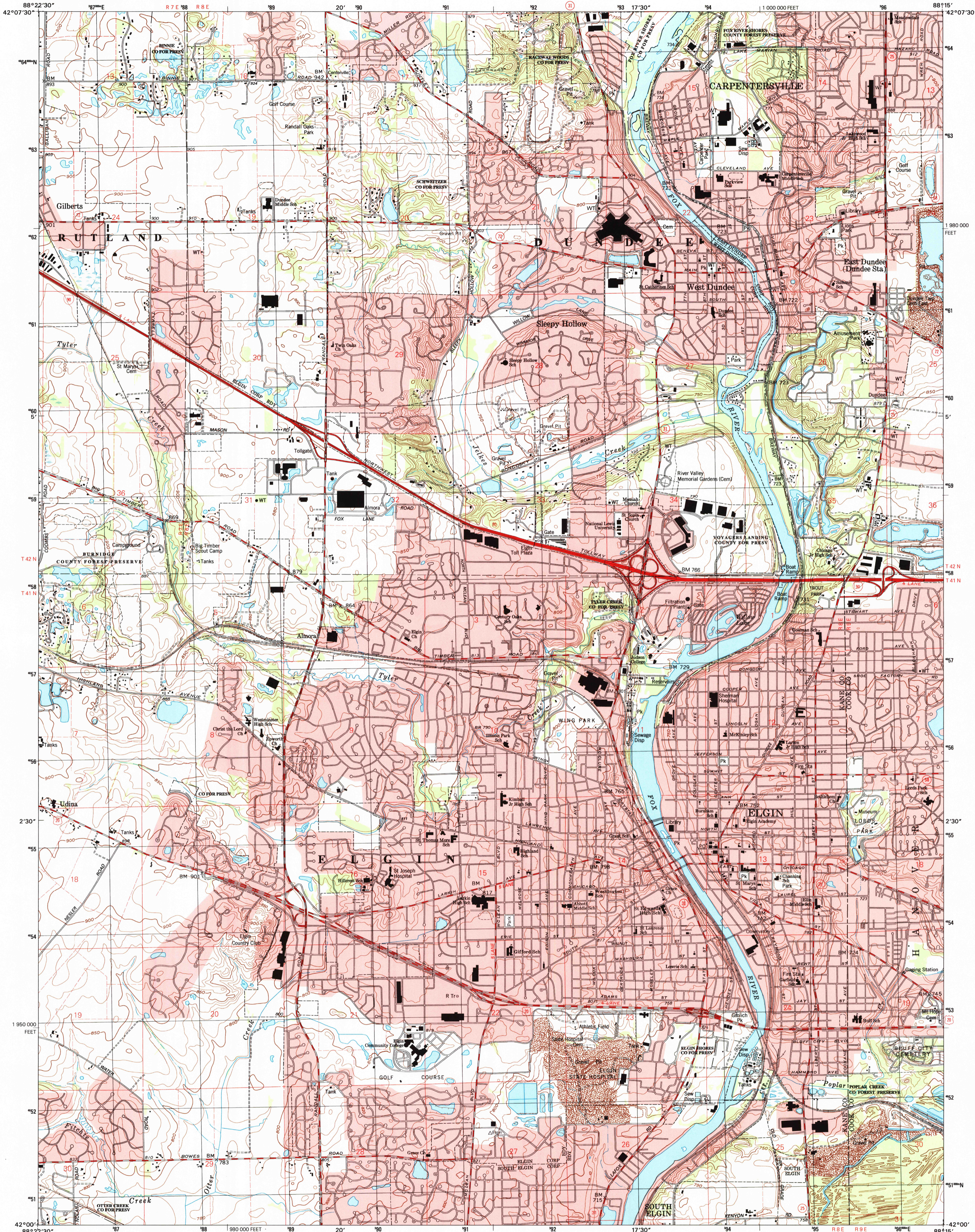




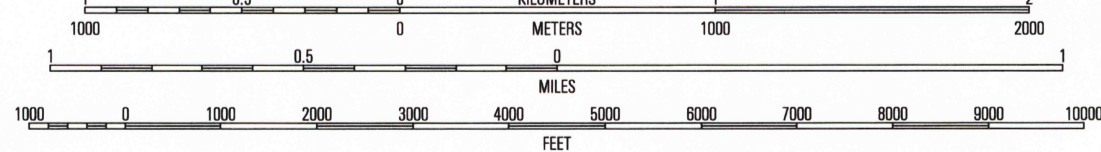
U.S. DEPARTMENT OF THE INTERIOR
U.S. GEOLOGICAL SURVEY

ELGIN QUADRANGLE
ILLINOIS
7.5-MINUTE SERIES (TOPOGRAPHIC)



Produced by the United States Geological Survey
Topography compiled 1988. Planimetry derived from imagery taken 1998 and other sources. Public Land Survey System and survey control current as of 1991. Boundaries current as of 2002 North American Datum of 1983 (NAD 83). Projection and 1000-meter grid: Universal Transverse Mercator, zone 16 10 000-foot ticks: Illinois Coordinate System of 1983 (east zone)
North American Datum of 1927 (NAD 27) is shown by dashed corner ticks. The values of the shift between NAD 83 and NAD 27 for 7.5-minute intersections are obtainable from National Geodetic Survey NADCON software
Houses of worship, schools, and other labeled buildings verified 1991

UTM GRID AND 2002 MAGNETIC NORTH DECLINATION AT CENTER OF SHEET
2 1/2° 44 MILS
0° 53' 16 MILS



CONTOUR INTERVAL 10 FEET
NATIONAL GEODETIC VERTICAL DATUM OF 1929
TO CONVERT FROM FEET TO METERS, MULTIPLY BY 0.3048

THIS MAP COMPLIES WITH NATIONAL MAP ACCURACY STANDARDS
FOR SALE BY U.S. GEOLOGICAL SURVEY, P.O. BOX 25286, DENVER, COLORADO 80225
AND ILLINOIS GEOLOGICAL SURVEY, CHAMPAIGN, ILLINOIS 61820
A FOLDER DESCRIBING TOPOGRAPHIC MAPS AND SYMBOLS IS AVAILABLE ON REQUEST



ROAD CLASSIFICATION
Primary highway
hard surface
Secondary highway
hard surface
Light-duty road, hard or
improved surface
Unimproved road
Interstate Route
U.S. Route
State Route

1	2	3	1 Huntley
4	5	6	2 Crystal Lake
7	8	9	3 Barrington
10	11	12	4 Pingree Grove
13	14	15	5 Streamwood
16	17	18	6 Elmhurst
19	20	21	7 Geneva
22	23	24	8 West Chicago

ELGIN, IL
1998

NIMA 3368 III SE-SERIES V863

RECEIVED
JAN 07 2003
USGS WNU
HISTORICAL MAP ARCHIVES

