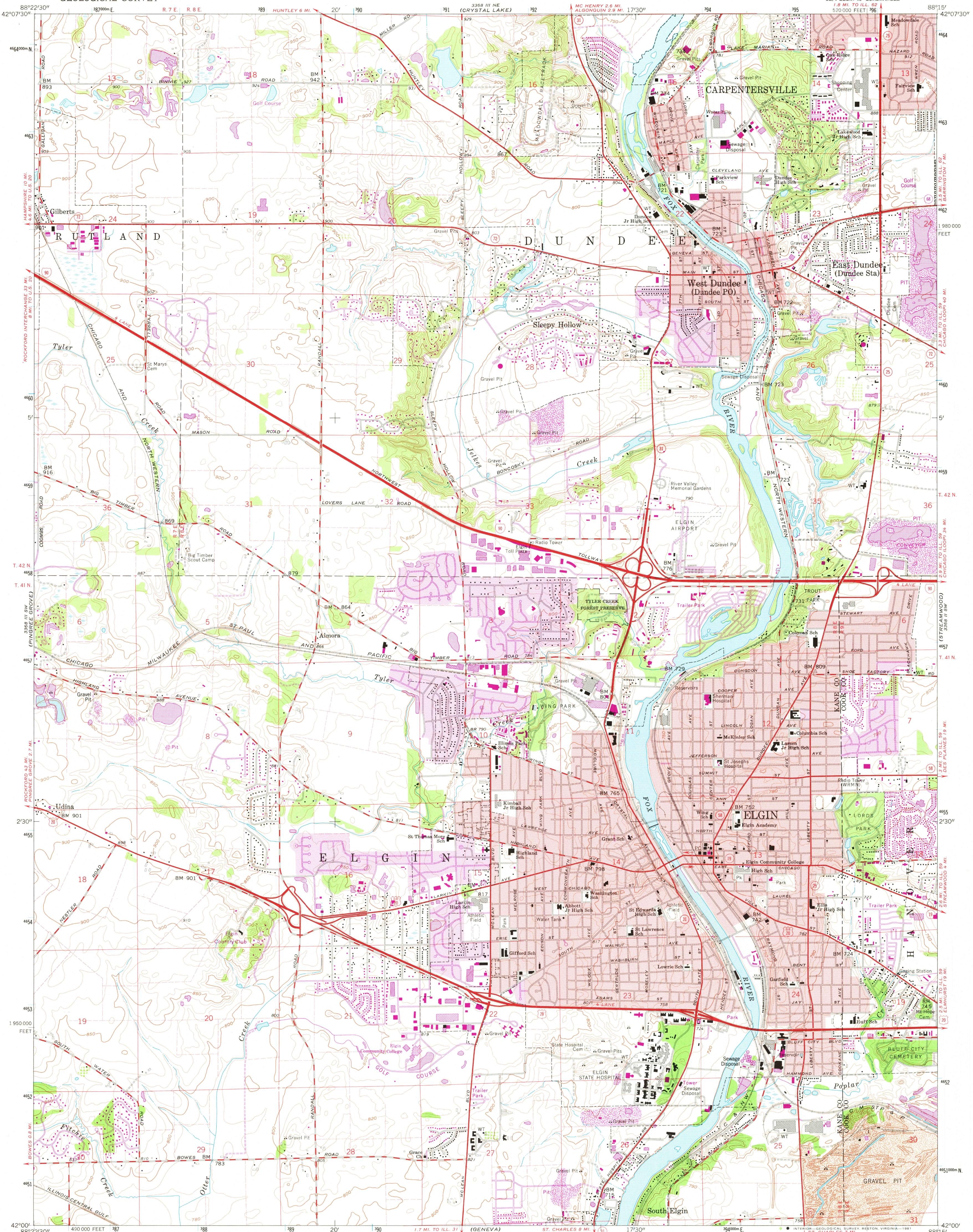


UNITED STATES
DEPARTMENT OF THE INTERIOR
GEOLOGICAL SURVEY

ELGIN QUADRANGLE
ILLINOIS
7.5 MINUTE SERIES (TOPOGRAPHIC)



Mapped, edited, and published by the Geological Survey

Control by USGS and USC&GS

Topography by photogrammetric methods from aerial

photographs taken 1958. Field checked 1962

Polyconic projection. 1927 North American datum

10,000-foot grid based on Illinois coordinate system, east zone

1000-meter Universal Transverse Mercator grid ticks,

zone 16, shown in blue

Red tint indicates areas in which only landmark buildings are shown

Fine red dashed lines indicate selected fence and field lines where

generally visible on aerial photographs. This information is unchecked

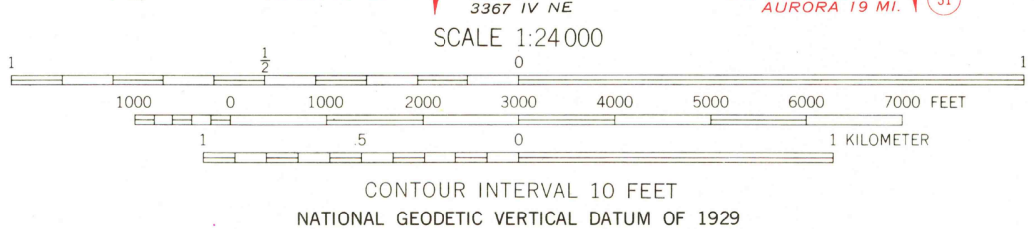
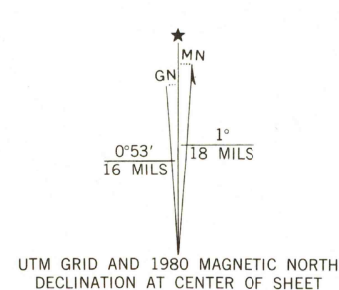
To place on the predicted North American Datum 1983

move the projection lines 2 meters north and

6 meters east as shown by dashed corner ticks

There may be private inholdings within the boundaries of

the National or State reservations shown on this map



THIS MAP COMPLIES WITH NATIONAL MAP ACCURACY STANDARDS
FOR SALE BY U. S. GEOLOGICAL SURVEY, RESTON, VIRGINIA 22092
AND BY THE STATE GEOLOGICAL SURVEY, URBANA, ILLINOIS 61801
A FOLDER DESCRIBING TOPOGRAPHIC MAPS AND SYMBOLS IS AVAILABLE ON REQUEST

Revisions shown in purple compiled from aerial photographs
taken 1972 and 1978. Map edited 1980
This information not field checked
Purple tint indicates extension of urban area

ROAD CLASSIFICATION
Primary highway, hard surface
Secondary highway, hard surface
Light-duty road, hard or improved surface
Unimproved road
Interstate Route
U. S. Route
State Route

ELGIN, ILL.
SE/4 ELGIN 15' QUADRANGLE
N4200—W8815/7.5

1962
PHOTOREVISED 1972 AND 1980
DMA 3368 III SE—SERIES V863

USGS
Historical File
National Mapping Division
MAR 27 1981

2193