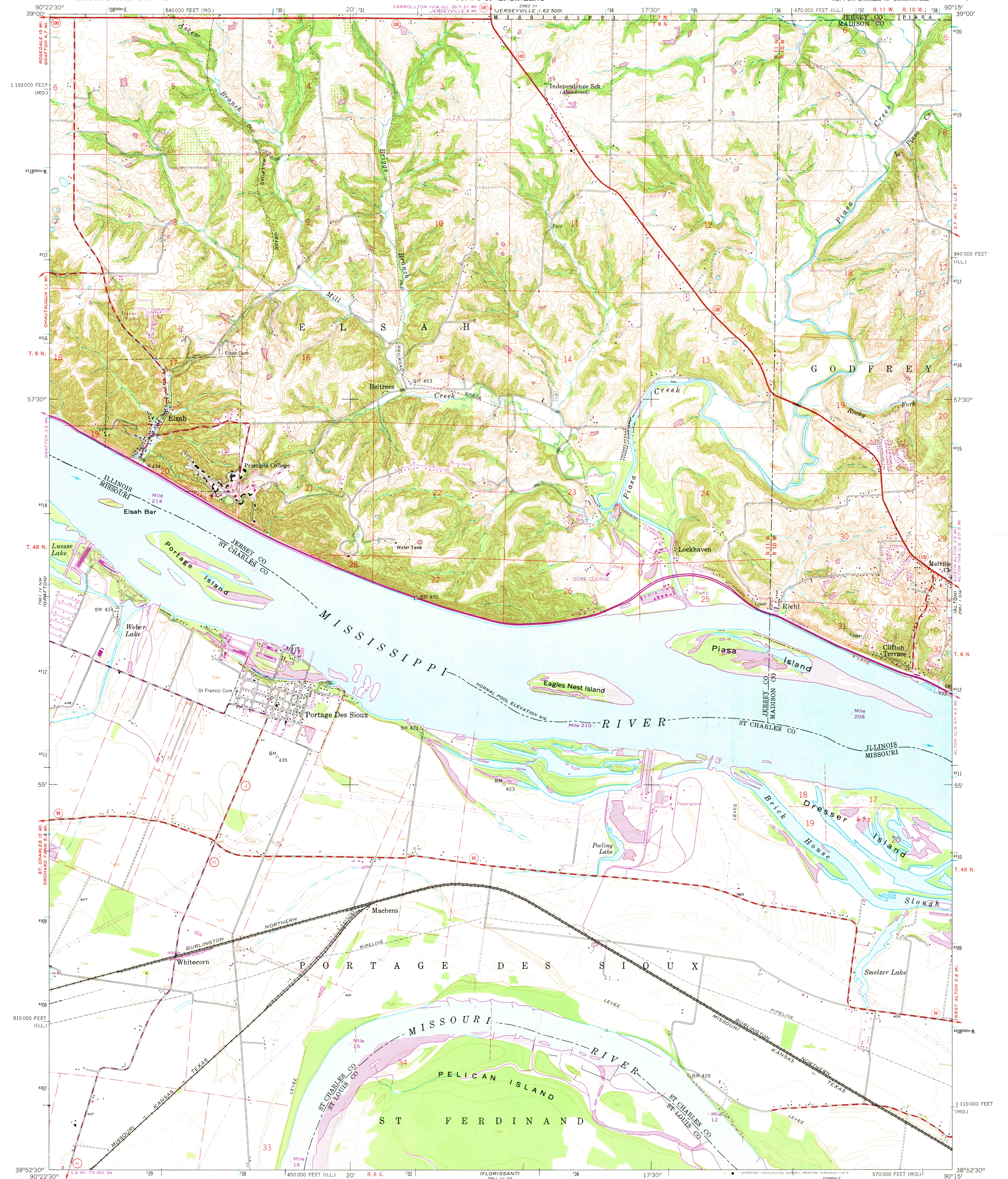


UNITED STATES
DEPARTMENT OF THE INTERIOR
GEOLOGICAL SURVEY

UNITED STATES
DEPARTMENT OF THE ARMY
CORPS OF ENGINEERS

ELSAH QUADRANGLE
ILLINOIS—MISSOURI
7.5 MINUTE SERIES (TOPOGRAPHIC)
NE 1/4 ST. CHARLES 19' QUADRANGLE

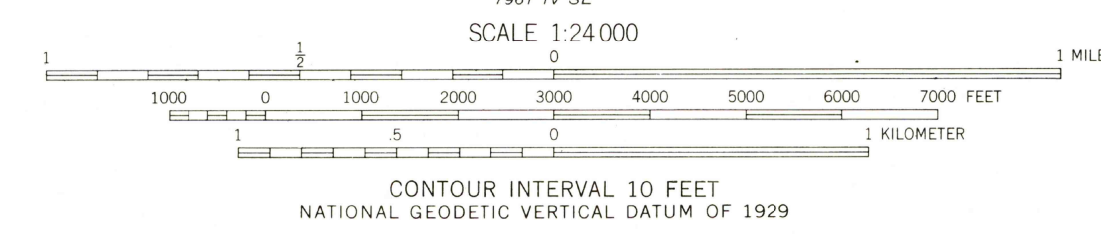
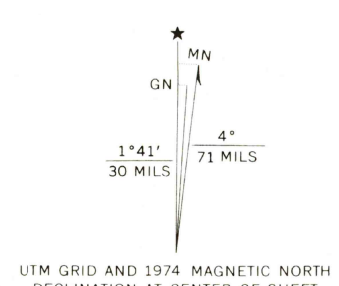


Map by the Army Map Service
Published for civil use by the Geological Survey
Control by USGS, USC&GS, and USCE

Topography from aerial photographs by photogrammetric methods
Aerial photographs taken 1952. Field check 1954
Polyconic projection. 1927 North American datum
10,000-foot grid based on Illinois coordinate system, west zone
and Missouri coordinate system, east zone
1000-meter Universal Transverse Mercator grid ticks, zone 15,
shown in blue

Dashed land lines indicate approximate locations
Unchecked elevations are shown in brown

Revisions shown in purple compiled by the Geological Survey from
aerial photographs taken 1968 and 1974
This information not field checked



THIS MAP COMPLIES WITH NATIONAL MAP ACCURACY STANDARDS
FOR SALE BY U. S. GEOLOGICAL SURVEY, DENVER, COLORADO 80225, OR RESTON, VIRGINIA 22092
STATE GEOLOGICAL SURVEY, URBANA, ILLINOIS 61801.
AND BY THE DIVISION OF RESEARCH AND TECHNICAL INFORMATION
MISSOURI DEPARTMENT OF NATURAL RESOURCES, ROLLA, MISSOURI 65401
A FOLDER DESCRIBING TOPOGRAPHIC MAPS AND SYMBOLS IS AVAILABLE ON REQUEST



ROAD CLASSIFICATION
Heavy-duty ——— Light-duty ———
Medium-duty ——— Unimproved dirt ———
○ State Route

USGS
HISTORICAL FILE
TOPOGRAPHIC DIVISION

ELSAH, ILL.—MO.
NE 1/4 ST. CHARLES 19' QUADRANGLE
N 3852.5—W 9015.7.5
1954
PHOTOREVISED 1968 AND 1974
AMS 2961 IV NE—SERIES V 863