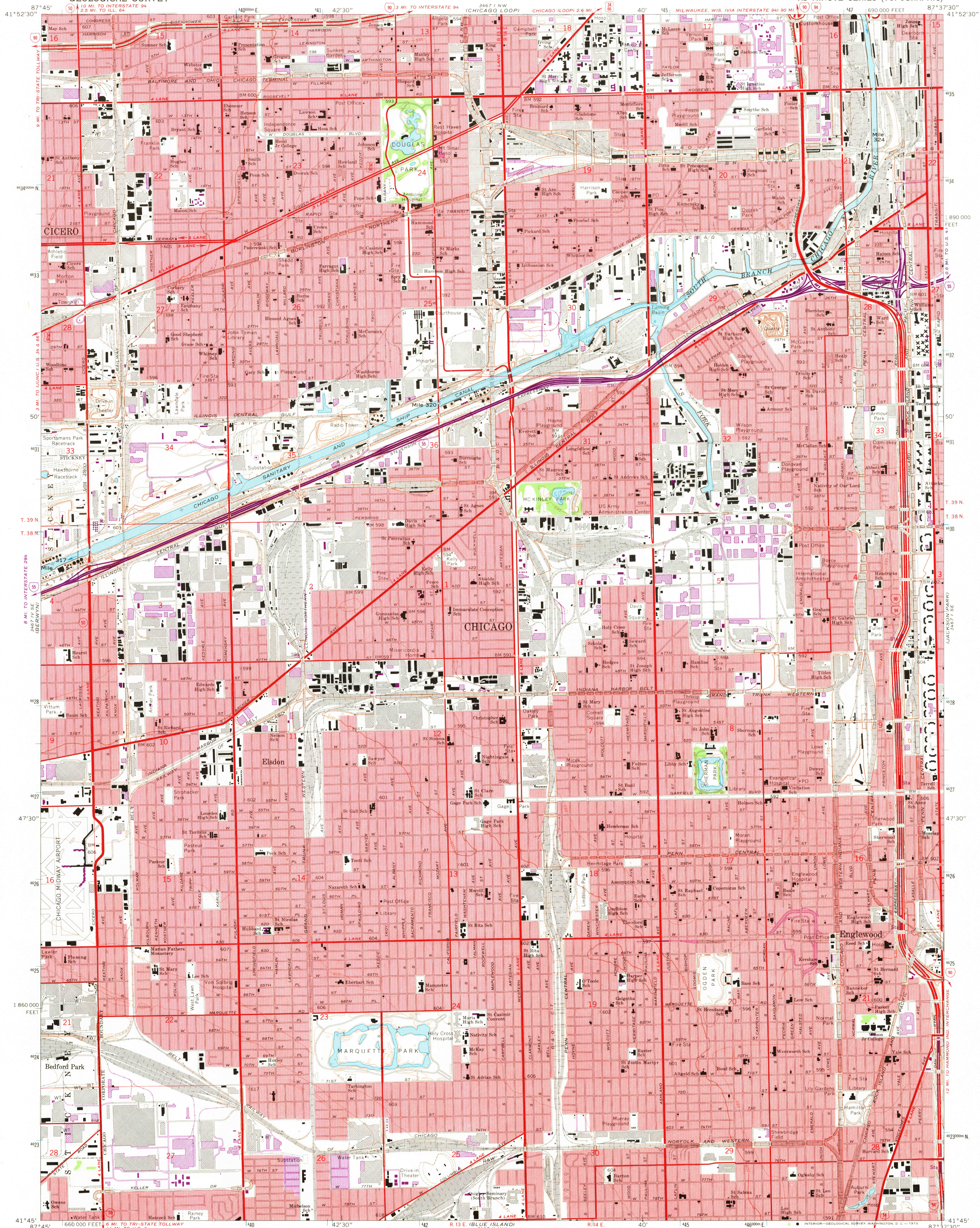


UNITED STATES
DEPARTMENT OF THE INTERIOR
GEOLOGICAL SURVEY

ENGLEWOOD QUADRANGLE
ILLINOIS—COOK CO.
7.5 MINUTE SERIES (TOPOGRAPHIC)



Maped, edited, and published by the Geological Survey in cooperation with State of Illinois Geological Survey
Control by USGS, USC&GS, and City of Chicago
Planimetry by photogrammetric methods from aerial photographs taken 1962-63. Topography by planetable surveys 1926. Revised 1963
Selected hydrographic data compiled from U.S. Lake Survey Chart 752 (1963)
This information is not intended for navigational purposes
Polyconic projection. 1927 North American datum, 10,000-foot grid based on Illinois coordinate system, east zone 1000-meter Universal Transverse Mercator grid ticks, zone 16, shown in blue
Red tint indicates areas in which only landmark buildings are shown

SCALE 1:24,000
CONTOUR INTERVAL 5 FEET
DATUM IS MEAN SEA LEVEL
DEPTH CURVES AND SOUNDINGS IN FEET—DATUM IS LOW WATER 578.5 FEET

THIS MAP COMPLIES WITH NATIONAL MAP ACCURACY STANDARDS
FOR SALE BY U.S. GEOLOGICAL SURVEY, WASHINGTON, D.C. 20542
AND BY THE STATE GEOLOGICAL SURVEY, URBANA, ILLINOIS 61801
A FOLDER DESCRIBING TOPOGRAPHIC MAPS AND SYMBOLS IS AVAILABLE ON REQUEST

ROAD CLASSIFICATION
Heavy-duty ——— Light-duty ———
Unimproved dirt ———
Interstate Route — U.S. Route — State Route

JUL 30 1973

ENGLEWOOD, ILL.
N4145—W8737.5/7.5

1963
PHOTOREVISED 1972
AMS 3467 1 SW—SERIES V863

Revisions shown in purple compiled from aerial photographs taken 1972. This information not field checked
Purple tint indicates extension of urban areas

QUADRANGLE LOCATION