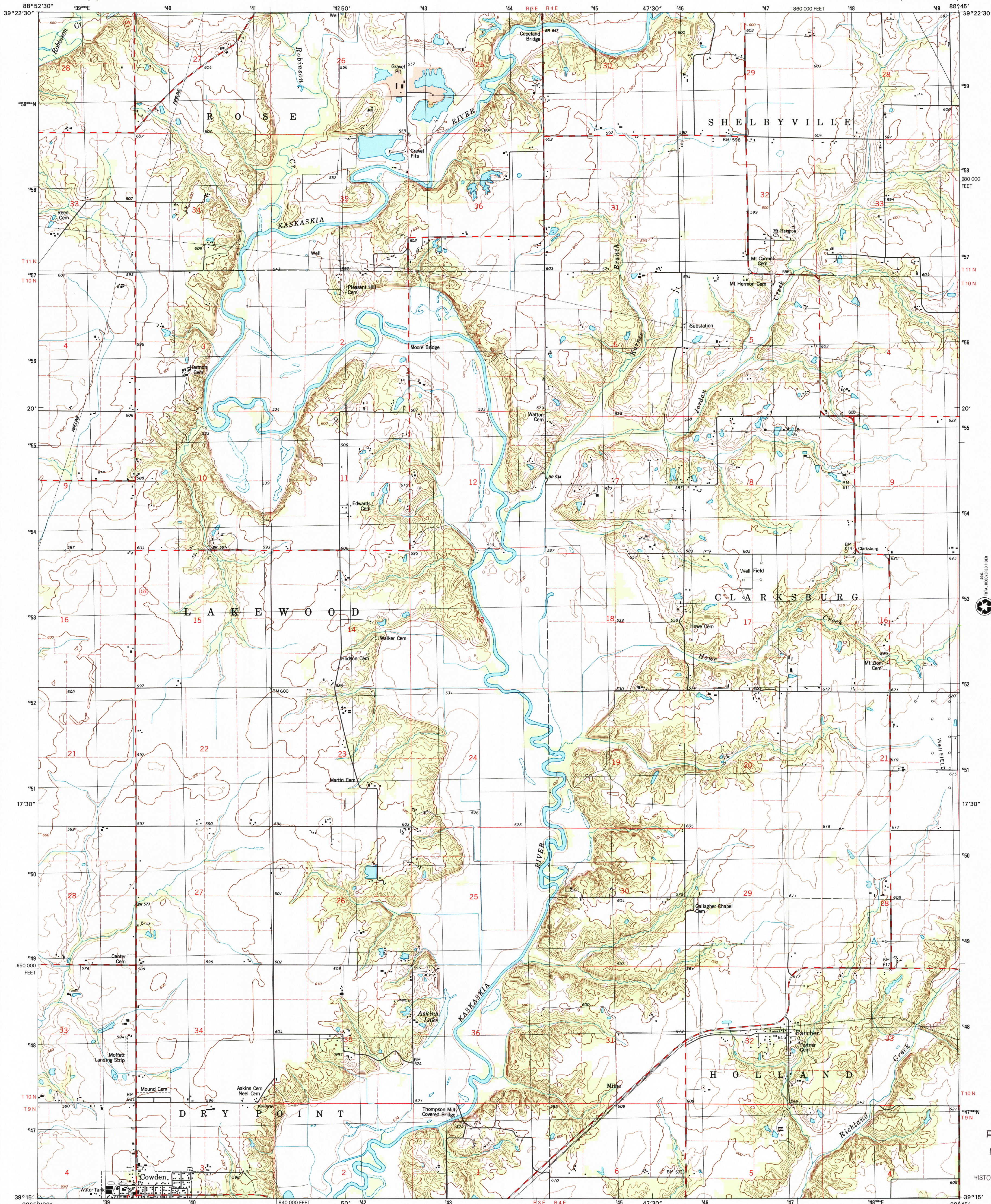




U.S. DEPARTMENT OF THE INTERIOR
U.S. GEOLOGICAL SURVEY

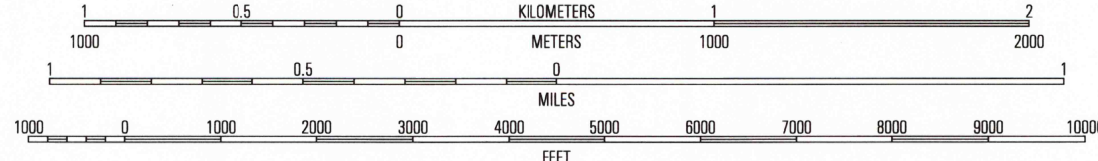
FANCHER QUADRANGLE
ILLINOIS-SHELBY CO.
7.5-MINUTE SERIES (TOPOGRAPHIC)



Produced by the United States Geological Survey

Contours..... National Elevation Dataset, 1978
Roads..... Illinois Department of Transportation, 2001
Other Planimetry..... 1998
Public Land Survey System and Survey Control..... 1979
Boundaries..... 2002
Woodland..... LANDSAT 7, 2001
Houses of Worship, Schools, and Other Labeled Buildings..... 1979
North American Datum of 1983 (NAD 83). Projection and
1 000-meter grid: Universal Transverse Mercator, zone 16S
10 000-foot ticks: Illinois Coordinate System of 1983 (east zone)
North American Datum of 1927 (NAD 27) is shown by dashed
corner ticks. The values of the shift between NAD 83 and
NAD 27 for 7.5-minute intersections are obtainable from
National Geodetic Survey NADCON software

UTM GRID AND 2003 MAGNETIC NORTH
DECLINATION AT CENTER OF SHEET
U.S. National Grid
100,000-m Square ID
CJ
Grid Zone Designator
16S



SCALE 1:24 000
CONTOUR INTERVAL 10 FEET
NORTH AMERICAN VERTICAL DATUM OF 1988
TO CONVERT FROM FEET TO METERS, MULTIPLY BY 0.3048

THIS MAP COMPLIES WITH NATIONAL MAP ACCURACY STANDARDS
FOR SALE BY U.S. GEOLOGICAL SURVEY, P.O. BOX 25286, DENVER, COLORADO 80225
AND ILLINOIS GEOLOGICAL SURVEY, CHAMPAIGN, ILLINOIS 61820
A FOLDER DESCRIBING TOPOGRAPHIC MAPS AND SYMBOLS IS AVAILABLE ON REQUEST



INTERIOR: GEOLOGICAL SURVEY, RESTON, VIRGINIA - 2003

ROAD CLASSIFICATION

Primary highway
hard surface
Secondary highway
hard surface
Light-duty road, hard or
improved surface
Unimproved road
Interstate Route
U.S. Route
State Route

1	2	3
4	5	6
7	8	9

1 Tower Hill
2 Shelbyville
3 Middleworth
4 Lakewood
5 Stewardson West
6 Herrick
7 Beecher City
8 Shumway

APR 2003

FANCHER, IL
1998

NIMA 3262 IV SE-SERIES V863

RECEIVED
MAY 28 2003
USGS NMD
HISTORICAL MAP ARCHIVES

