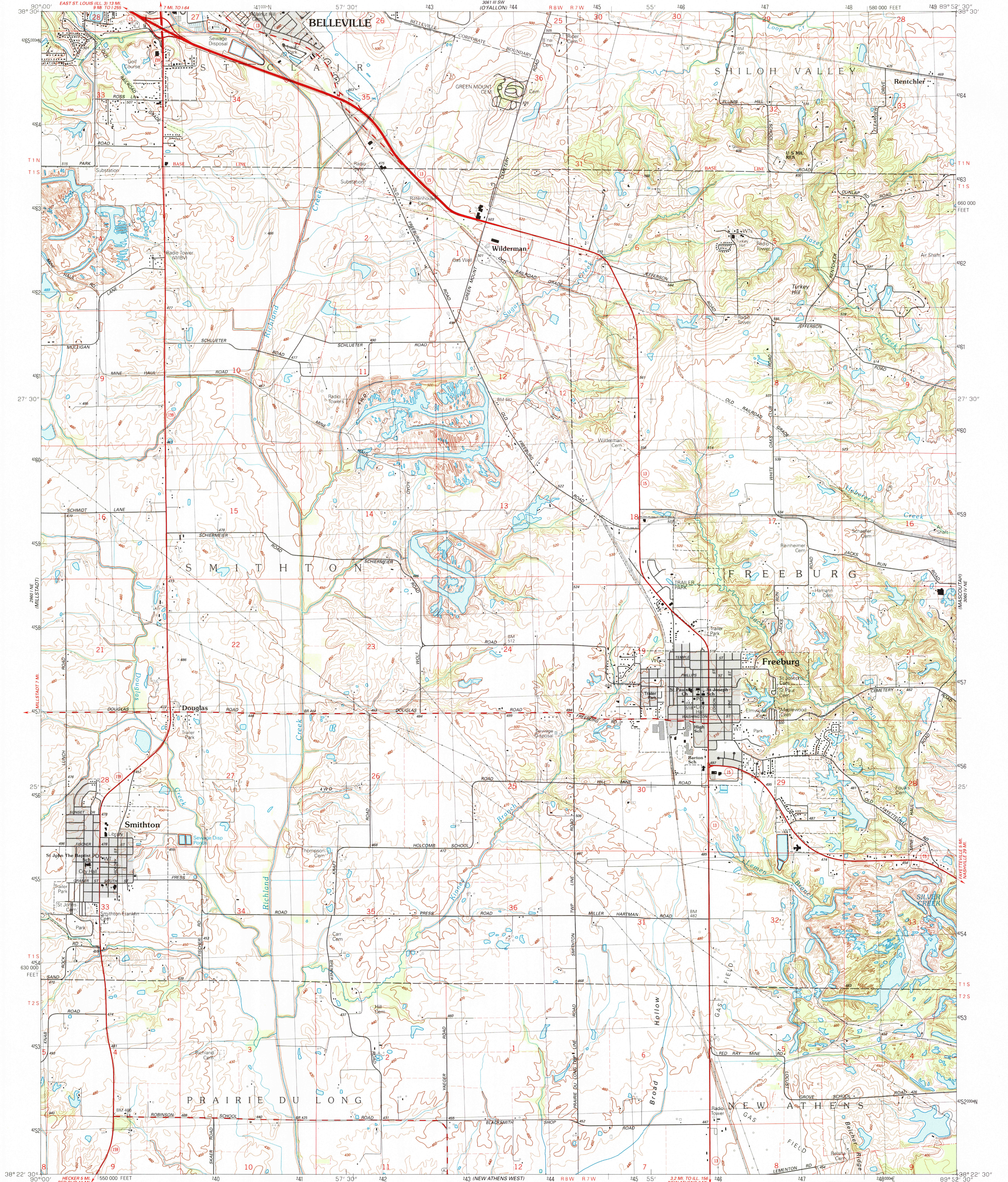


UNITED STATES
DEPARTMENT OF THE INTERIOR
GEOLOGICAL SURVEY

STATE OF ILLINOIS
DEPARTMENT OF ENERGY AND NATURAL RESOURCES
GEOLOGICAL SURVEY DIVISION
CHAMPAIGN, ILLINOIS

FREEBURG QUADRANGLE
ILLINOIS-ST. CLAIR CO.
7.5 MINUTE SERIES (TOPOGRAPHIC)



Produced by the United States Geological Survey

Control by USGS and NOS/NOAA

Topography by photogrammetric methods from aerial photographs taken 1986. Field checked 1988. Map edited 1990

Supersedes Army Map Service map dated 1974

Projection and 10,000-foot grid ticks: Illinois coordinate system, west zone (transverse Mercator)

1000-meter Universal Transverse Mercator grid, zone 16

1927 North American Datum

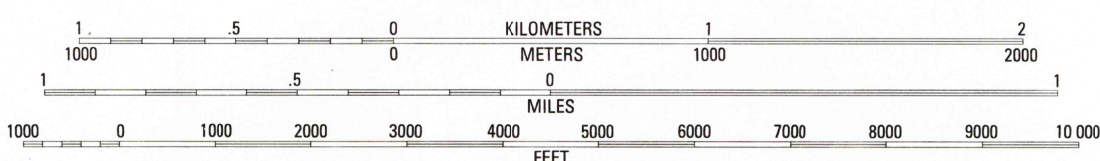
To place on the predicted North American Datum 1983, move the projection lines 2 meters south and 8 meters east as shown by dashed corner ticks

There may be private inholdings within the boundaries of the National or State reservations shown on this map

Gray tint indicates areas in which only landmark buildings are shown

Fine red dashed lines indicate selected fence and field lines where generally visible on aerial photographs. This information is unchecked

SCALE 1:24 000



CONTOUR INTERVAL 10 FEET

NATIONAL GEODETIC VERTICAL DATUM OF 1929

THIS MAP COMPLIES WITH NATIONAL MAP ACCURACY STANDARDS

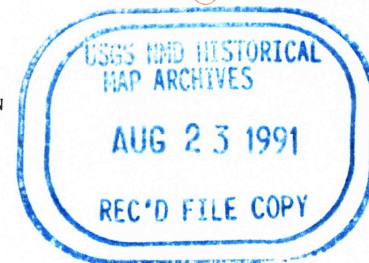
FOR SALE BY U. S. GEOLOGICAL SURVEY, DENVER, COLORADO 80225, OR RESTON, VIRGINIA 22092

AND ILLINOIS GEOLOGICAL SURVEY, CHAMPAIGN, ILLINOIS 61820

A FOLDER DESCRIBING TOPOGRAPHIC MAPS AND SYMBOLS IS AVAILABLE ON REQUEST

ROAD CLASSIFICATION

- Primary highway, hard surface
- Secondary highway, hard surface
- Unimproved road
- Interstate Route
- U. S. Route
- State Route
- Light-duty road, hard or improved surface
- Unimproved road



FREEBURG, ILL.

NW/4 NEW ATHENS 15' QUADRANGLE

38089 D8-TF-024

1990

DMA 3060 IV NW-SERIES V863