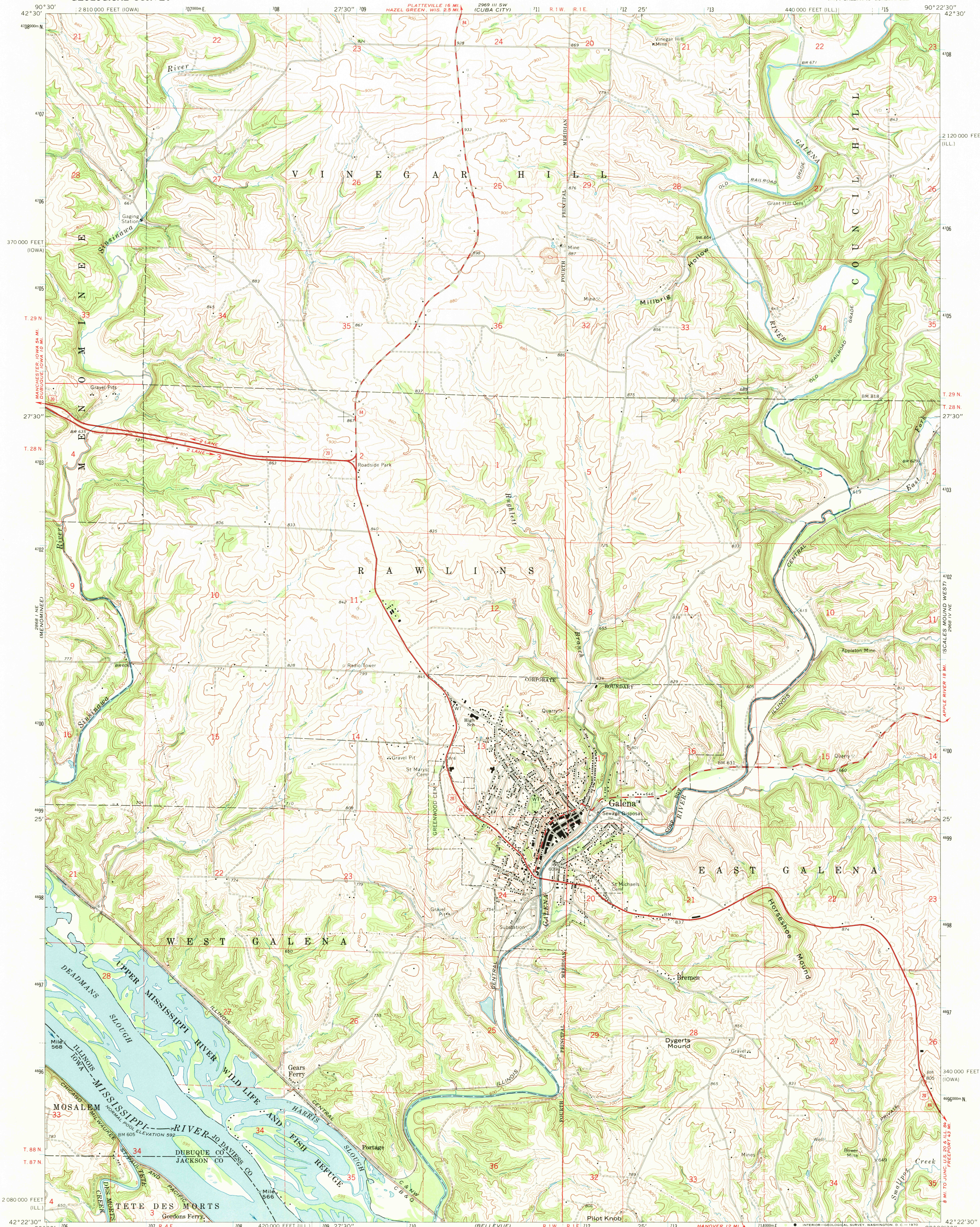


UNITED STATES
DEPARTMENT OF THE INTERIOR
GEOLOGICAL SURVEY

GALENA QUADRANGLE
ILLINOIS-IOWA
7.5 MINUTE SERIES (TOPOGRAPHIC)
NW/4 GALENA 15' QUADRANGLE

2069 IV SE
(NEW ORIGIN)

2069 IV SE
(KELLER)



Mapped, edited, and published by the Geological Survey

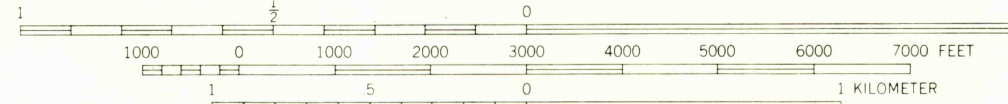
Control by USGS, USC&GS, and USCE

Topography by photogrammetric methods from aerial photographs taken 1966. Field checked 1968

Polyconic projection. 1927 North American datum
10,000-foot grids based on Illinois coordinate system, west zone,
and Iowa coordinate system, north zone
1000-meter Universal Transverse Mercator grid ticks,
zone 15, shown in blue

Fine red dashed lines indicate selected fence and field lines where
generally visible on aerial photographs. This information is unchecked

UTM GRID AND 1968 MAGNETIC NORTH
DECLINATION AT CENTER OF SHEET



THIS MAP COMPLIES WITH NATIONAL MAP ACCURACY STANDARDS
FOR SALE BY U. S. GEOLOGICAL SURVEY, DENVER, COLORADO 80225, OR WASHINGTON, D. C. 20242,
STATE GEOLOGICAL SURVEY, URBANA, ILLINOIS 61801,
AND IOWA GEOLOGICAL SURVEY, IOWA CITY, IOWA 52240
A FOLDER DESCRIBING TOPOGRAPHIC MAPS AND SYMBOLS IS AVAILABLE ON REQUEST

USGS
Historical File
Topographic Division



U.S.G.S.
FILE COPY
TOPOGRAPHIC DIVISION

ROAD CLASSIFICATION
Primary highway, all weather, hard surface
Secondary highway, all weather, hard surface
Light-duty road, all weather, improved surface
Unimproved road, fair or dry weather
State Route

GALENA, ILL.-IOWA
NW/4 GALENA 15' QUADRANGLE
N4225-W9022.5/7.5

1968
AMS 2968 IV NW-SERIES V863

JUN 19 1970