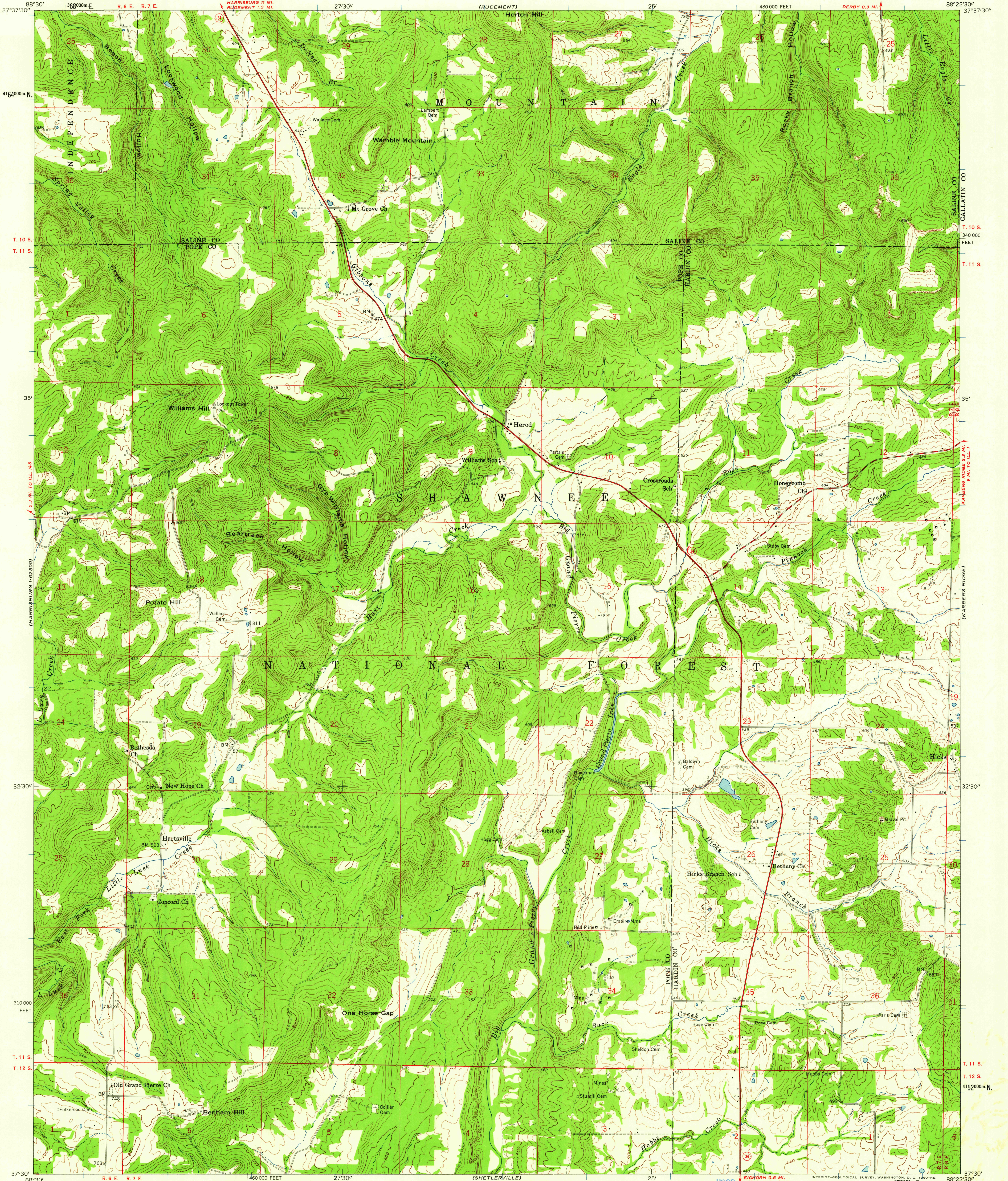


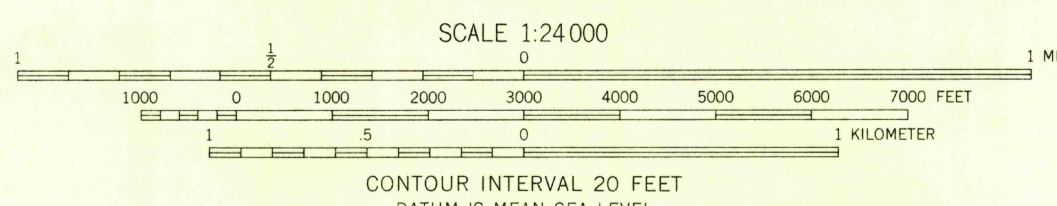
UNITED STATES  
DEPARTMENT OF THE INTERIOR  
GEOLOGICAL SURVEY

STATE OF ILLINOIS  
WILLIAM G. STRATTON, GOVERNOR  
DEPARTMENT OF REGISTRATION AND EDUCATION  
VERA M. BINKS, DIRECTOR  
GEOLOGICAL SURVEY DIVISION, JOHN C. FRYE, CHIEF  
URBANA, ILLINOIS

HEROD QUADRANGLE  
ILLINOIS  
7.5 MINUTE SERIES (TOPOGRAPHIC)  
SW 1/4 EQUALITY 15' QUADRANGLE



Mapped, edited, and published by the Geological Survey  
Control by USGS and USC&GS  
Topography from aerial photographs by photogrammetric methods  
Aerial photographs taken 1957. Field check 1959  
Polyconic projection. 1927 North American datum  
10,000-foot grid based on Illinois coordinate system, east zone  
1000-meter Universal Transverse Mercator grid ticks,  
zone 16, shown in blue



USGS  
Historical File  
Topographic Division

ROAD CLASSIFICATION  
Heavy-duty ——— Light-duty ———  
Medium-duty ——— Unimproved dirt ———  
State Route



U.S.G.S. FILE COPY  
TOPOGRAPHIC DIVISION  
HEROD, ILL.  
SW 1/4 EQUALITY 15' QUADRANGLE  
N 3730-W8825/7.5  
1959

FEB 10 1960

2580