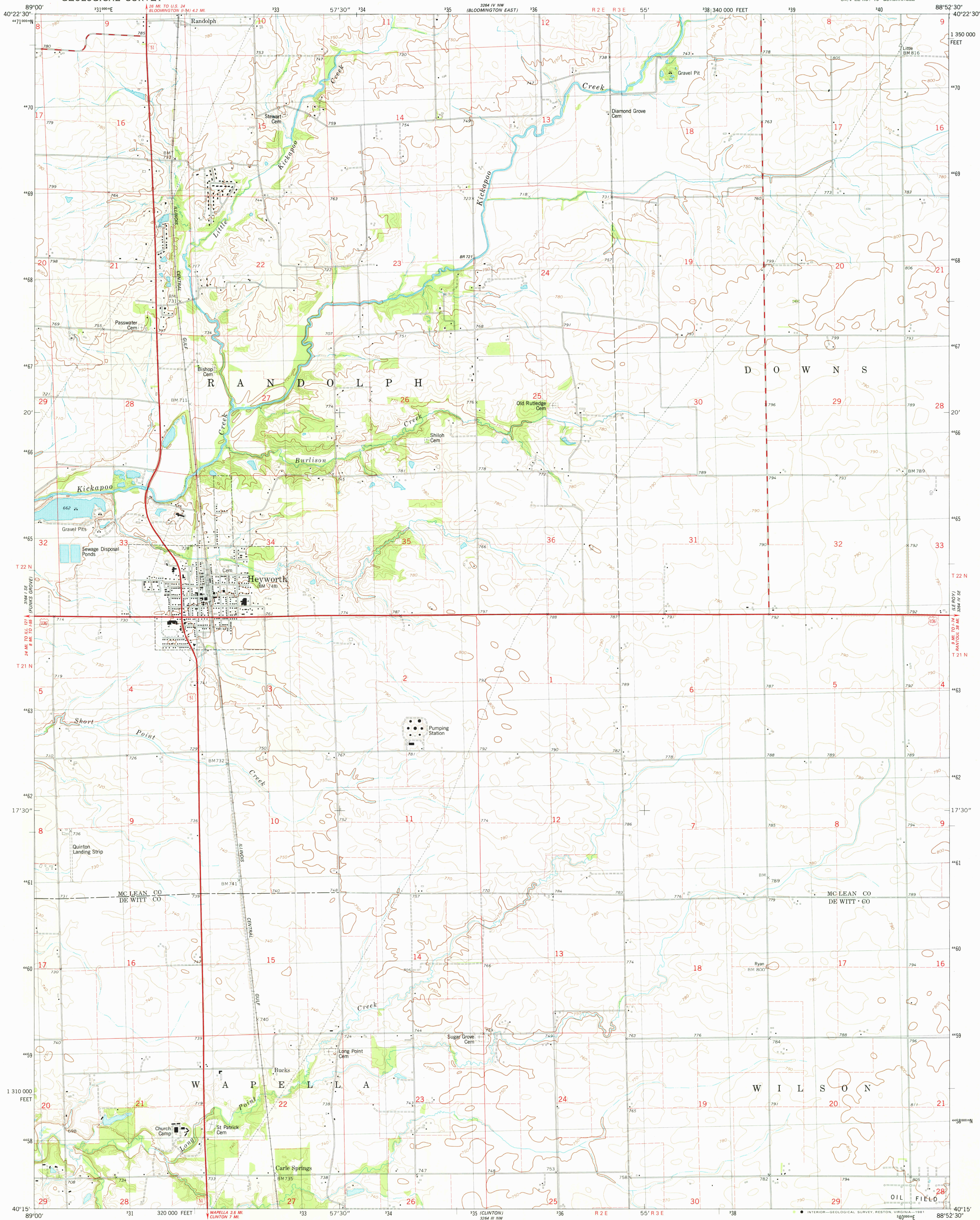


UNITED STATES  
DEPARTMENT OF THE INTERIOR  
GEOLOGICAL SURVEY

HEYWORTH QUADRANGLE  
ILLINOIS  
7.5 MINUTE SERIES (TOPOGRAPHIC)



Mapped, edited, and published by the Geological Survey

Control by USGS and NOS/NOAA

Topography by photogrammetric methods from aerial photographs

taken 1975. Field checked 1976. Map edited 1981

Projection and 10,000-foot grid ticks: Illinois coordinate

system, east zone (transverse Mercator)

1000-meter Universal Transverse Mercator grid, zone 16

1927 North American Datum

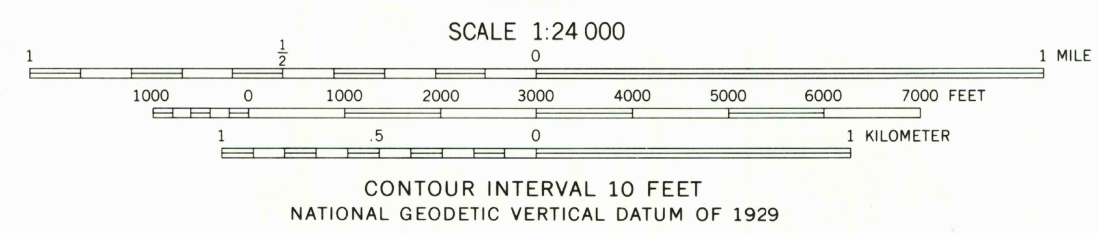
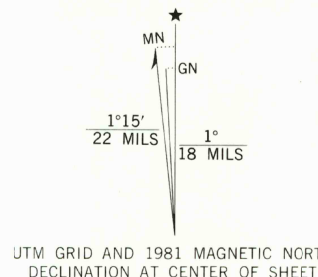
To place on the predicted North American Datum 1983

move the projection lines 6 meters east as shown by

dashed corner ticks

Fine red dashed lines indicate selected fence and field lines where

generally visible on aerial photographs. This information is unchecked



ROAD CLASSIFICATION

Primary highway, hard surface	Light-duty road, hard or improved surface
Secondary highway, hard surface	Unimproved road
Interstate Route	U.S. Route
	State Route

THIS MAP COMPLIES WITH NATIONAL MAP ACCURACY STANDARDS  
FOR SALE BY U.S. GEOLOGICAL SURVEY, RESTON, VIRGINIA 22092  
AND BY THE STATE GEOLOGICAL SURVEY, URBANA, ILLINOIS 61801  
A FOLDER DESCRIBING TOPOGRAPHIC MAPS AND SYMBOLS IS AVAILABLE ON REQUEST

HEYWORTH, ILL.  
SW 1/4 LE ROY 15' QUADRANGLE  
N4015-W8852.5/7.5

1981

DMA 3264 IV SW-SERIES Y863