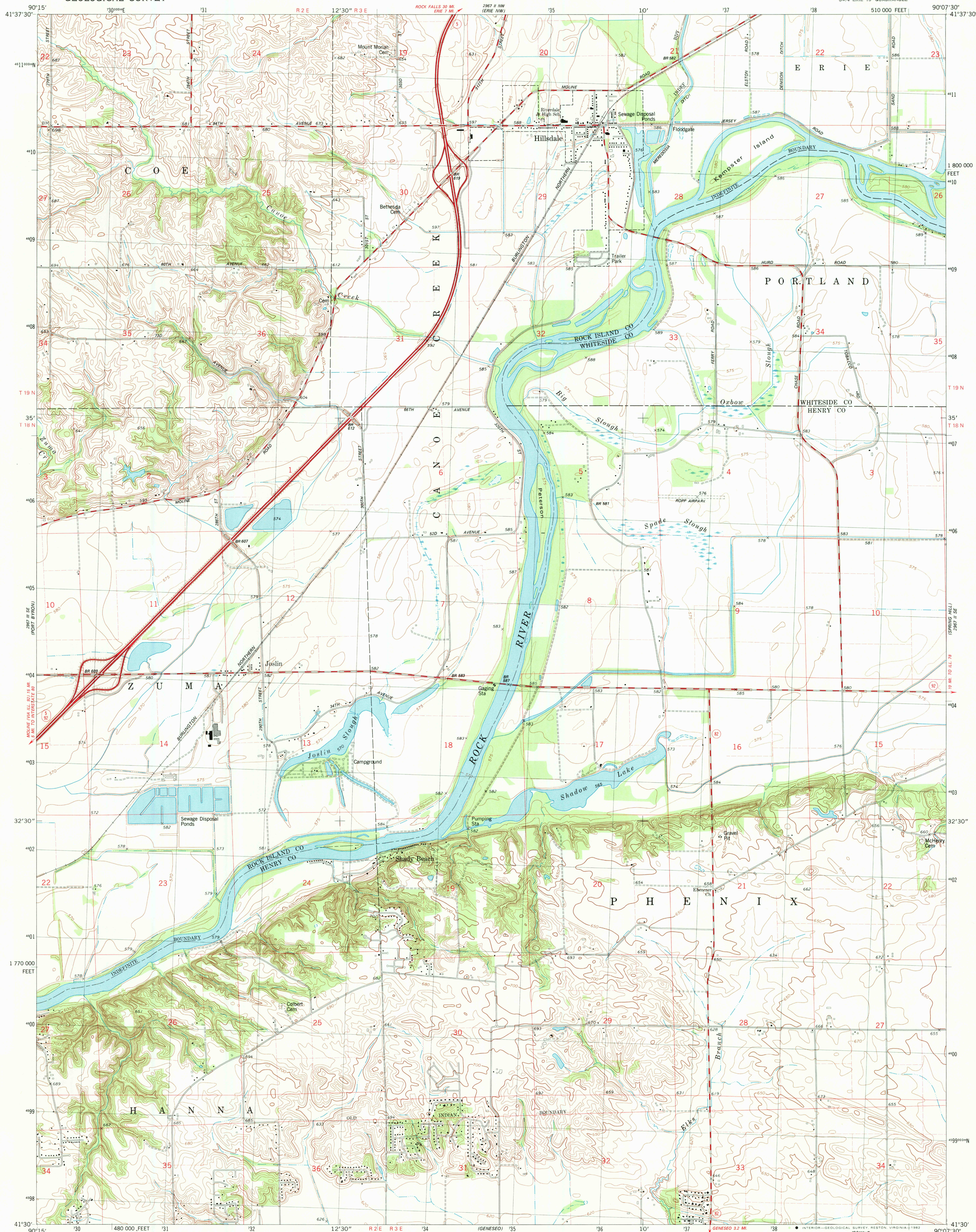


UNITED STATES  
DEPARTMENT OF THE INTERIOR  
GEOLOGICAL SURVEY

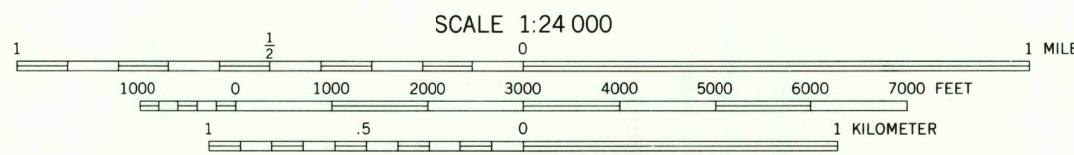
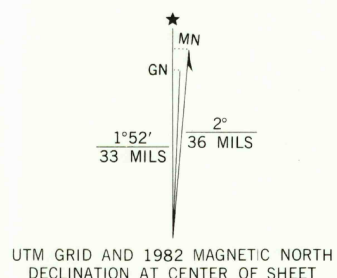
HILLSDALE QUADRANGLE  
ILLINOIS  
7.5 MINUTE SERIES (TOPOGRAPHIC)

SW 1/4 ERIE 15' QUADRANGLE



Mapped, edited, and published by the Geological Survey

Control by USGS and NOS/NOAA  
Topography by photogrammetric methods from aerial photographs taken 1979-80. Field checked 1980. Map edited 1982  
Projection and 10,000-foot grid ticks: Illinois coordinate system, west zone (transverse Mercator)  
1000-meter Universal Transverse Mercator grid, zone 15  
1927 North American Datum  
To place on the predicted North American Datum: 1983  
move the projection lines 2 meters north and  
10 meters east as shown by dashed corner ticks  
Fine red dashed lines indicate selected fence and field lines where generally visible on aerial photographs. This information is unchecked



THIS MAP COMPLIES WITH NATIONAL MAP ACCURACY STANDARDS  
FOR SALE BY U. S. GEOLOGICAL SURVEY, RESTON, VIRGINIA 22092  
AND BY THE STATE GEOLOGICAL SURVEY, CHAMPAIGN, ILLINOIS 61820  
A FOLDER DESCRIBING TOPOGRAPHIC MAPS AND SYMBOLS IS AVAILABLE ON REQUEST



ROAD CLASSIFICATION  
Primary highway, hard surface  
Secondary highway, hard surface  
Unimproved road  
Interstate Route  
U. S. Route  
State Route

HILLSDALE, ILL.  
SW 1/4 ERIE 15' QUADRANGLE  
N4130-W9007.5/7.5

1982

DMA 2967 II SW-SERIES V863

FEB 20 1983

2450