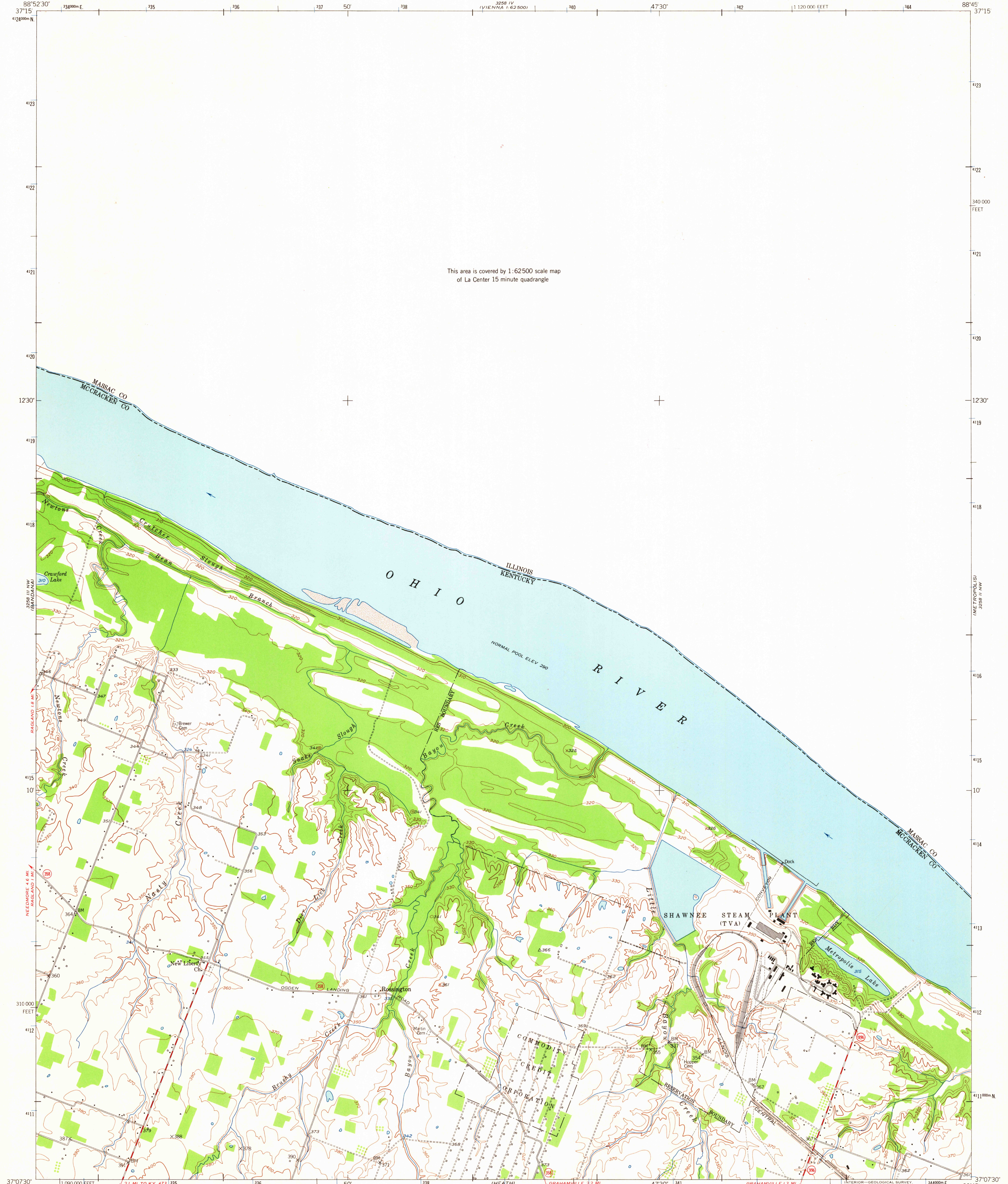
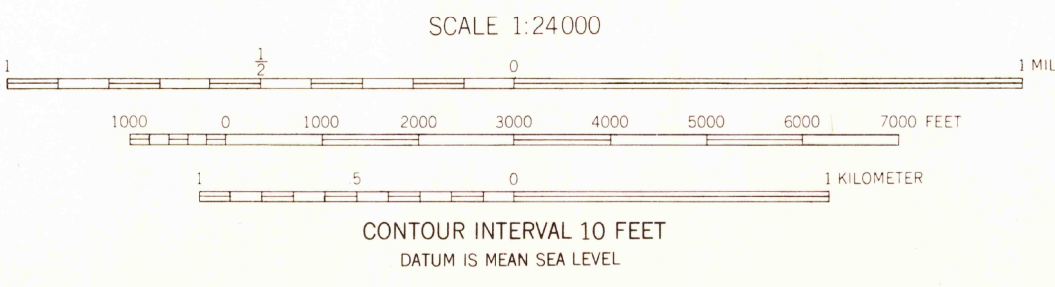
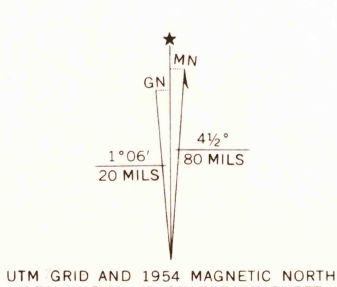


This area is covered by 1:62500 scale map
of La Center 15 minute quadrangle



Mapped, edited, and published by the Geological Survey
Control by USGS, USC&GS, and TVA
Culture and drainage in part compiled from aerial photographs
taken 1952. Topography by plane-table surveys 1954
Polyconic projection. 1927 North American datum
10,000-foot grid based on Kentucky coordinate system,
south zone
1000-meter Universal Transverse Mercator grid ticks,
zone 16, shown in blue



USGS
Historical File
Topographic Division

ROAD CLASSIFICATION
Medium-duty ——— Light-duty ———
Unimproved dirt ———
State Route



THIS MAP COMPLIES WITH NATIONAL MAP ACCURACY STANDARDS
FOR SALE BY U. S. GEOLOGICAL SURVEY, WASHINGTON 25, D. C.
KENTUCKY GEOLOGICAL SURVEY, LEXINGTON, KENTUCKY,
AND KENTUCKY DEPARTMENT OF COMMERCE, FRANKFORT, KENTUCKY
A FOLDER DESCRIBING TOPOGRAPHIC MAPS AND SYMBOLS IS AVAILABLE ON REQUEST

JOPPA, ILL.-KY.
NE/4 LA CENTER 15' QUADRANGLE
N3707.5—W8845/7.5
1954
AMS 3258 III NE—SERIES V853

MAR 26 1954
1725