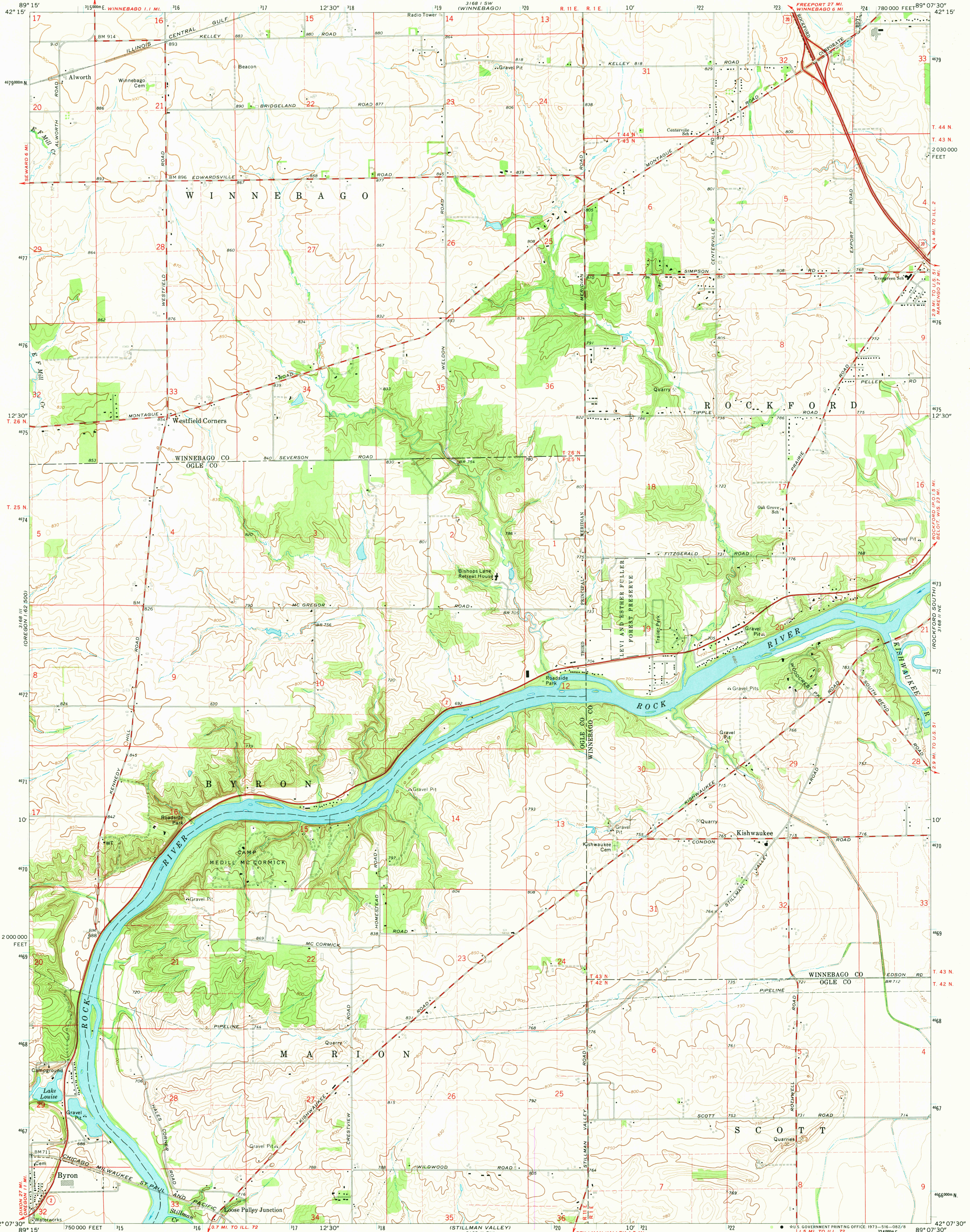


UNITED STATES
DEPARTMENT OF THE INTERIOR
GEOLOGICAL SURVEY

KISHWAUKEE QUADRANGLE
ILLINOIS
7.5 MINUTE SERIES (TOPOGRAPHIC)



Mapped, edited, and published by the Geological Survey
Control by USGS and USC&GS
Topography by photogrammetric methods from aerial
photographs taken 1970. Field checked 1971.
Polyconic projection. 1927 North American datum
10,000-foot grid based on Illinois coordinate system, west zone
1000-meter Universal Transverse Mercator grid ticks,
zone 16, shown in blue
Fine red dashed lines indicate selected fence and field lines where
generally visible on aerial photographs. This information is unchecked

UTM GRID AND 1971 MAGNETIC NORTH
DECLINATION AT CENTER OF SHEET
1° 28' 26" M
26° 15' 44" M

SCALE 1:24 000
CONTOUR INTERVAL 10 FEET
DOTTED LINES REPRESENT 5-FOOT CONTOURS
DATUM IS MEAN SEA LEVEL

THIS MAP COMPLIES WITH NATIONAL MAP ACCURACY STANDARDS
FOR SALE BY U.S. GEOLOGICAL SURVEY, WASHINGTON, D. C. 20242
AND BY THE GEOLOGICAL SURVEY, URBANA, ILLINOIS 61801
A FOLDER DESCRIBING TOPOGRAPHIC MAPS AND SYMBOLS IS AVAILABLE ON REQUEST



ROAD CLASSIFICATION
Primary highway, hard surface
Secondary highway, hard surface
Unimproved road
Interstate Route
U.S. Route
State Route

KISHWAUKEE, ILL.
NW 1/4 KINGS 15' QUADRANGLE
N4207.5-W8907.5/7.5

1971

AMS 3168 II NW-SERIES V863

SEP 11 1973

Hoan
3500
50 plane