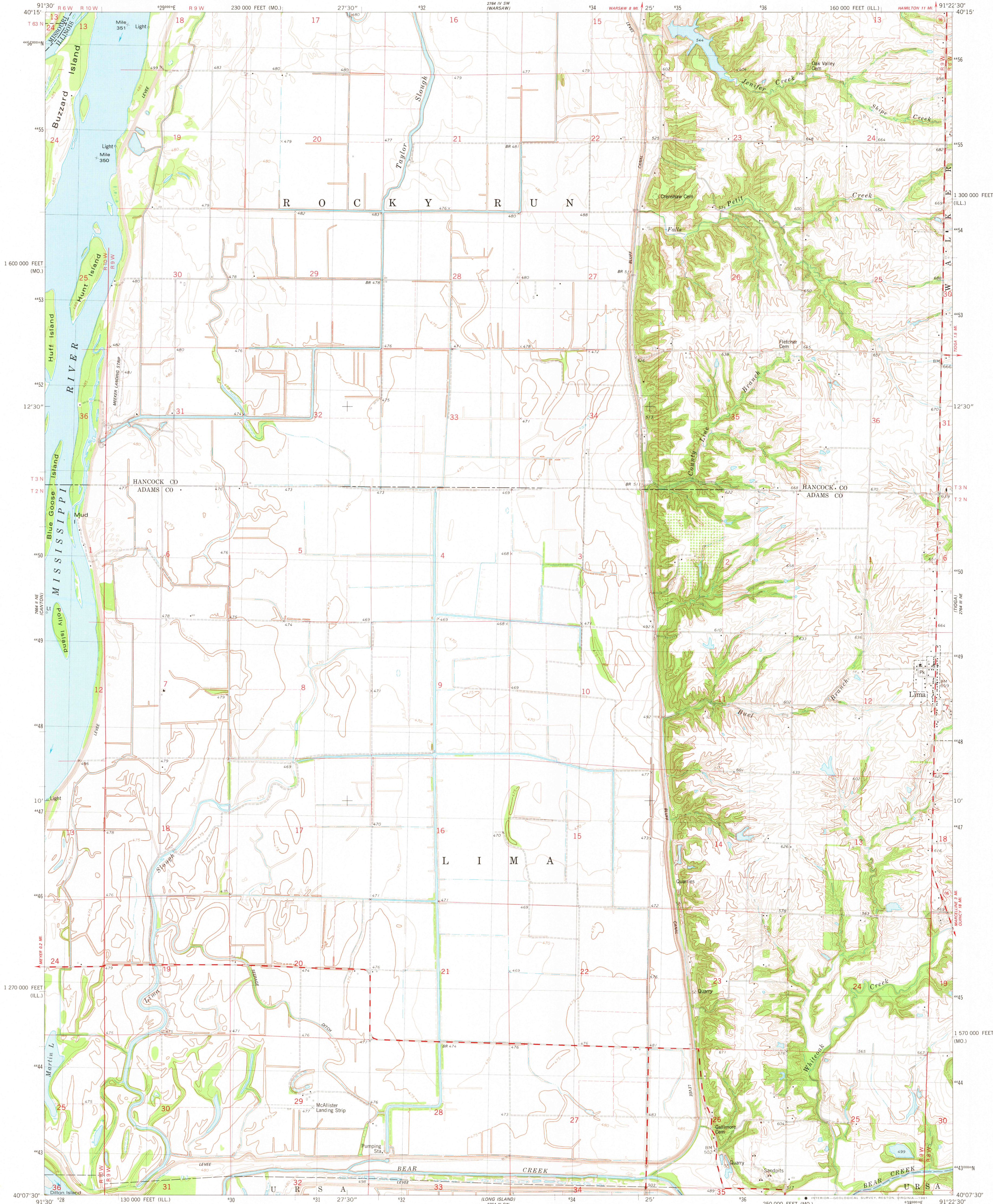


UNITED STATES  
DEPARTMENT OF THE INTERIOR  
GEOLOGICAL SURVEY

LIMA QUADRANGLE  
ILLINOIS-MISSOURI  
7.5 MINUTE SERIES (TOPOGRAPHIC)  
NW 1/4 MENDON 15' QUADRANGLE



Maped, edited, and published by the Geological Survey  
Control by USGS and NOS/NOAA

Topography by photogrammetric methods from aerial photographs  
taken 1974. Field checked 1976. Map edited 1981

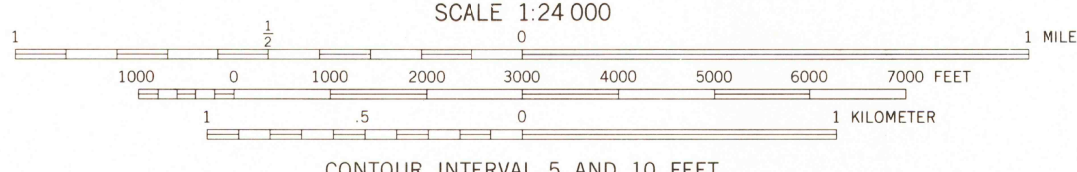
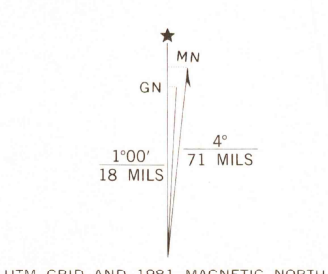
Projection: Illinois coordinate system, west zone  
(transverse Mercator)

10,000-foot grid ticks based on Illinois coordinate system,  
west zone and Missouri coordinate system, east zone

1000-meter Universal Transverse Mercator grid, zone 15  
1927 North American datum

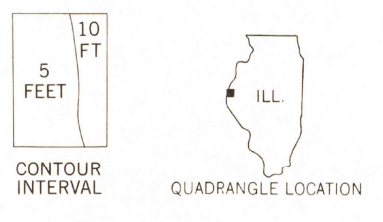
To place on the predicted North American Datum 1983  
move the projection lines 12 meters east as shown by  
dashed corner ticks

Fine red dashed lines indicate selected fence and field lines where  
generally visible on aerial photographs. This information is unchecked



CONTOUR INTERVAL 5 AND 10 FEET  
NATIONAL GEODETIC VERTICAL DATUM OF 1929  
THIS MAP COMPLIES WITH NATIONAL MAP ACCURACY STANDARDS  
FOR SALE BY U. S. GEOLOGICAL SURVEY, DENVER, COLORADO 80225, OR RESTON, VIRGINIA 22092,  
STATE GEOLOGICAL SURVEY, URBANA, ILLINOIS 61801,  
AND THE DIVISION OF GEOLOGY AND LAND SURVEY,  
MISSOURI DEPARTMENT OF NATURAL RESOURCES, ROLLA, MISSOURI 65401  
A FOLDER DESCRIBING TOPOGRAPHIC MAPS AND SYMBOLS IS AVAILABLE ON REQUEST

ROAD CLASSIFICATION  
Primary highway, hard surface  
Secondary highway, hard surface  
Unimproved road  
Interstate Route  
U. S. Route  
State Route  
Light-duty road, hard or improved surface  
Unimproved road  
Interstate Route  
U. S. Route  
State Route



LIMA, ILL.-MO.  
NW 1/4 MENDON 15' QUADRANGLE  
N4007.5-W9122.5/7.5

1981  
DMA 2764 III NW SERIES V863

JUN 29 1981  
2500  
JUN 29 1981