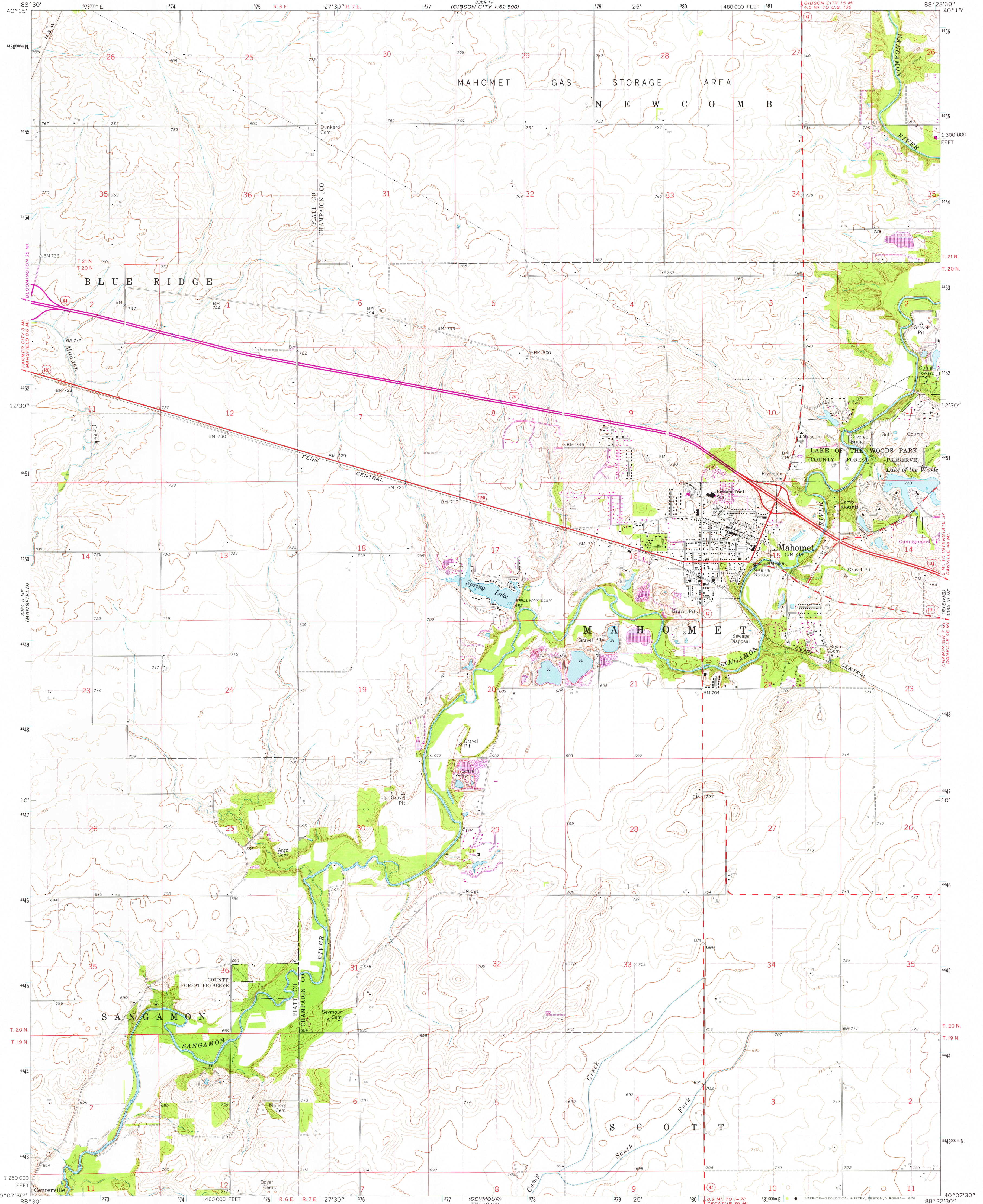


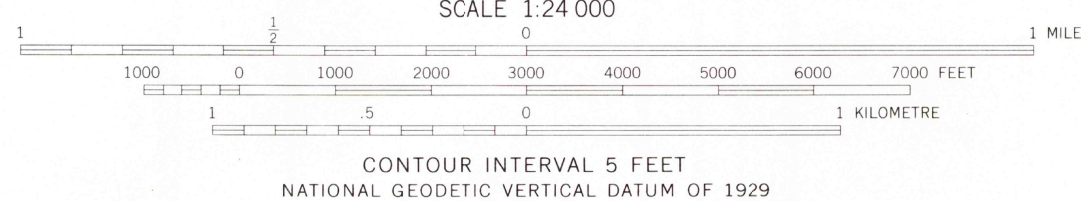
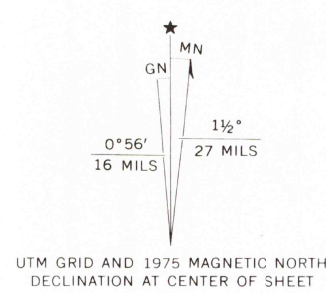
UNITED STATES
DEPARTMENT OF THE INTERIOR
GEOLOGICAL SURVEY

STATE OF ILLINOIS
DEPARTMENT OF REGISTRATION AND EDUCATION
GEOLOGICAL SURVEY DIVISION
URBANA, ILLINOIS

MAHOMET QUADRANGLE
ILLINOIS
7.5 MINUTE SERIES (TOPOGRAPHIC)
NW/4 MAHOMET 15' QUADRANGLE



Mapped, edited, and published by the Geological Survey
Control by USGS and USC&GS
Topography by photogrammetric methods from aerial
photographs taken 1967. Field checked 1970
Soundings compiled from charts furnished by
Illinois Department of Conservation
Polyconic projection. 1927 North American datum
10,000-foot grid based on Illinois coordinate system, east zone
1000-metre Universal Transverse Mercator grid ticks,
zone 16, shown in blue
Fine red dashed lines indicate selected fence and field lines where
generally visible on aerial photographs. This information is unchecked
Revisions shown in purple compiled from aerial photographs
taken 1975. This information not field checked



ROAD CLASSIFICATION
Primary highway, all weather, Light-duty road, all weather,
hard surface Improved surface
Secondary highway, all weather, Unimproved road, fair or dry
hard surface weather
Interstate Route U. S. Route State Route

USGS
Historical File
Topographic Division

MAHOMET, ILL.
NW/4 MAHOMET 15' QUADRANGLE
N4007.5-W8822.5/7.5
1970
PHOTOREVISED 1975
AMS 3364 III NW-SERIES V863

JAN 19 1977

3275