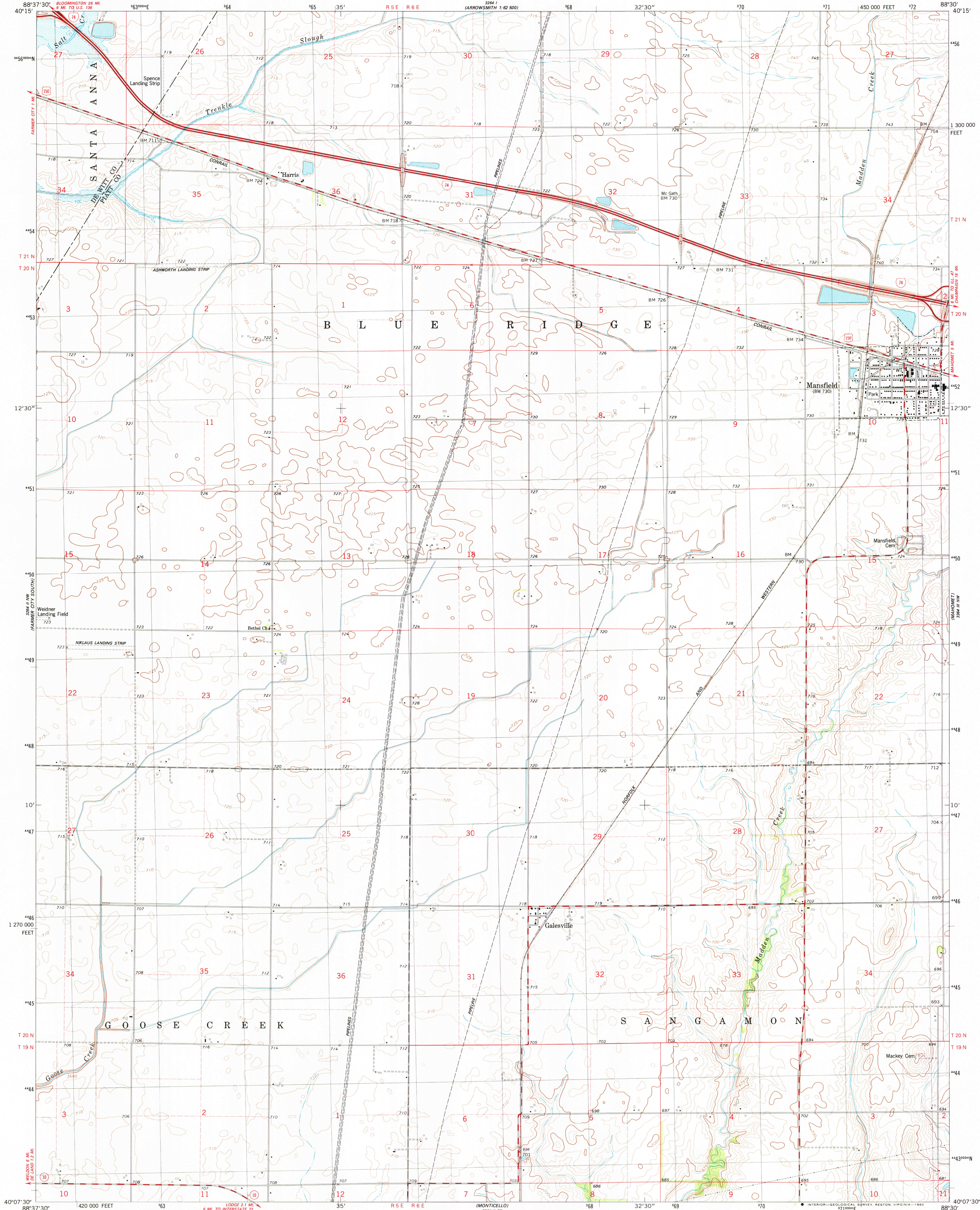


UNITED STATES
DEPARTMENT OF THE INTERIOR
GEOLOGICAL SURVEY

MANSFIELD QUADRANGLE
ILLINOIS
7.5 MINUTE SERIES (TOPOGRAPHIC)
NE 1/4 MONTICELLO 15' QUADRANGLE



Mapped, edited, and published by the Geological Survey

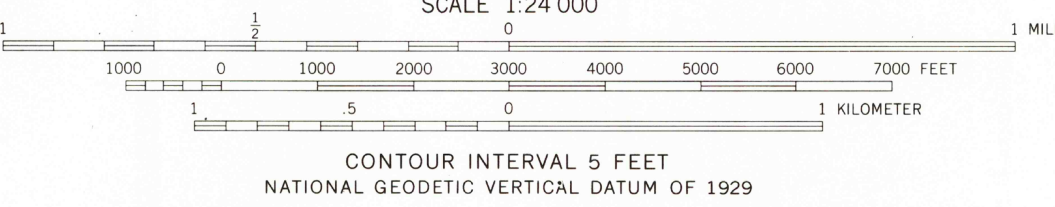
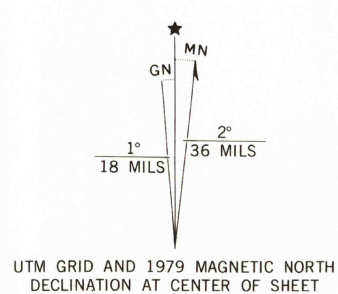
Control by USGS and NOS/NOAA

Topography by photogrammetric methods from aerial photographs taken 1973. Field checked 1975. Map edited 1979

Projection and 10,000-foot grid ticks: Illinois coordinate system, east zone (transverse Mercator)
1000-meter Universal Transverse Mercator grid, zone 16
1927 North American datum

Areas covered by dashed light-blue pattern are subject to controlled inundation by Lake Clinton

Fine red dashed lines indicate selected fence and field lines where generally visible on aerial photographs. This information is unchecked



THIS MAP COMPLIES WITH NATIONAL MAP ACCURACY STANDARDS
FOR SALE BY U. S. GEOLOGICAL SURVEY, RESTON, VIRGINIA 22092
AND BY THE STATE GEOLOGICAL SURVEY, URBANA, ILLINOIS 61801
A FOLDER DESCRIBING TOPOGRAPHIC MAPS AND SYMBOLS IS AVAILABLE ON REQUEST



ROAD CLASSIFICATION	
Primary highway, hard surface	Light-duty road, hard or improved surface
Secondary highway, hard surface	Unimproved road
Interstate Route	U. S. Route
	State Route

USGS
Historical File
Topographic Division

MANSFIELD, ILL.
NE 1/4 MONTICELLO 15' QUADRANGLE
N4007.5-W8830/7.5

1979

DMA 3264 II NE-SERIES V863

MAY 20 1980

1600