

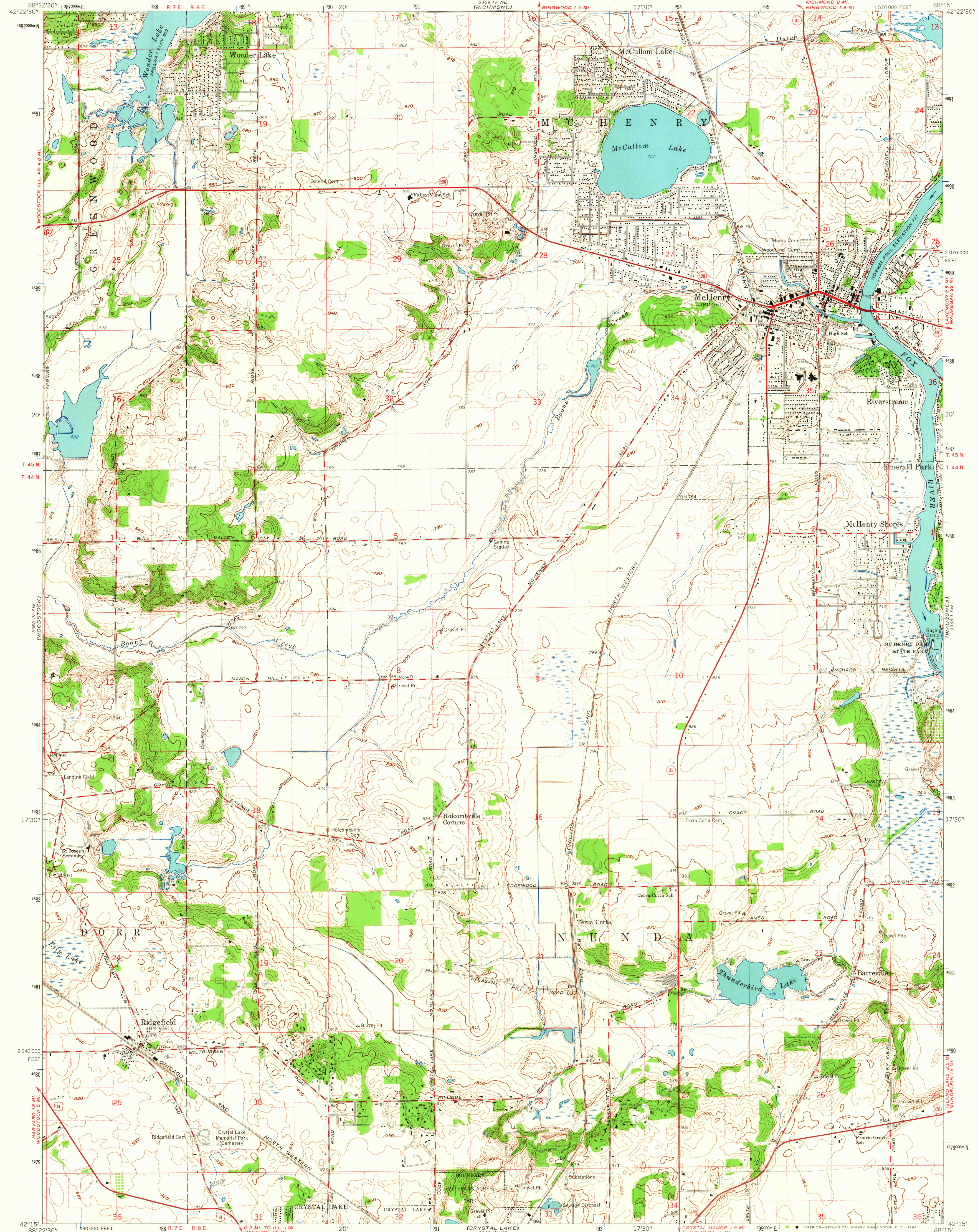
3368 IV SW  
(WILSON)

UNITED STATES  
DEPARTMENT OF THE INTERIOR  
GEOLOGICAL SURVEY

STATE OF ILLINOIS  
DEPARTMENT OF REGISTRATION AND EDUCATION  
GEOLOGICAL SURVEY DIVISION  
URBANA, ILLINOIS  
(RICHMOND)

MC HENRY QUADRANGLE  
ILLINOIS-MCHENRY CO.  
7.5 MINUTE SERIES (TOPOGRAPHIC)

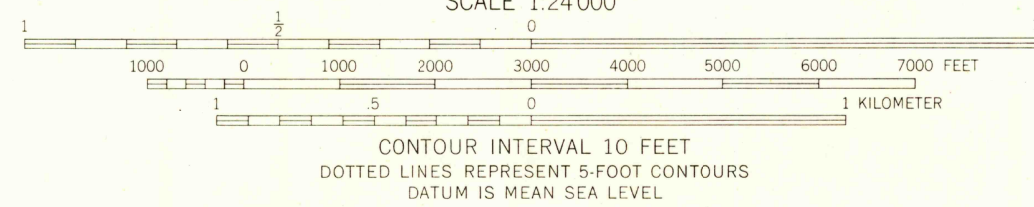
3368 I NW  
(FOX LAKE)



3368 IV SW  
(WILSON)

Mapped, edited, and published by the Geological Survey  
Control by USGS and USC&GS  
Topography by photogrammetric methods from aerial  
photographs taken 1961. Field checked 1963  
Polyconic projection. 1927 North American datum  
10,000-foot grid based on Illinois coordinate system, east zone  
1000-meter Universal Transverse Mercator grid ticks,  
zone 16, shown in blue  
Fine red dashed lines indicate selected fence and field lines where  
generally visible on aerial photographs. This information is unchecked

UTM GRID AND 1963 MAGNETIC NORTH  
DECLINATION AT CENTER OF SHEET



THIS MAP COMPLIES WITH NATIONAL MAP ACCURACY STANDARDS  
FOR SALE BY U. S. GEOLOGICAL SURVEY, WASHINGTON 25, D. C.  
AND BY THE STATE GEOLOGICAL SURVEY, URBANA, ILLINOIS  
A FOLDER DESCRIBING TOPOGRAPHIC MAPS AND SYMBOLS IS AVAILABLE ON REQUEST

USGS  
Historical File  
Topographic Division



ROAD CLASSIFICATION  
Heavy-duty ——— Light-duty ———  
Medium-duty ——— Unimproved dirt ———  
U. S. Route ——— State Route ———

U.S.G.S.  
FILE COPY  
TOPOGRAPHIC DIVISION

MC HENRY, ILL.  
SE/4 MC HENRY 15' QUADRANGLE  
N4215—W815/7.5  
1963  
AMS 3368 IV SE—SERIES V863

NOV 23 1964

3145