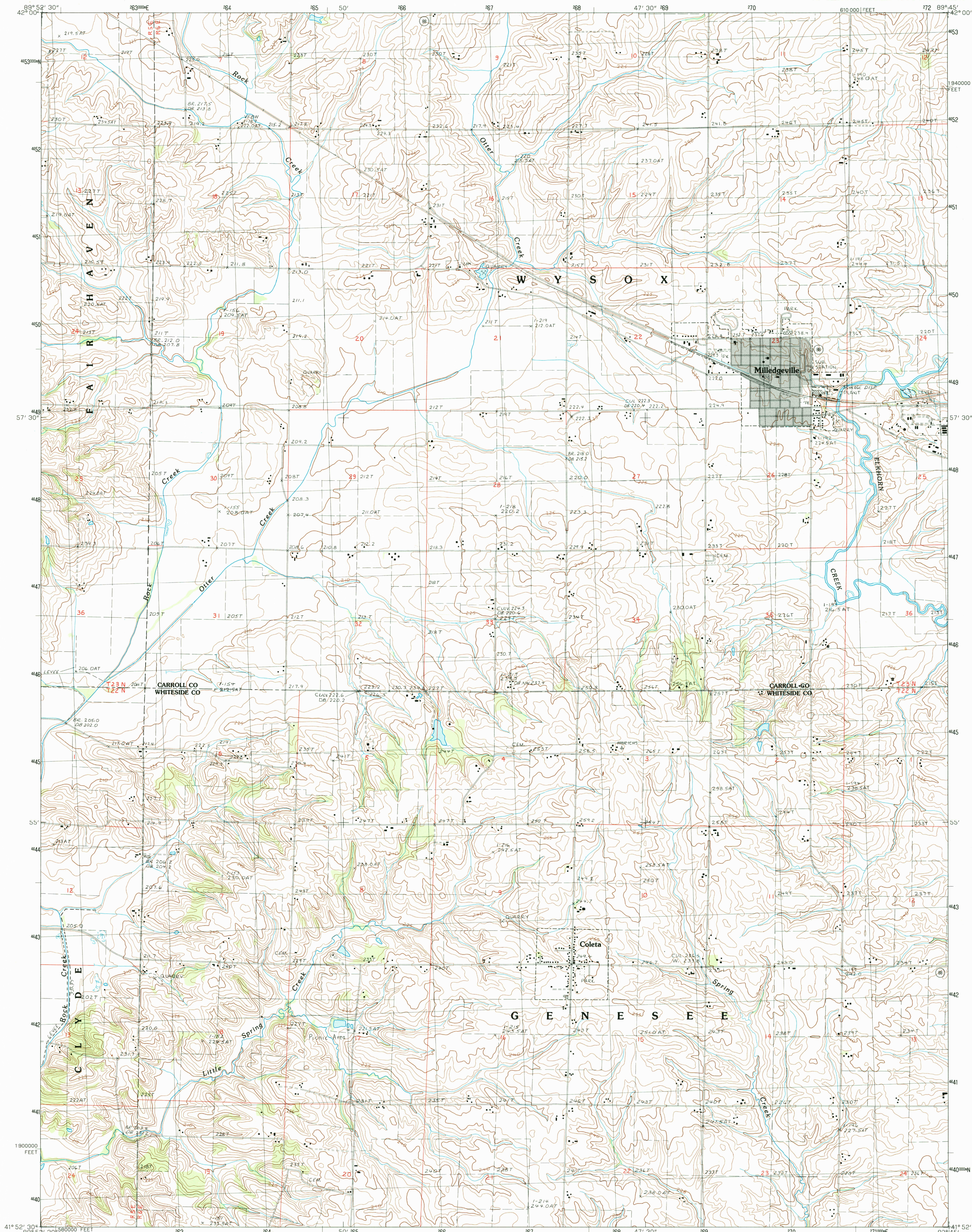


UNITED STATES  
DEPARTMENT OF THE INTERIOR  
GEOLOGICAL SURVEY

MILLEDGEVILLE QUADRANGLE  
ILLINOIS  
7.5 MINUTE SERIES (TOPOGRAPHIC)



PRODUCED BY THE UNITED STATES GEOLOGICAL SURVEY  
CONTROL BY: USGS AND NOS/NOAA  
COMPILED FROM AERIAL PHOTOGRAPHS TAKEN IN 1981  
FIELD CHECKED: 1982 MAP EDITED: 1985  
PROJECTION: UNIVERSAL TRANSVERSE MERCATOR  
GRID: 1000-METER UNIVERSAL TRANSVERSE MERCATOR  
ZONE: 16  
1000-METER STATE GRID TICKS: ILLINOIS WEST ZONE  
UTM GRID DECLINATION: 15° WEST  
1984 MAGNETIC NORTH DECLINATION: 1° 30' EAST  
VERTICAL DATUM: NATIONAL GEODETIC DATUM OF 1929  
HORIZONTAL DATUM: 1927 NORTH AMERICAN DATUM  
To place on the predicted North American Datum of 1983,  
move the projection lines as shown by dashed corner ticks  
(3 meters north and 9 meters east)  
There may be private inholdings within the boundaries of any  
Federal and State Reservations shown on this map.  
No distinction made between houses, barns, and other buildings  
Gray tint indicates area in which selected buildings are shown

PROVISIONAL MAP  
Produced from original  
manuscript drawings. Informa-  
tion shown as of date of  
photography.

SCALE 1:24 000  
KILOMETERS  
METERS  
MILES  
FOOT  
CONTOUR INTERVAL 3 METERS  
CONTROL AND FIELD ESTABLISHED ELEVATIONS SHOWN TO THE NEAREST 0.1 METER  
OTHER ELEVATIONS SHOWN TO THE NEAREST 0.5 METER  
To convert meters to feet multiply by 3.2808  
To convert feet to meters multiply by 0.3048  
THIS MAP COMPLIES WITH NATIONAL MAP ACCURACY STANDARDS  
FOR SALE BY U.S. GEOLOGICAL SURVEY, RESTON, VIRGINIA 22092  
AND THE STATE GEOLOGICAL SURVEY, CHAMPAIGN, ILLINOIS 61820

QUADRANGLE LOCATION							
1	2	3	4	5	6	7	8
1	2	3	4	5	6	7	8
1	2	3	4	5	6	7	8
1	2	3	4	5	6	7	8
1	2	3	4	5	6	7	8
1	2	3	4	5	6	7	8
1	2	3	4	5	6	7	8

CONTOURS AND ELEVATIONS IN METERS  
ROAD LEGEND  
Improved Road  
Unimproved Road  
Trail  
Interstate Route  
U.S. Route  
State Route  
MILLEDGEVILLE, ILLINOIS  
PROVISIONAL EDITION 1985  
41089-H7-TM-024

USGS MAP HISTORICAL MAP  
JUN 2 1986  
REC'D FILE COPY