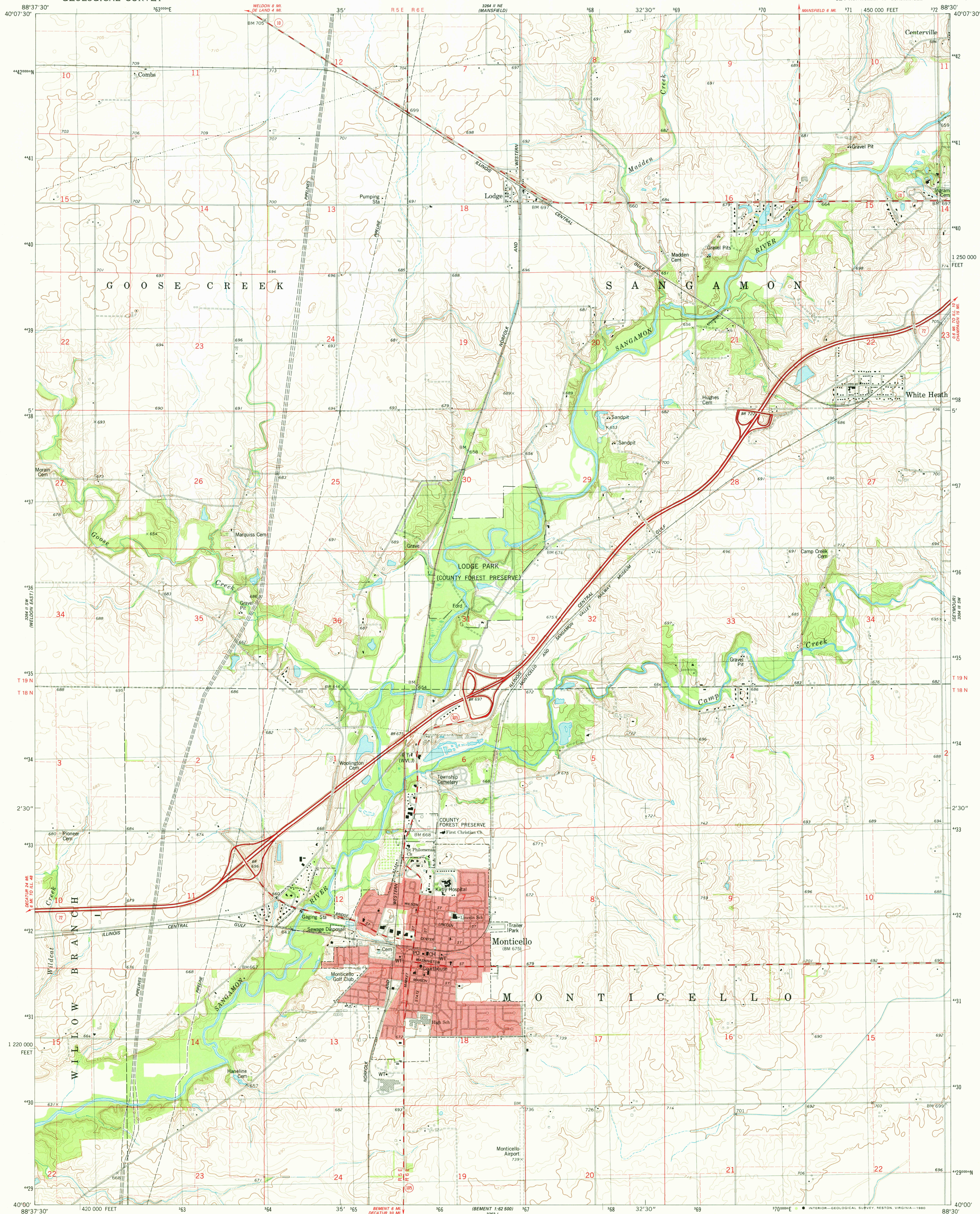


UNITED STATES
DEPARTMENT OF THE INTERIOR
GEOLOGICAL SURVEY

MONTICELLO QUADRANGLE
ILLINOIS-PIATT CO.
7.5 MINUTE SERIES (TOPOGRAPHIC)
SE/4 MONTICELLO 15' QUADRANGLE



Mapped, edited, and published by the Geological Survey

Control by USGS and NOS/NOAA

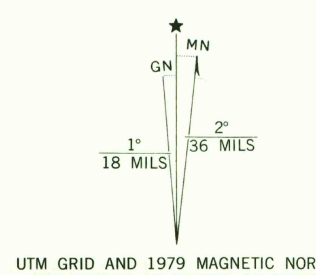
Topography by photogrammetric methods from aerial photographs taken 1973. Field checked 1975. Map edited 1979

Projection and 10,000-foot grid ticks: Illinois coordinate system, east zone (transverse Mercator)

1000-meter Universal Transverse Mercator grid, zone 16 1927 North American datum

Red tint indicates area in which only landmark buildings are shown

Fine red dashed lines indicate selected fence and field lines where generally visible on aerial photographs. This information is unchecked



SCALE 1:24 000

CONTOUR INTERVAL 5 FEET
NATIONAL GEODETIC VERTICAL DATUM OF 1929

THIS MAP COMPLIES WITH NATIONAL MAP ACCURACY STANDARDS
FOR SALE BY U. S. GEOLOGICAL SURVEY, RESTON, VIRGINIA 22092
AND BY THE STATE GEOLOGICAL SURVEY, URBANA, ILLINOIS 61801
A FOLDER DESCRIBING TOPOGRAPHIC MAPS AND SYMBOLS IS AVAILABLE ON REQUEST

ROAD CLASSIFICATION

Primary highway, hard surface
Secondary highway, hard surface
Light-duty road, hard or improved surface
Unimproved road
Interstate Route
U. S. Route
State Route



MONTICELLO, ILL.
SE/4 MONTICELLO 15' QUADRANGLE
N4000-W8830/7.5

1979

DMA 3264 II SE-SERIES V863

MAY 12 1980

1800