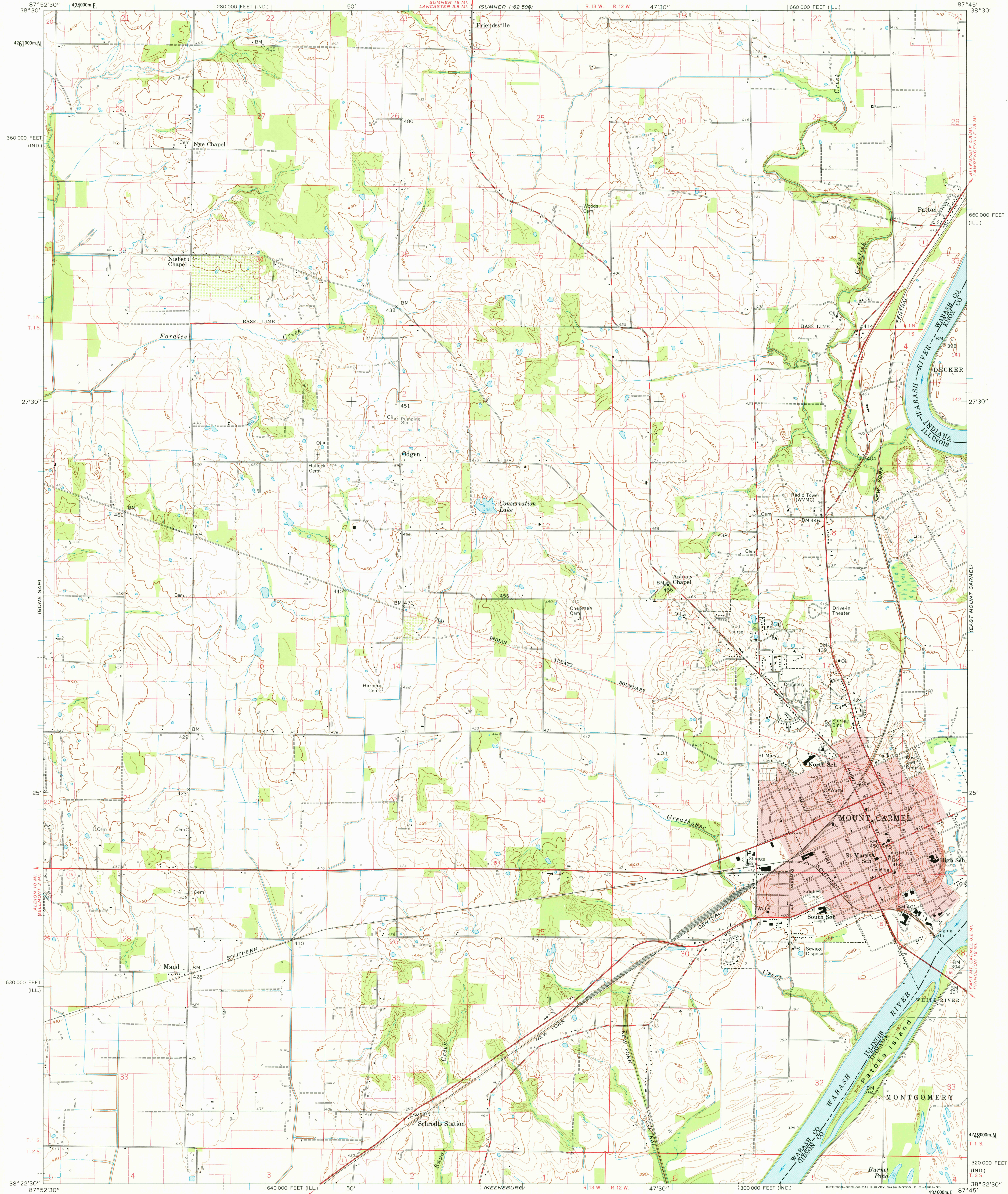


UNITED STATES
DEPARTMENT OF THE INTERIOR
GEOLOGICAL SURVEY

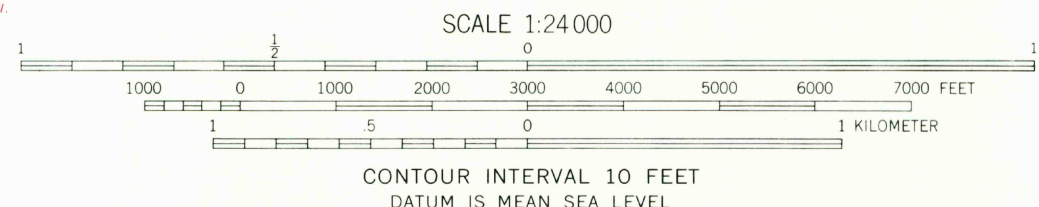
STATE OF ILLINOIS
WILLIAM G. STRATTON, GOVERNOR
DEPARTMENT OF REGISTRATION AND EDUCATION
VERA M. BINKS, DIRECTOR
GEOLOGICAL SURVEY DIVISION, JOHN C. FRYE, CHIEF
URBANA, ILLINOIS

MOUNT CARMEL QUADRANGLE
ILLINOIS-INDIANA
7.5 MINUTE SERIES (TOPOGRAPHIC)
NE/4 MOUNT CARMEL 15' QUADRANGLE



Mapped, edited, and published by the Geological Survey
Control by USGS and USC&GS
Culture and drainage in part compiled from aerial photographs
taken 1958. Topography by planetable surveys 1959
Polyconic projection. 1927 North American datum
10,000-foot grid based on Illinois coordinate system, east zone
and Indiana coordinate system, west zone.
1000-meter Universal Transverse Mercator grid ticks,
zone 16, shown in blue
Fine red dashed lines indicate selected fence and field lines where
generally visible on aerial photographs. This information is unchecked
Red tint indicates area in which only landmark buildings are shown
All wells shown are oil wells

TRUE NORTH
MAGNETIC NORTH
APPROXIMATE MEAN
DECLINATION, 1959



THIS MAP COMPLIES WITH NATIONAL MAP ACCURACY STANDARDS
FOR SALE BY U.S. GEOLOGICAL SURVEY, WASHINGTON 25, D. C.
INDIANA DEPARTMENT OF CONSERVATION, INDIANAPOLIS, INDIANA
AND BY THE STATE GEOLOGICAL SURVEY, URBANA, ILLINOIS.
A FOLDER DESCRIBING TOPOGRAPHIC MAPS AND SYMBOLS IS AVAILABLE ON REQUEST



ROAD CLASSIFICATION
Heavy-duty ——— Light-duty ———
Medium-duty ——— Unimproved dirt ———
○ State Route
MOUNT CARMEL, ILL.-IND.
NE/4 MOUNT CARMEL 15' QUADRANGLE
USGS N3822.5-W8745.7.5
Historical File
Topographic Division 1959

JUL 20 1977

1300