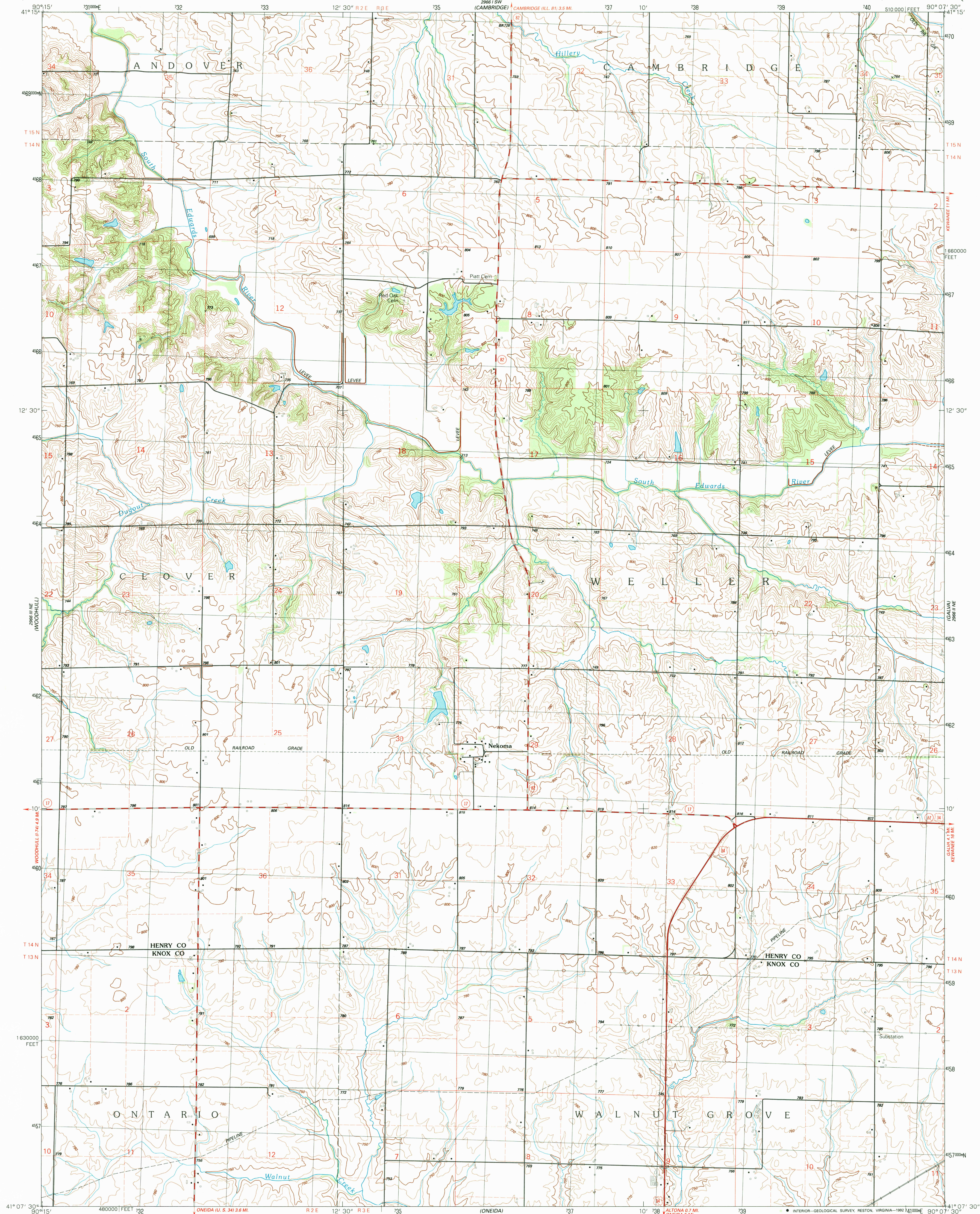


2666 I SW
(ANDOVER)

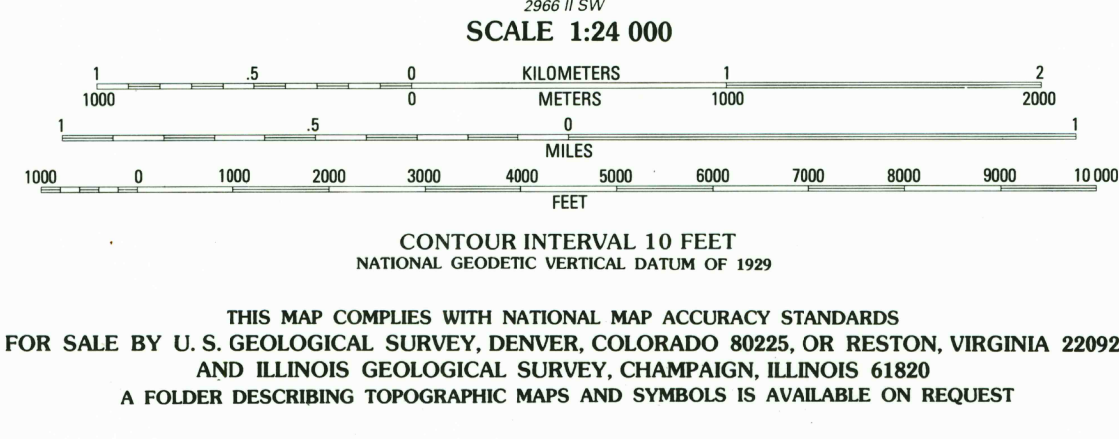
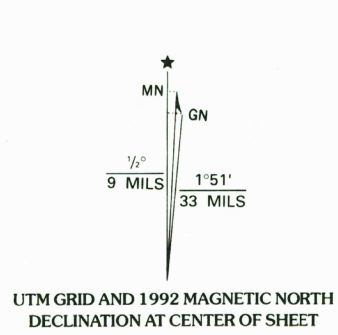
UNITED STATES
DEPARTMENT OF THE INTERIOR
GEOLOGICAL SURVEY

NEKOMA QUADRANGLE
ILLINOIS
7.5 MINUTE SERIES (TOPOGRAPHIC)
NW/4 GALVA 15' QUADRANGLE

2666 I SE
(GERMAN CORNER)



Produced by the United States Geological Survey
Control by USGS and NOS/NOAA
Compiled from aerial photographs taken 1986
Field checked 1989. Map edited 1992
Projection and 10,000-foot grid ticks: Illinois coordinate system, west zone (transverse Mercator)
1000-meter Universal Transverse Mercator grid, zone 15
1927 North American Datum
The difference between 1927 North American Datum and North American Datum of 1983 (NAD 83) for 7.5-minute intersections is given in USGS Bulletin 1875. The NAD 83 is shown by dashed corner ticks
Fine red dashed lines indicate selected fence and field lines where generally visible on aerial photographs. This information is unchecked



ROAD CLASSIFICATION

Primary highway, hard surface	Light-duty road, hard or improved surface
Secondary highway, hard surface	Unimproved road
Interstate Route	U. S. Route
	State Route

ILLINOIS
QUADRANGLE LOCATION

USGS HISTORICAL MAP ARCHIVES
AUG 27 1992
REC'D FILE COPY

NEKOMA, ILL.
NW/4 GALVA 15' QUADRANGLE
41090-B2-TF-024
1992
DMA 2666 II NW-SERIES V863