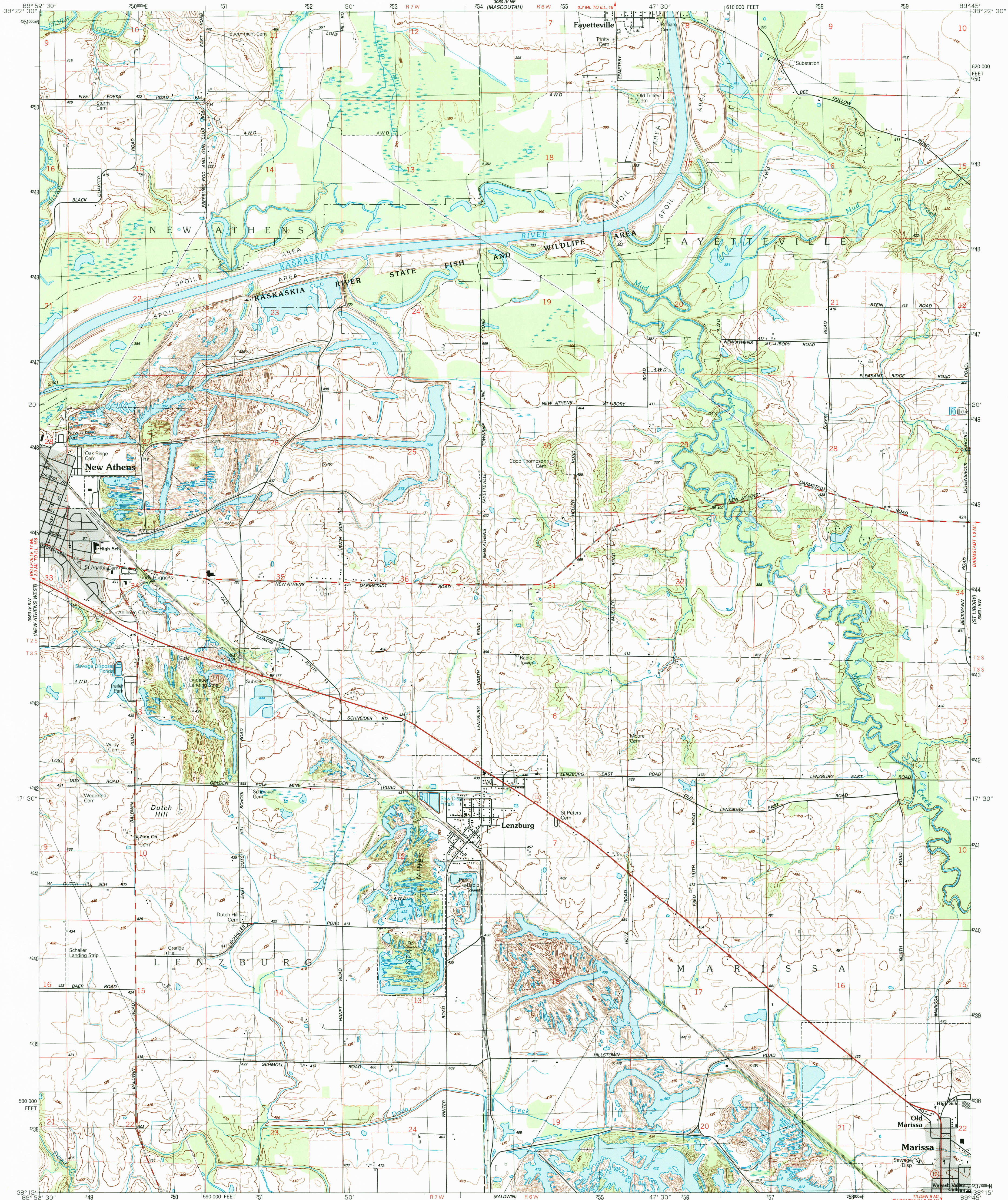


UNITED STATES
DEPARTMENT OF THE INTERIOR
GEOLOGICAL SURVEY

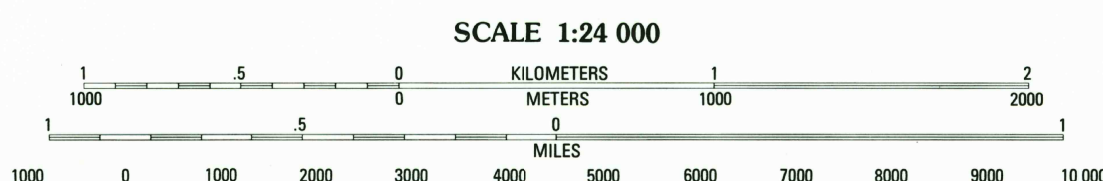
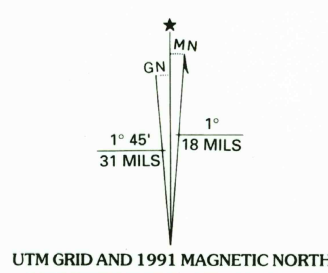
STATE OF ILLINOIS
DEPARTMENT OF ENERGY AND NATURAL RESOURCES
GEOLOGICAL SURVEY DIVISION
CHAMPAIGN, ILLINOIS

NEW ATHENS EAST QUADRANGLE
ILLINOIS-ST. CLAIR CO.
7.5 MINUTE SERIES (TOPOGRAPHIC)
SE/4 NEW ATHENS 15' QUADRANGLE



Produced by the United States Geological Survey
Control by USGS and NOS/NOAA

Topography by photogrammetric methods from aerial photographs taken 1986. Field checked 1988. Map edited 1991
Supersedes Army Map Service map dated 1982
Projection and 10,000-foot grid ticks: Illinois coordinate system, west zone (transverse Mercator)
1000-meter Universal Transverse Mercator grid, zone 16
1927 North American Datum
To place on the predicted North American Datum 1983, move the projection lines 2 meters south and 8 meters east as shown by dashed corner ticks
There may be private inholdings within the boundaries of the National or State reservations shown on this map
Gray tint indicates areas in which only landmark buildings are shown
Fine red dashed lines indicate selected fence and field lines where generally visible on aerial photographs. This information is unchecked



CONTOUR INTERVAL 10 FEET
NATIONAL GEODETIC VERTICAL DATUM OF 1929

THIS MAP COMPLIES WITH NATIONAL MAP ACCURACY STANDARDS
FOR SALE BY U. S. GEOLOGICAL SURVEY, DENVER, COLORADO 80225, OR RESTON, VIRGINIA 22092
AND ILLINOIS GEOLOGICAL SURVEY, CHAMPAIGN, ILLINOIS 61820
A FOLDER DESCRIBING TOPOGRAPHIC MAPS AND SYMBOLS IS AVAILABLE ON REQUEST



Primary highway, light-duty road, hard or hard surface improved surface
Secondary highway, hard surface Unimproved road
Interstate Route U. S. Route State Route

NEW ATHENS EAST, ILL.
SE/4 NEW ATHENS 15' QUADRANGLE
38089-C7-TF-024

1991

DMA 3060 IV SE-SERIES V863

