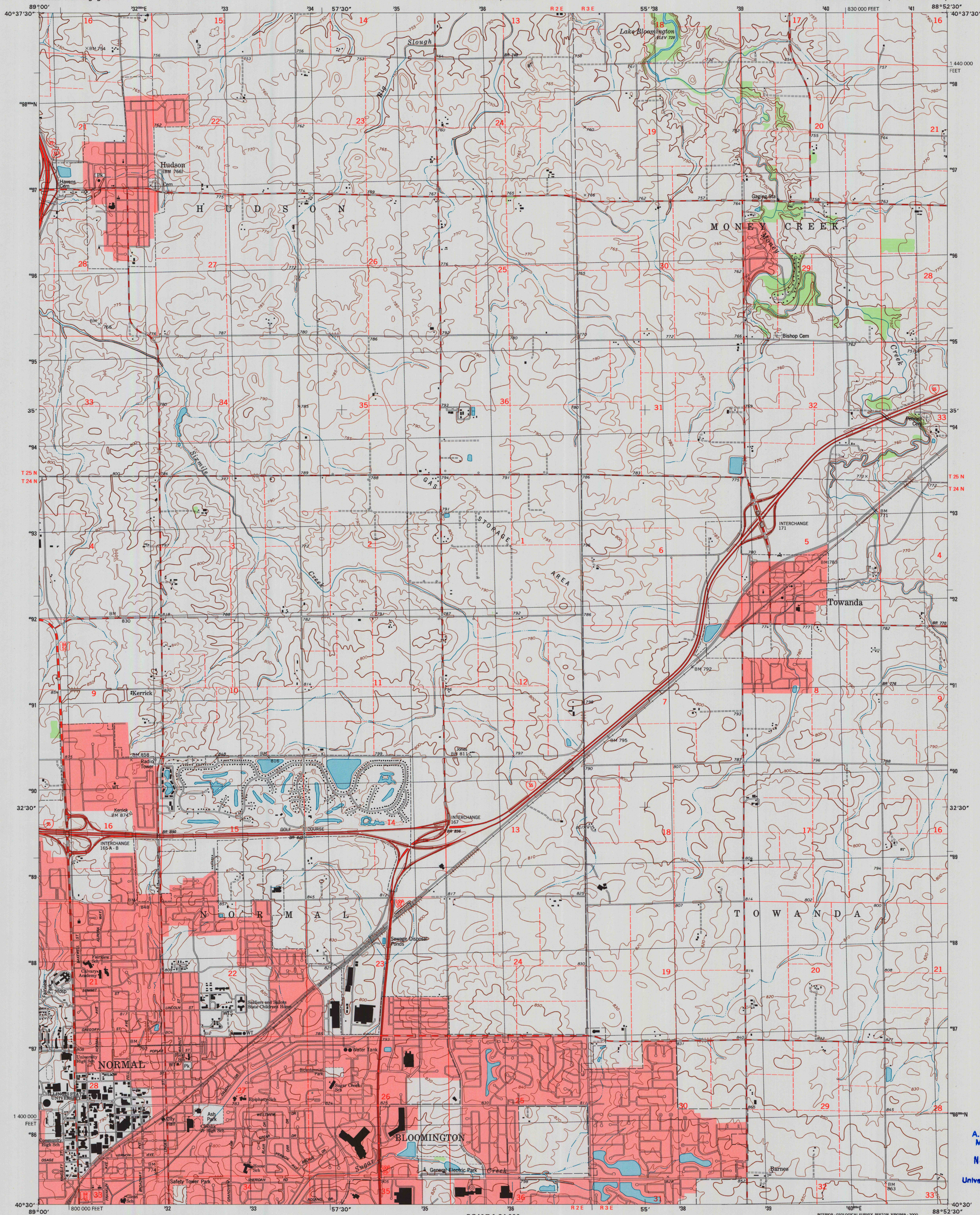




U.S. DEPARTMENT OF THE INTERIOR
U.S. GEOLOGICAL SURVEY

STATE OF ILLINOIS
DEPARTMENT OF TRANSPORTATION
DEPARTMENT OF NATURAL RESOURCES
SPRINGFIELD, ILLINOIS

NORMAL EAST QUADRANGLE
ILLINOIS-MC LEAN CO.
7.5-MINUTE SERIES (TOPOGRAPHIC)

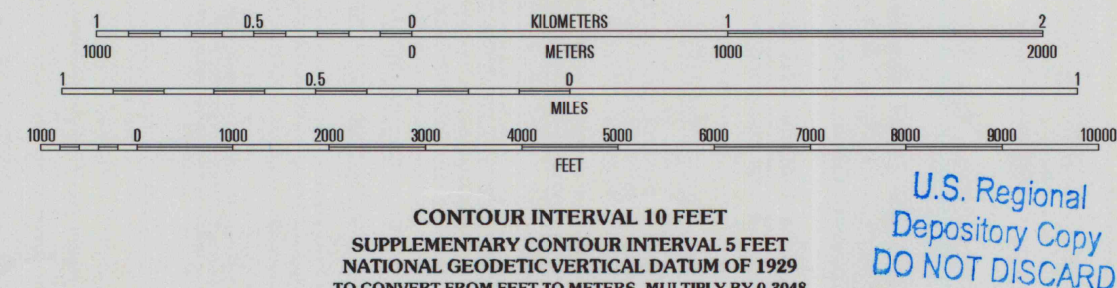
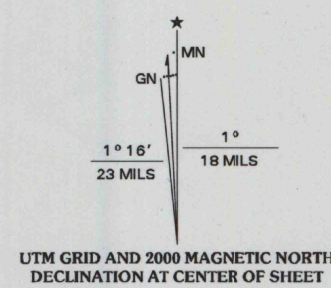


A.H. ROBINSON
MAP LIBRARY

NOV 9 2000

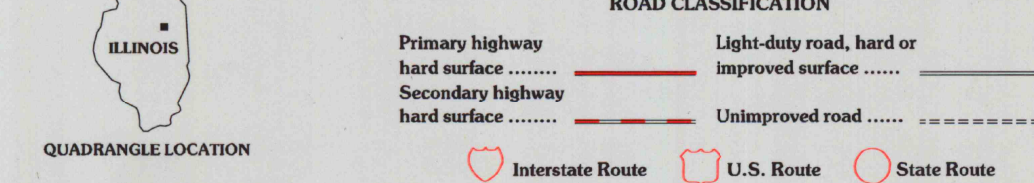
University of Wisconsin
Madison

Produced by the United States Geological Survey
in cooperation with Illinois Department of Transportation
and Illinois Department of Natural Resources
Topography compiled 1998. Planimetry derived from imagery
taken 1998 and other sources. Public Land Survey System and
survey control current as of 1978
North American Datum of 1983 (NAD 83). Projection and
1 000-meter grid: Universal Transverse Mercator, zone 16
10 000-foot ticks: Illinois Coordinate System of 1983 (east zone)
North American Datum of 1927 (NAD 27) is shown by dashed
corner ticks. The values of the shift between NAD 83 and
NAD 27 for 7.5-minute intersections are obtainable from
National Geodetic Survey NADCON software
City of Bloomington and Bloomington Township are coextensive
Landmark buildings verified 1978



SCALE 1:24 000
CONTOUR INTERVAL 10 FEET
SUPPLEMENTARY CONTOUR INTERVAL 5 FEET
NATIONAL GEODETIC VERTICAL DATUM OF 1929
TO CONVERT FROM FEET TO METERS, MULTIPLY BY 0.3048

U.S. Regional
Depository Copy
DO NOT DISCARD



QUADRANGLE LOCATION

| | | | |
|---|---|---|--------------------|
| 1 | 2 | 3 | 1 El Paso |
| 2 | 3 | 4 | 2 Gridley |
| 3 | 4 | 5 | 3 Lexington |
| 4 | 5 | 6 | 4 Normal West |
| 5 | 6 | 7 | 5 Mena |
| 6 | 7 | 8 | 6 Bloomington West |
| | | | 7 Bloomington East |
| | | | 8 Holder |

NORMAL EAST, IL
1998

NIMA 3265 III-SERIES V863

THIS MAP COMPLIES WITH NATIONAL MAP ACCURACY STANDARDS
FOR SALE BY U.S. GEOLOGICAL SURVEY, P.O. BOX 25286, DENVER, COLORADO 80225
AND ILLINOIS GEOLOGICAL SURVEY, CHAMPAIGN, ILLINOIS 61820
A FOLDER DESCRIBING TOPOGRAPHIC MAPS AND SYMBOLS IS AVAILABLE ON REQUEST

