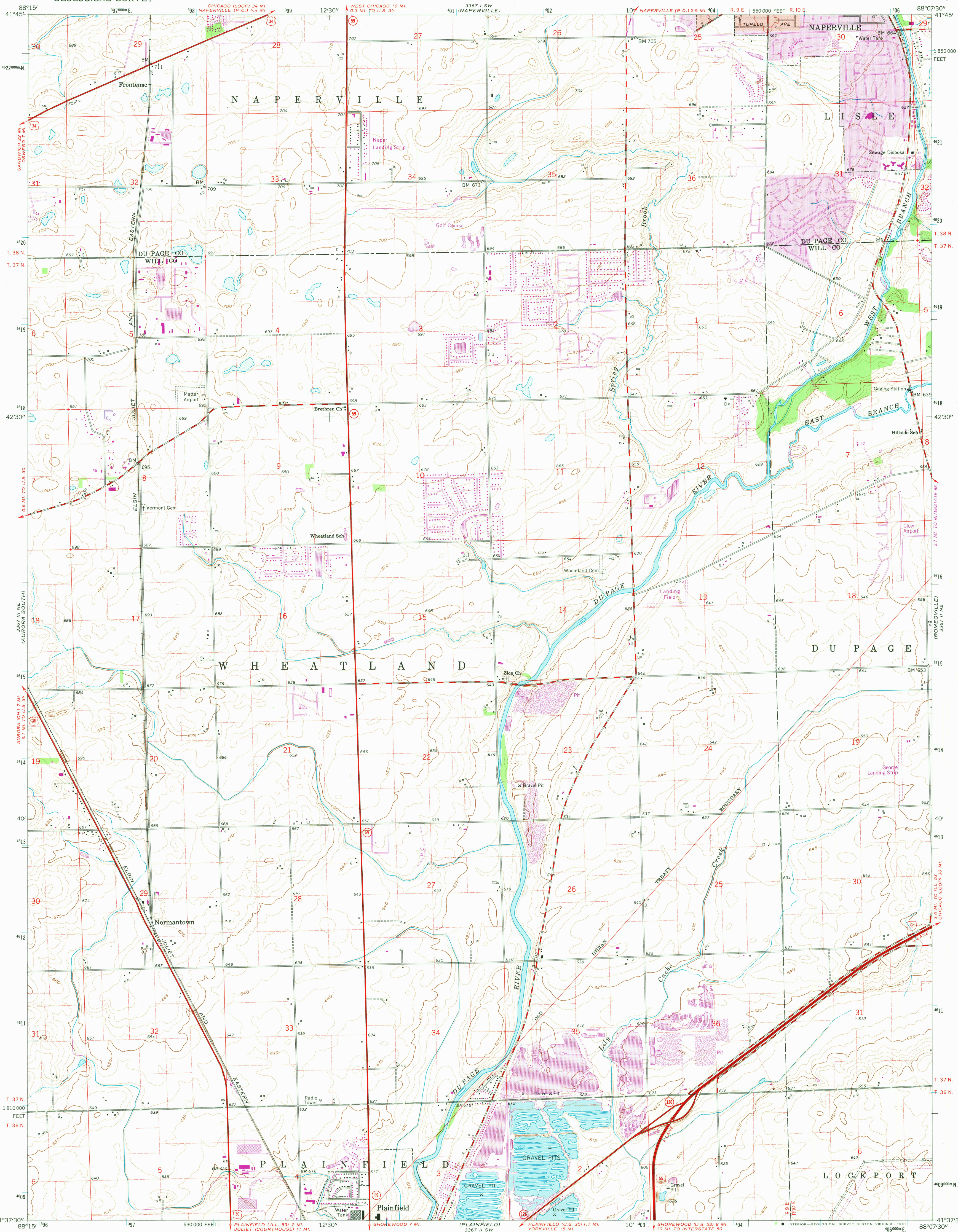


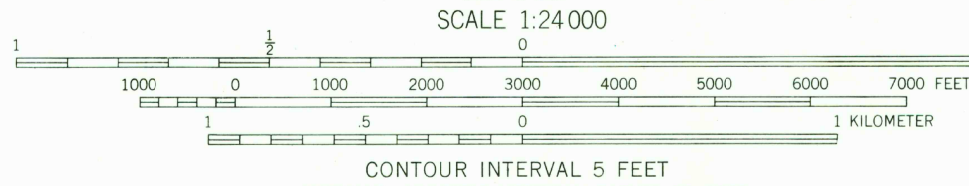
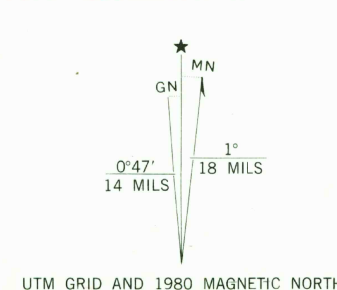
UNITED STATES
DEPARTMENT OF THE INTERIOR
GEOLOGICAL SURVEY

NORMANTOWN QUADRANGLE
ILLINOIS
7.5 MINUTE SERIES (TOPOGRAPHIC)

387.1 SE
(WEAVER)



Mapped, edited, and published by the Geological Survey
Control by USGS and USC&GS
Topography by photogrammetric methods from aerial photographs
taken 1952 and planimetric surveys 1953. Revised from aerial
photographs taken 1962. Field checked 1962
Polyconic projection. 1927 North American datum
10,000-foot grid based on Illinois coordinate system, east zone
1000-meter Universal Transverse Mercator grid ticks,
zone 16, shown in blue
Red tint indicates area in which only landmark buildings are shown
Fine red dashed lines indicate selected fence and field lines where
generally visible on aerial photographs. This information is unchecked
To place on the predicted North American Datum 1983
move the projection lines 2 meters north and
6 meters east as shown by dashed corner ticks



THIS MAP COMPLIES WITH NATIONAL MAP ACCURACY STANDARDS
FOR SALE BY U. S. GEOLOGICAL SURVEY, RESTON, VIRGINIA 22092
AND BY THE STATE GEOLOGICAL SURVEY, URBANA, ILLINOIS 61801
A FOLDER DESCRIBING TOPOGRAPHIC MAPS AND SYMBOLS IS AVAILABLE ON REQUEST

Revisions shown in purple compiled from aerial photographs
taken 1973 and 1978. Map edited 1980
This information not field checked
Purple tint indicates extension of urban area



ROAD CLASSIFICATION	
Primary highway, hard surface	Light-duty road, hard or improved surface
Secondary highway, hard surface	Unimproved road
Interstate Route	U. S. Route
	State Route

NORMANTOWN, ILL.
N 4137.5—W 8807.5/7.5
1962
PHOTOREVISED 1973 AND 1980
DMA 3367 II NW—SERIES V 863

USGS
Historical File
National Mapping Div.
MAY 5 1981
MAY 5 1981
2400