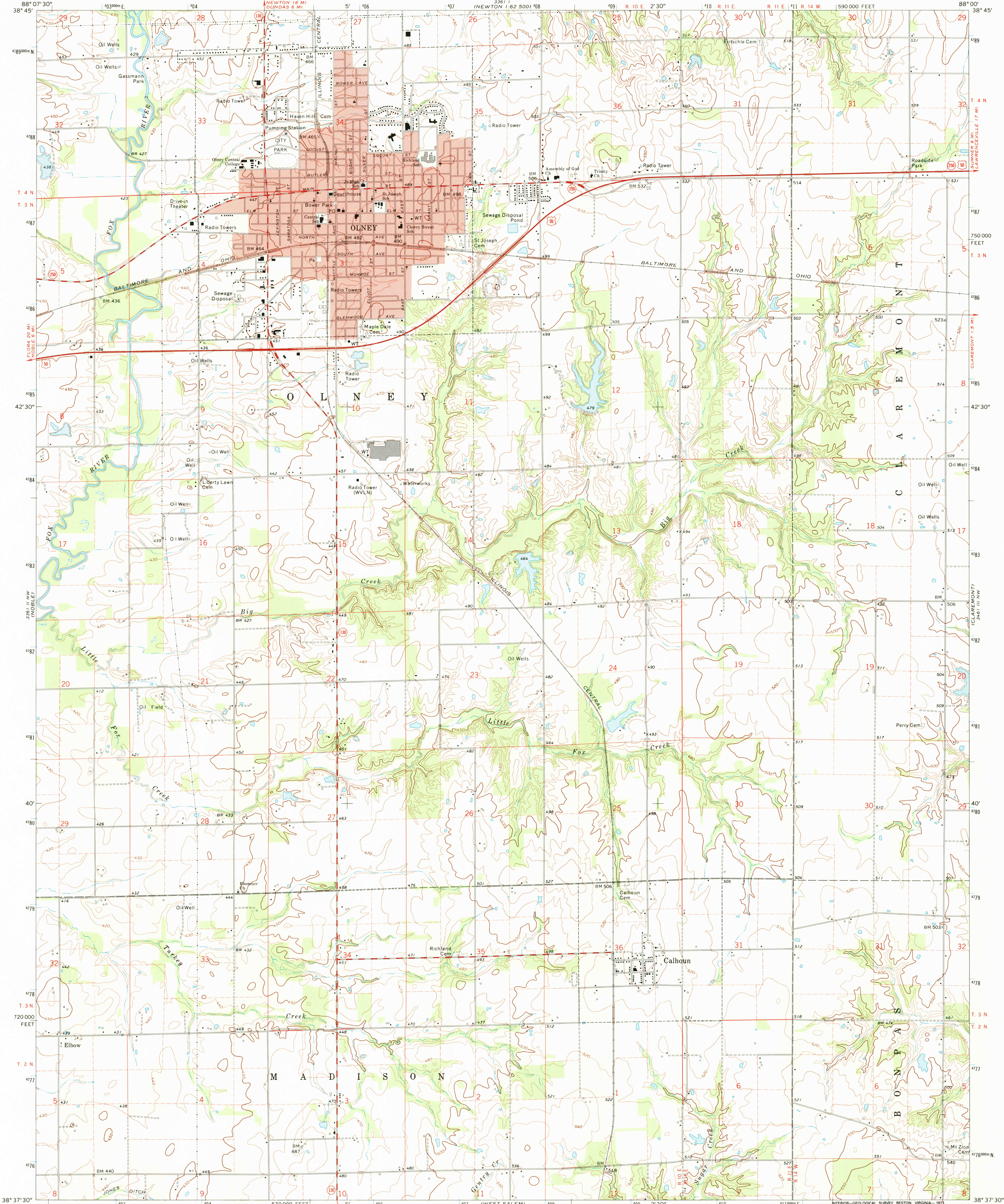


UNITED STATES  
DEPARTMENT OF THE INTERIOR  
GEOLOGICAL SURVEY

OLNEY QUADRANGLE  
ILLINOIS—RICHLAND CO.  
7.5 MINUTE SERIES (TOPOGRAPHIC)  
NE 1/4 OLNEY 15' QUADRANGLE

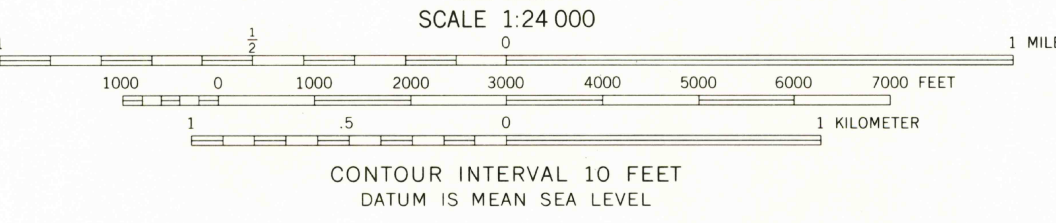
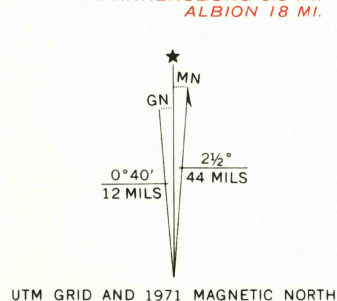


Mapped, edited, and published by the Geological Survey  
Control by USGS and USC&GS

Topography by photogrammetric methods from aerial  
photographs taken 1970. Field checked 1971

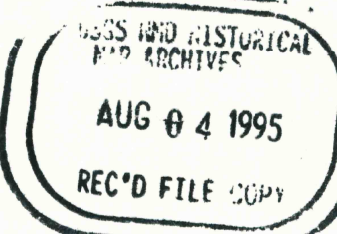
Polyconic projection. 1927 North American datum  
10,000-foot grid based on Illinois coordinate system, east zone  
1000-meter Universal Transverse Mercator grid ticks,  
zone 16, shown in blue

Red tint indicates area in which only landmark buildings are shown  
Fine dashed lines indicate selected fence and field lines where  
generally visible on aerial photographs. This information is unchecked



THIS MAP COMPLIES WITH NATIONAL MAP ACCURACY STANDARDS  
FOR SALE BY U.S. GEOLOGICAL SURVEY, WASHINGTON, D.C. 20242  
AND BY THE STATE GEOLOGICAL SURVEY, URBANA, ILLINOIS 61801  
A FOLDER DESCRIBING TOPOGRAPHIC MAPS AND SYMBOLS IS AVAILABLE ON REQUEST

ROAD CLASSIFICATION  
Primary highway, hard surface  
Secondary highway, hard surface  
Interstate Route  
U.S. Route  
State Route  
Light-duty road, hard or improved surface  
Unimproved road



OLNEY, ILL.  
NE 1/4 OLNEY 15' QUADRANGLE  
N3837.5—W8800/7.5  
1971  
AMS 3361 II NE—SERIES V863

