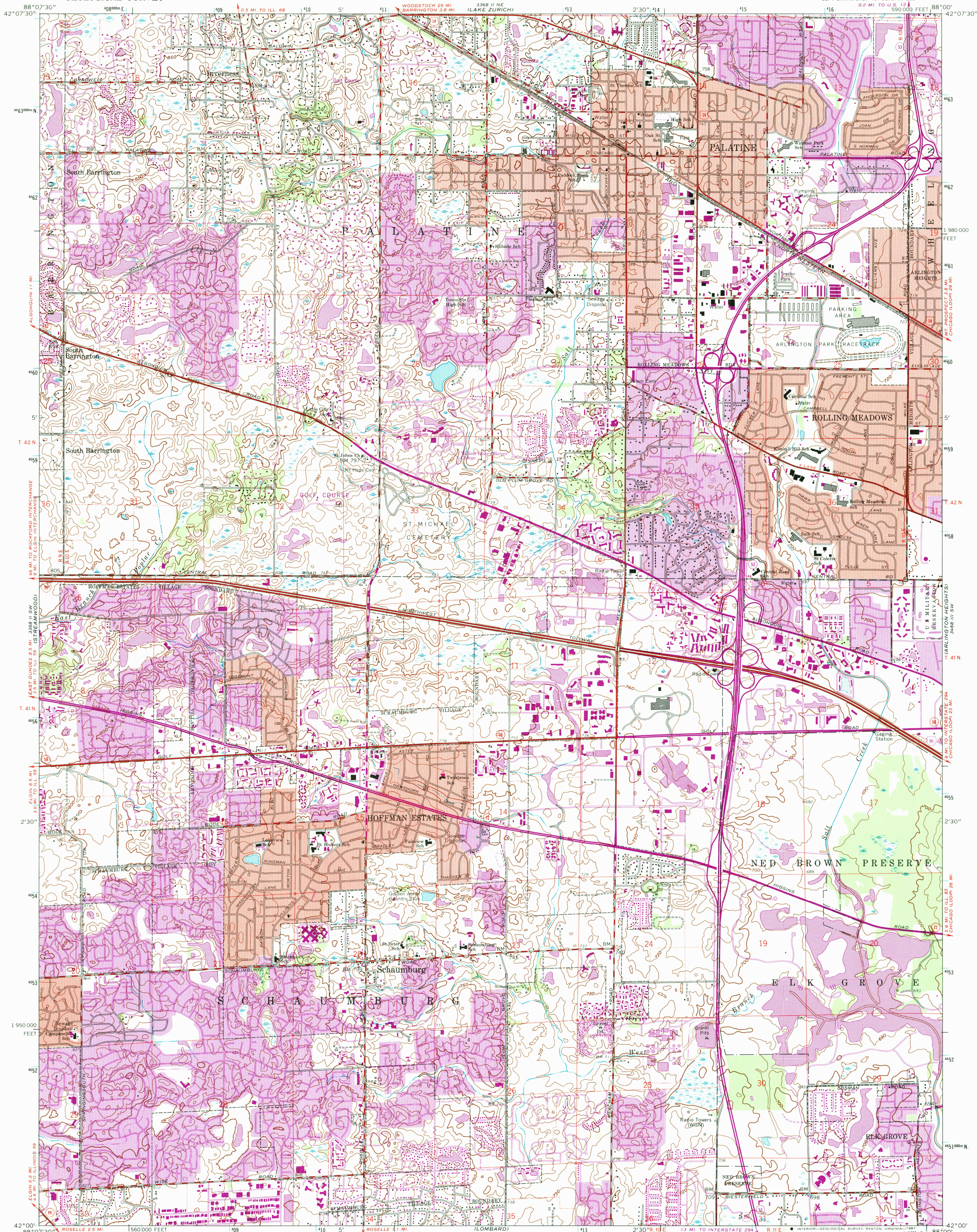


UNITED STATES
DEPARTMENT OF THE INTERIOR
GEOLOGICAL SURVEY

PALATINE QUADRANGLE
ILLINOIS—COOK CO.
7.5 MINUTE SERIES (TOPOGRAPHIC)

SE/4 BARRINGTON 15' QUADRANGLE
0.2 MI. TO U.S. 124
590 000 FEET



Mapped, edited, and published by the Geological Survey
Control by USGS, USC&GS, and Cook County Highway Department

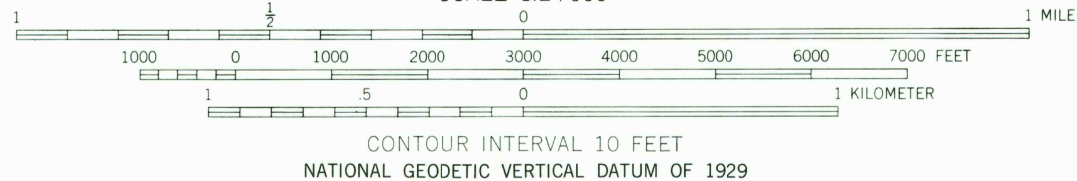
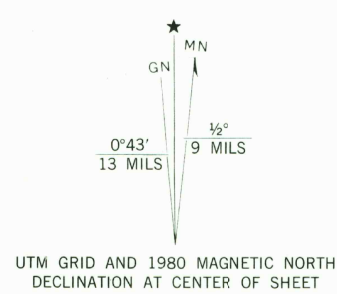
Topography by photogrammetric methods from aerial photographs
taken 1952 and planetable surveys 1953. Revised from aerial
photographs taken 1960. Field checked 1961

Polyconic projection. 1927 North American datum
10,000-foot grid based on Illinois coordinate system, east zone
1000-meter Universal Transverse Mercator grid ticks,
zone 16, shown in blue

Red tint indicates areas in which only landmark buildings are shown

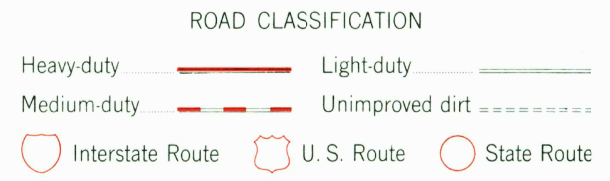
To place on the predicted North American Datum 1983
move the projection lines 2 meters north and
6 meters east as shown by dashed corner ticks

There may be private inholdings within the boundaries of
the National or State reservations shown on this map



THIS MAP COMPLIES WITH NATIONAL MAP ACCURACY STANDARDS
FOR SALE BY U. S. GEOLOGICAL SURVEY, RESTON, VIRGINIA 22092
AND ILLINOIS GEOLOGICAL SURVEY, CHAMPAIGN, ILLINOIS 61820
A FOLDER DESCRIBING TOPOGRAPHIC MAPS AND SYMBOLS IS AVAILABLE ON REQUEST

Revisions shown in purple compiled from aerial photographs
taken 1972 and 1978. Map edited 1980
This information not field checked
Purple tint indicates extension of urban area



QUADRANGLE LOCATION

PALATINE, ILL.
SE/4 BARRINGTON 15' QUADRANGLE
42088-A1-TF-024

1961
PHOTOREVISED 1972 AND 1980
DMA 3368 II SE—SERIES Y883

