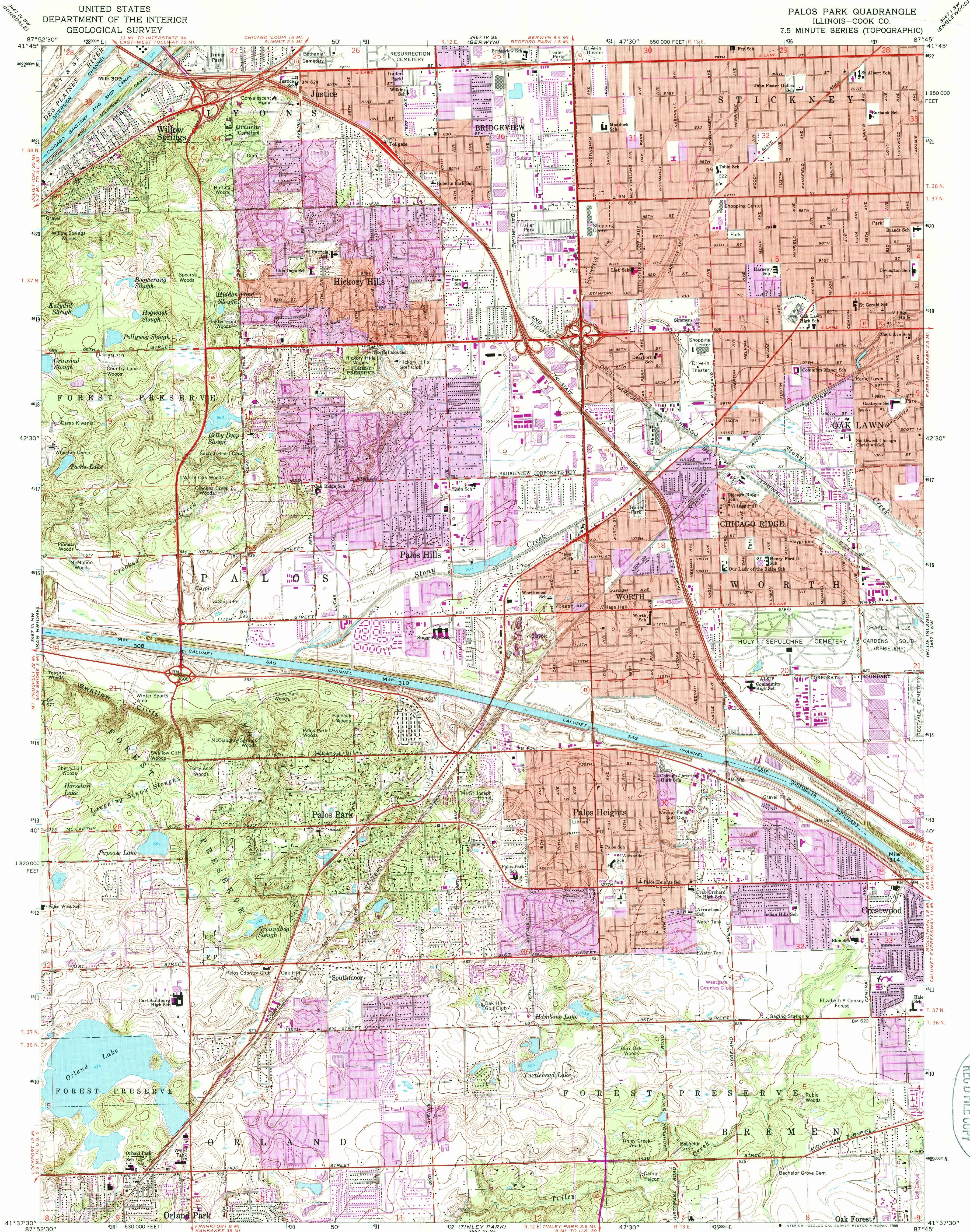


UNITED STATES  
DEPARTMENT OF THE INTERIOR  
GEOLOGICAL SURVEY

PALOS PARK QUADRANGLE  
ILLINOIS-COOK CO.  
7.5 MINUTE SERIES (TOPOGRAPHIC)



Mapped, edited, and published by the Geological Survey  
in cooperation with State of Illinois Geological Survey

Control by USGS, USCG&S, U.S. Lake Survey,  
and Cook County Highway Department

Planimetry by photogrammetric methods from aerial photographs  
taken 1962-63. Topography by planetable surveys 1925  
Revised 1963

Polycyclic projection, 1927 North American datum  
10,000-foot grid based on Illinois coordinate system, east zone  
1000-meter Universal Transverse Mercator grid ticks,  
zone 16, shown in blue

Red tint indicates areas in which only landmark buildings are shown  
To place on the predicted North American Datum 1983  
move the projection lines 1 meter north and  
5 meters east as shown by dashed corner ticks

UTM GRID AND 1980 MAGNETIC NORTH  
DECLINATION AT CENTER OF SHEET

There may be private inholdings within  
the boundaries of the National or  
State reservations shown on this map

THIS MAP COMPLIES WITH NATIONAL MAP ACCURACY STANDARDS  
FOR SALE BY U.S. GEOLOGICAL SURVEY, DENVER, COLORADO 80225, OR RESTON, VIRGINIA 22092  
AND ILLINOIS GEOLOGICAL SURVEY, CHAMPAIGN, ILLINOIS 61820

A FOLDER DESCRIBING TOPOGRAPHIC MAPS AND SYMBOLS IS AVAILABLE ON REQUEST

Revisions shown in purple compiled from aerial photographs  
taken 1973 and 1978. Map edited 1980  
This information not field checked  
Purple tint indicates extension of urban area

ROAD CLASSIFICATION  
Heavy-duty ——— Light-duty ———  
Medium-duty ——— Unimproved dirt ———  
Interstate Route ——— U.S. Route ——— State Route ———

PALOS PARK, ILL.  
41087-77-TF-024

1963  
PHOTOREVISED 1973 AND 1980  
DMA 5467 III NE-SERIES V853