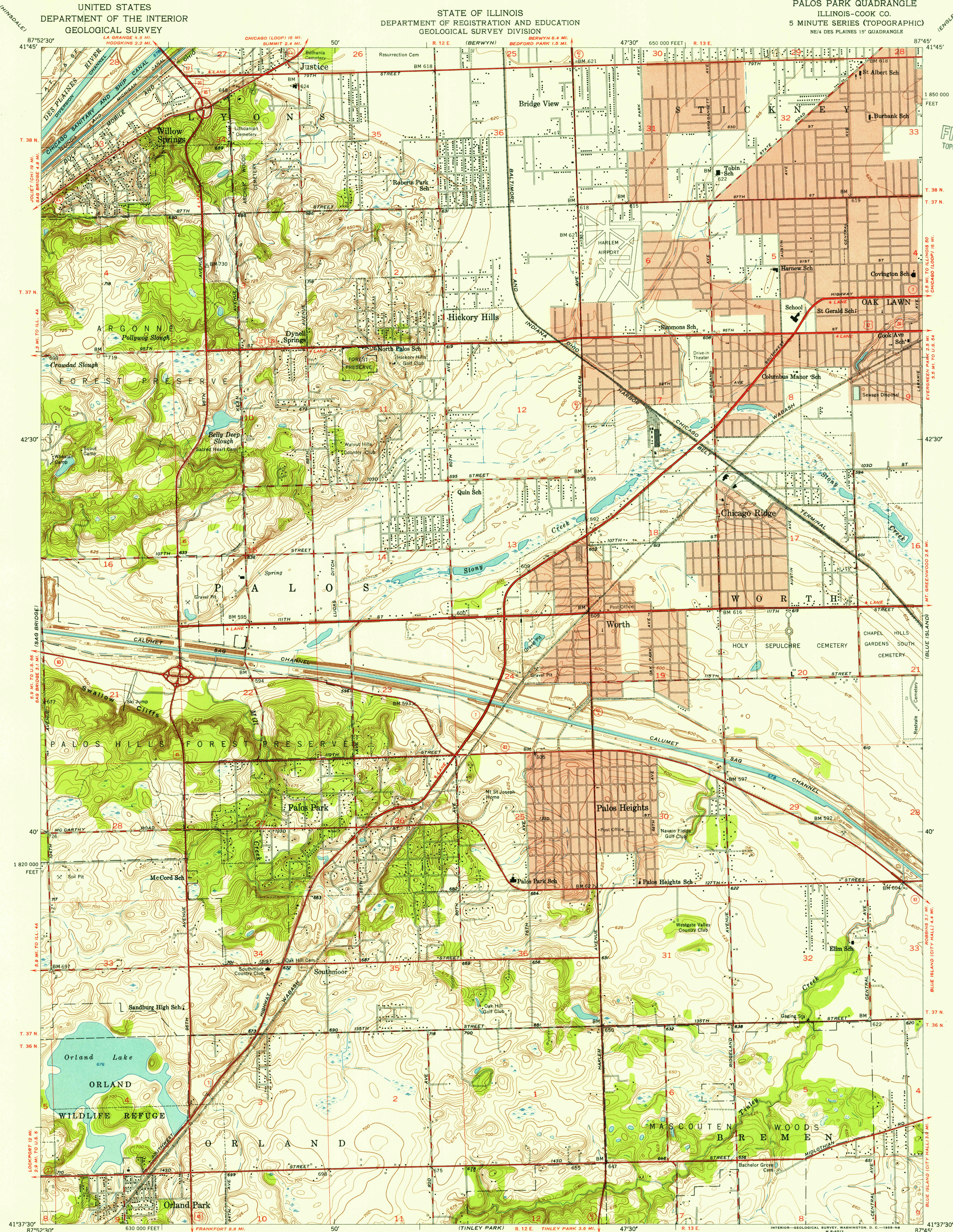
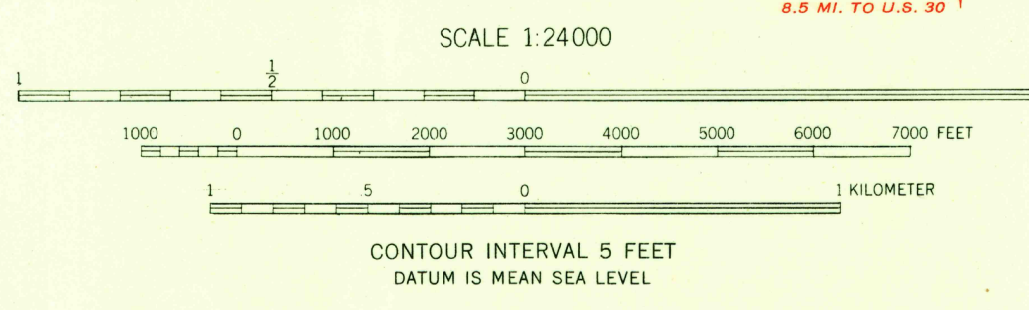


U.S.G.S.  
FILE COPY  
TOPOGRAPHIC DIVISION

U.S.G.S.  
FILE COPY  
TOPOGRAPHIC DIVISION



Mapped, edited, and published by the Geological Survey  
Control by USGS, USC&GS, and Cook County Highway Department  
Culture and drainage in part compiled from aerial photographs  
Topography by plane-table surveys 1925. Revised 1953  
Polyconic projection. 1927 North American datum  
10,000-foot grid based on Illinois coordinate system,  
east zone  
Red tint indicates areas in which only  
landmark buildings are shown



USGS  
Historical File  
Topographic Division

ROAD CLASSIFICATION  
Heavy-duty 4 LANE 16 LANE Light-duty  
Medium-duty 4 LANE 16 LANE Unimproved dirt  
U. S. Route State Route

PALOS PARK, ILL.  
NE/4 DES PLAINES 15' QUADRANGLE  
N4137.5-W8745/7.5

1953

APR 26 1953

THIS MAP COMPLIES WITH NATIONAL MAP ACCURACY STANDARDS  
FOR SALE BY U. S. GEOLOGICAL SURVEY, WASHINGTON 25, D. C.  
AND BY THE STATE GEOLOGICAL SURVEY, URBANA, ILLINOIS  
A FOLDER DESCRIBING TOPOGRAPHIC MAPS AND SYMBOLS IS AVAILABLE ON REQUEST