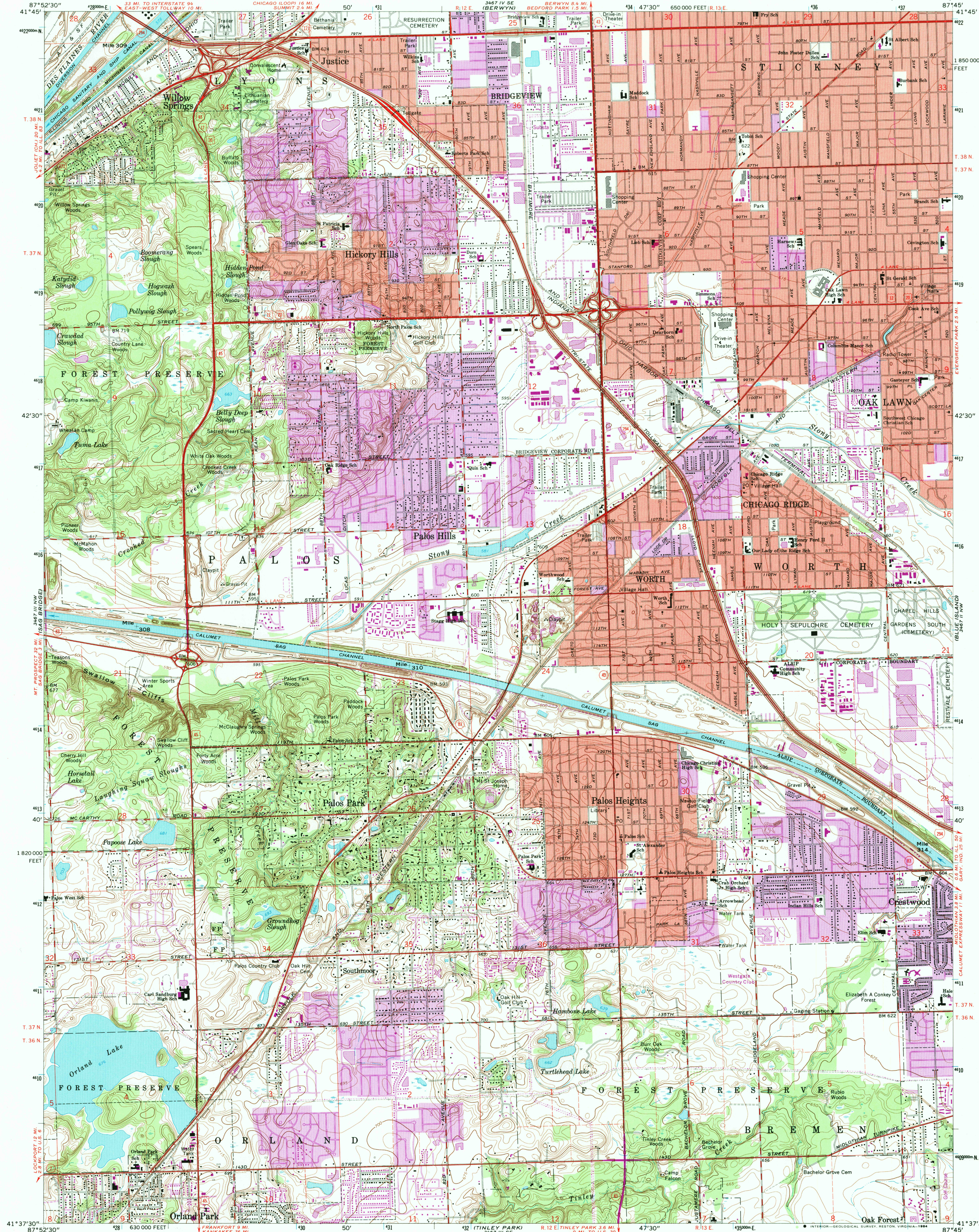
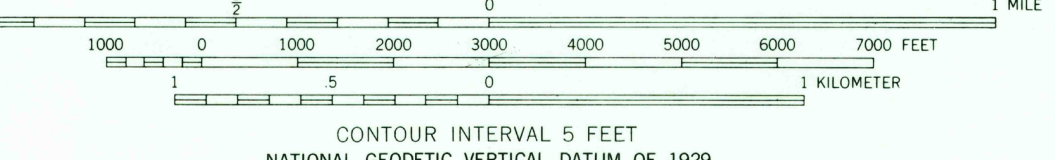
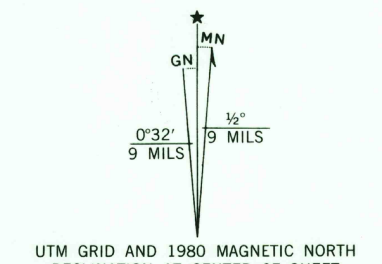


UNITED STATES
DEPARTMENT OF THE INTERIOR
GEOLOGICAL SURVEY

PALOS PARK QUADRANGLE
ILLINOIS-COOK CO.
7.5 MINUTE SERIES (TOPOGRAPHIC)

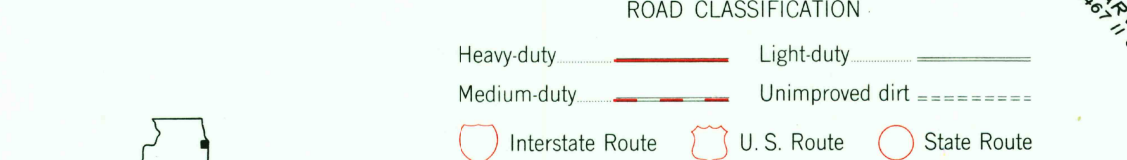


Mapped, edited, and published by the Geological Survey
in cooperation with State of Illinois Geological Survey
Control by USGS, USC&GS, U.S. Lake Survey,
and Cook County Highway Department
Planimetry by photogrammetric methods from aerial photographs
taken 1962-63. Topography by planimetric surveys 1925
Revised 1963
Polyconic projection. 1927 North American datum
10,000-foot grid based on Illinois coordinate system, east zone
1000-meter Universal Transverse Mercator grid ticks,
zone 16, shown in blue
Red tint indicates areas in which only landmark buildings are shown
To place on the predicted North American Datum 1983
move the projection lines 1 meter north and
5 meters east as shown by dashed corner ticks



CONTOUR INTERVAL 5 FEET
NATIONAL GEODETIC VERTICAL DATUM OF 1929

THIS MAP COMPLIES WITH NATIONAL MAP ACCURACY STANDARDS
FOR SALE BY U.S. GEOLOGICAL SURVEY, RESTON, VIRGINIA 22092
AND BY THE STATE GEOLOGICAL SURVEY, URBANA, ILLINOIS 61801
A FOLDER DESCRIBING TOPOGRAPHIC MAPS AND SYMBOLS IS AVAILABLE ON REQUEST



QUADRANGLE LOCATION

Revisions shown in purple compiled from aerial photographs
taken 1973 and 1978. Map edited 1980
This information not field checked
Purple tint indicates extension of urban area

1963
PHOTOREVISED 1973 AND 1980
DMA 3467 III NE-SERIES V863

PALOS PARK, ILL.
N4137.5-W8745.7.5