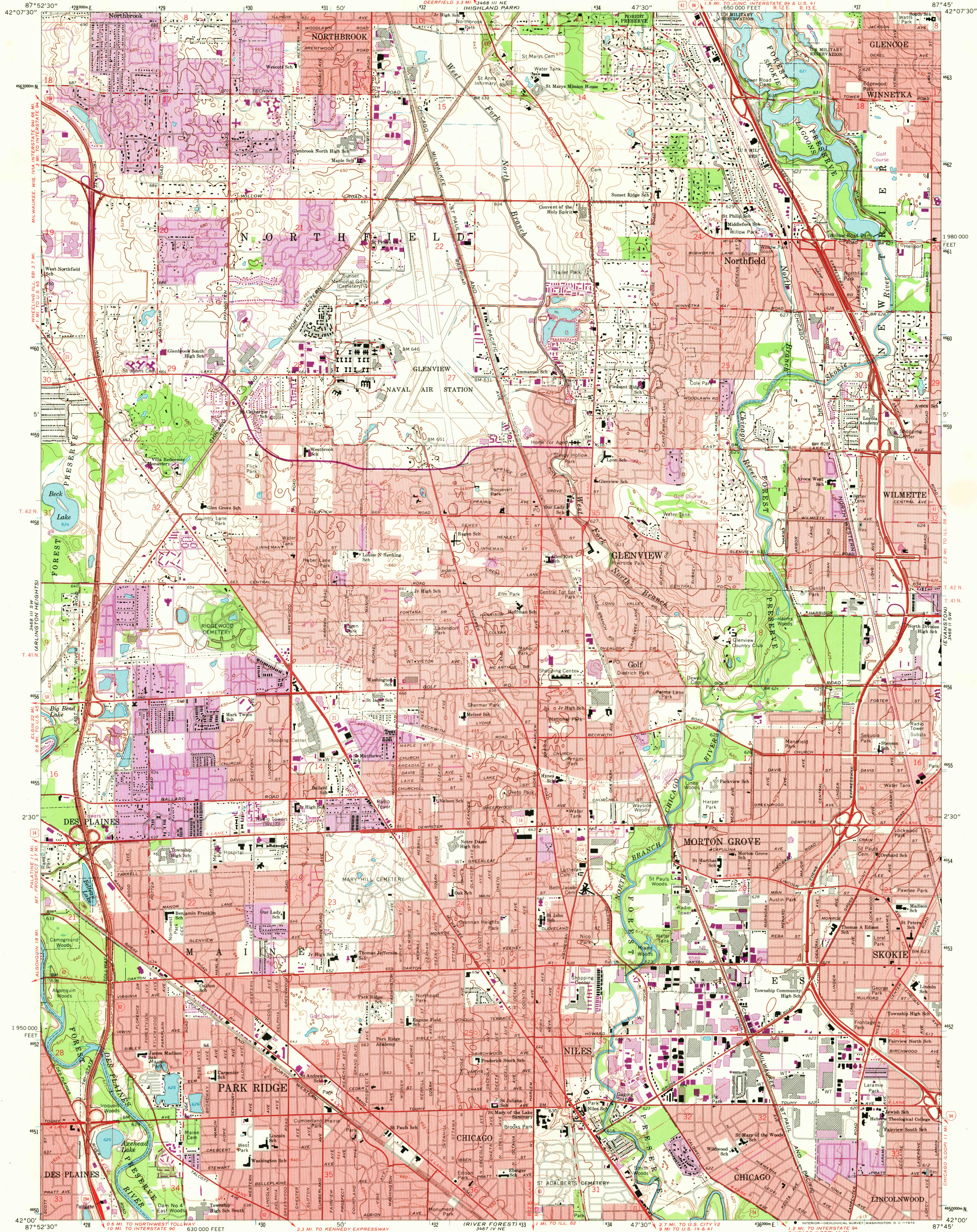
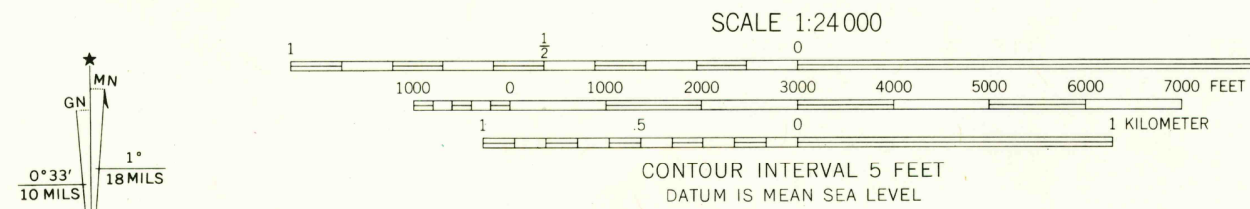


UNITED STATES
DEPARTMENT OF THE INTERIOR
GEOLOGICAL SURVEY

PARK RIDGE QUADRANGLE
ILLINOIS—COOK CO.
7.5 MINUTE SERIES (TOPOGRAPHIC)



Mapped, edited, and published by the Geological Survey in cooperation with State of Illinois Geological Survey
Control by USGS, USC&GS, and Cook County Highway Department
Planimetry by photogrammetric methods from aerial photographs taken 1962-63. Topography by planimetric surveys 1926
Revised 1963
Polyconic projection. 1927 North American datum
10,000-foot grid based on Illinois coordinate system, east zone
1000-meter Universal Transverse Mercator grid ticks, zone 16, shown in blue
Red tint indicates areas in which only landmark buildings are shown
Fine red dashed lines indicate selected fence and field lines where generally visible on aerial photographs. This information is unchecked



THIS MAP COMPLIES WITH NATIONAL MAP ACCURACY STANDARDS
FOR SALE BY U.S. GEOLOGICAL SURVEY, WASHINGTON, D. C. 20242
AND BY THE STATE GEOLOGICAL SURVEY, URBANA, ILLINOIS 61801
A FOLDER DESCRIBING TOPOGRAPHIC MAPS AND SYMBOLS IS AVAILABLE ON REQUEST

ROAD CLASSIFICATION
Heavy-duty ——— Light-duty ———
Medium-duty ——— Unimproved dirt ———
Interstate Route — U.S. Route — State Route —
QUADRANGLE LOCATION
Revisions shown in purple compiled from aerial photographs taken 1972. This information not field checked
Purple tint indicates extension of urban areas
PARK RIDGE, ILL.
N4200—W8745/7.5
1963
PHOTOREVISED 1972
AMS 3468 III SE—SERIES V663