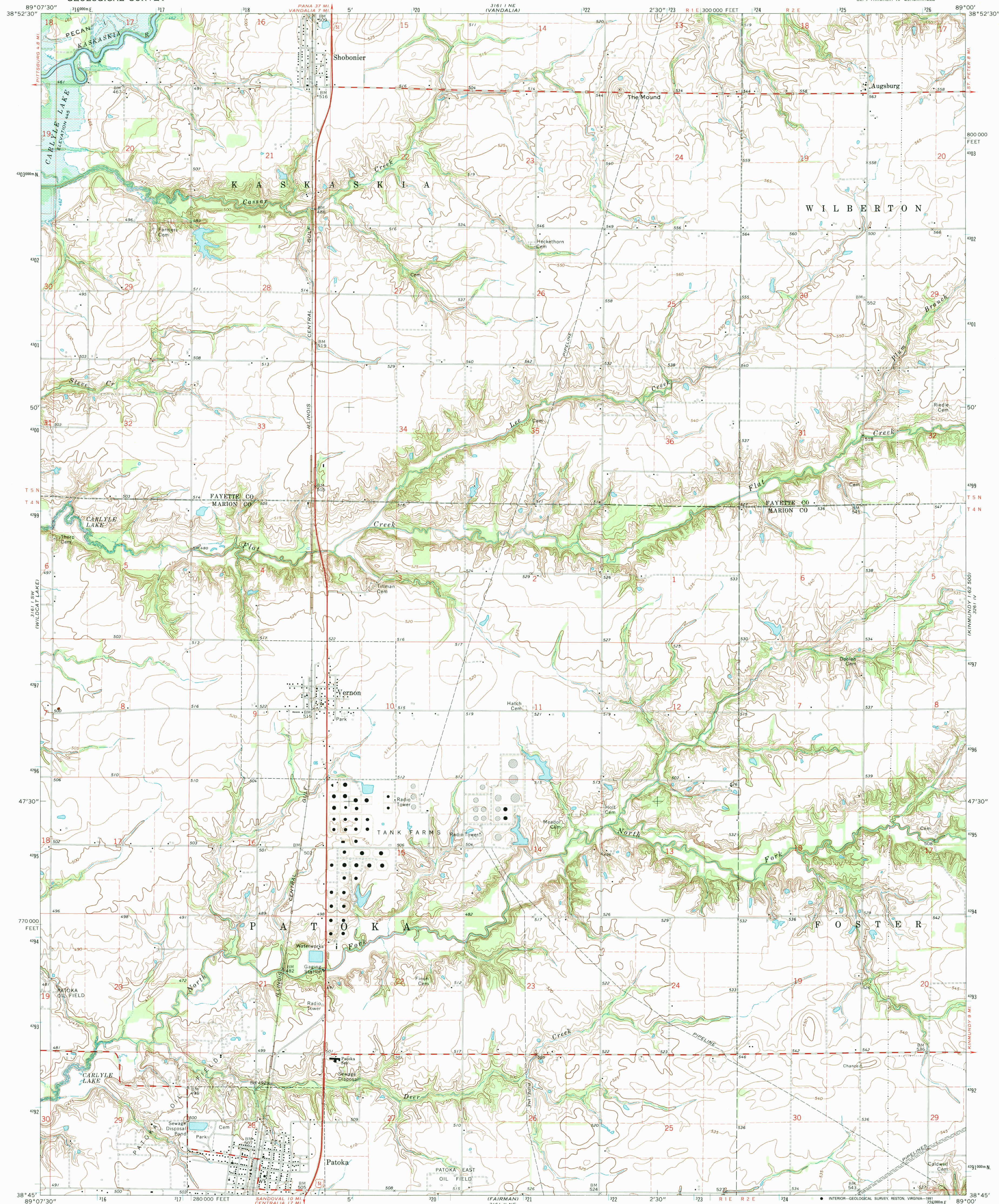


UNITED STATES
DEPARTMENT OF THE INTERIOR
GEOLOGICAL SURVEY

PATOKA QUADRANGLE
ILLINOIS
7.5 MINUTE SERIES (TOPOGRAPHIC)
SE/4 VANDALIA 15' QUADRANGLE



Mapped, edited, and published by the Geological Survey

Control by USGS and NOS/NOAA

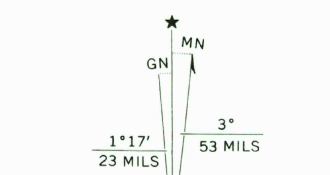
Topography by photogrammetric methods from aerial photographs taken 1973. Field checked 1974

Projection and 10,000-foot grid ticks: Illinois coordinate system, east zone (transverse Mercator)
1000-metre Universal Transverse Mercator grid ticks, zone 16, shown in blue. 1927 North American datum

Areas covered by dashed light-blue pattern are subject to controlled inundation

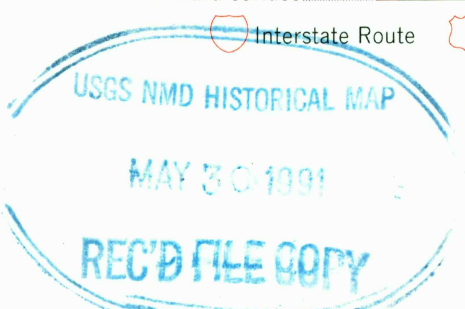
Fine red dashed lines indicate selected fence and field lines where generally visible on aerial photographs. This information is unchecked

Map photoinspected 1981
No major culture or drainage changes observed



SCALE 1:24 000
CONTOUR INTERVAL 5 FEET
NATIONAL GEODETIC VERTICAL DATUM OF 1929
THIS MAP COMPLIES WITH NATIONAL MAP ACCURACY STANDARDS
FOR SALE BY U. S. GEOLOGICAL SURVEY, DENVER, COLORADO 80225, OR RESTON, VIRGINIA 22092
AND ILLINOIS GEOLOGICAL SURVEY, CHAMPAIGN, ILLINOIS 61820
A FOLDER DESCRIBING TOPOGRAPHIC MAPS AND SYMBOLS IS AVAILABLE ON REQUEST

ROAD CLASSIFICATION
Primary highway, hard surface
Secondary highway, hard surface
Unimproved road
Light-duty road, hard or improved surface
Unimproved road
Interstate Route
U. S. Route
State Route



PATOKA, ILL.
SE/4 VANDALIA 15' QUADRANGLE
N3845-W8900/7.5
1974
PHOTOINSPECTED 1981
AMS 3161 I SE-SERIES V863