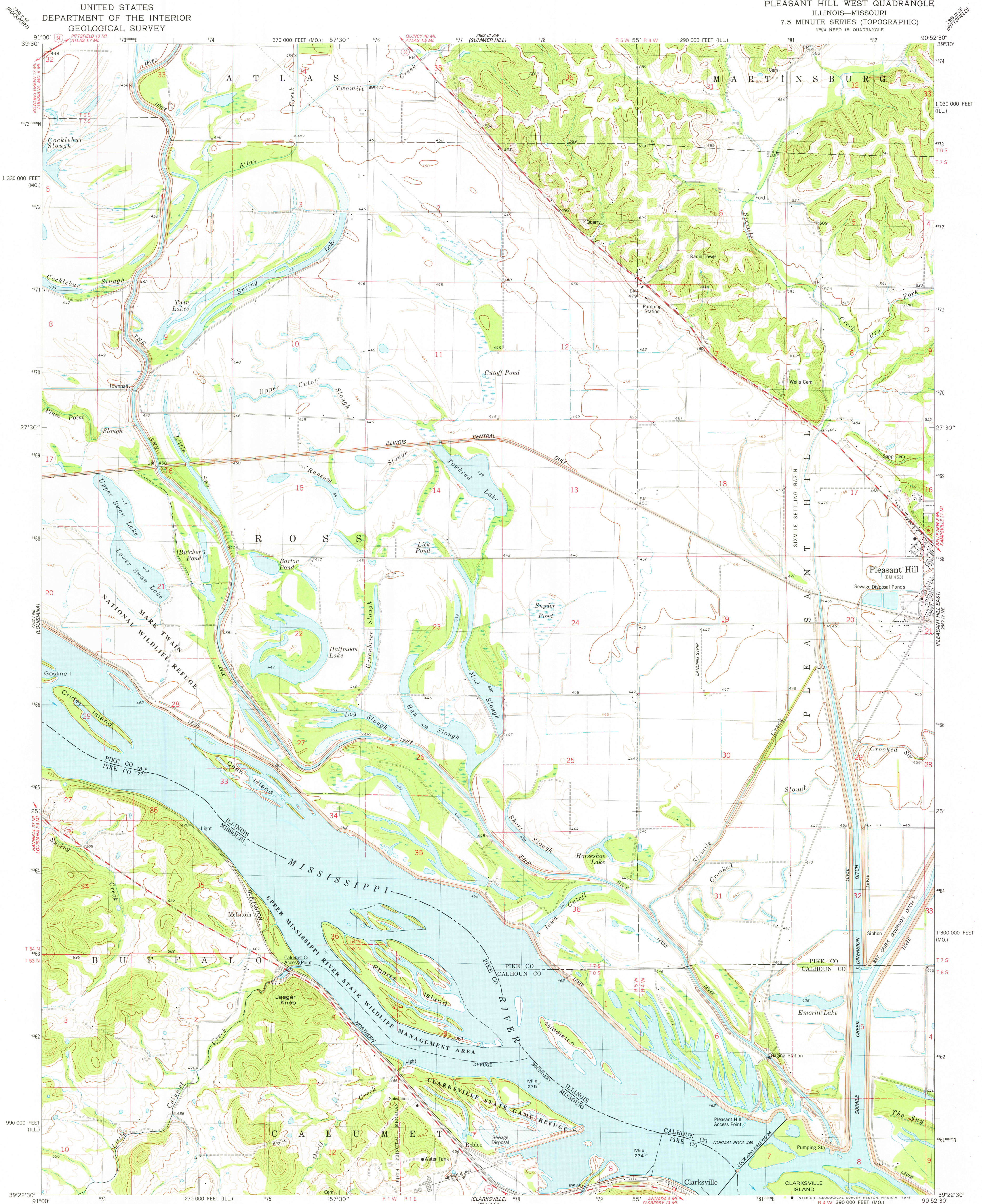


UNITED STATES
DEPARTMENT OF THE INTERIOR
GEOLOGICAL SURVEY

PLEASANT HILL WEST QUADRANGLE
ILLINOIS—MISSOURI
7.5 MINUTE SERIES (TOPOGRAPHIC)
NW/4 NE/15' QUADRANGLE



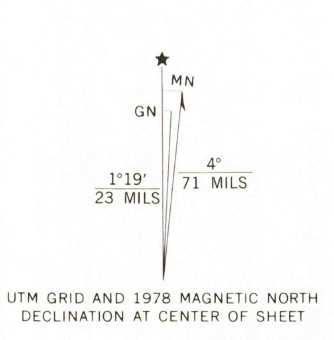
Mapped, edited, and published by the Geological Survey

Control by USGS and NOS/NOAA
Topography by photogrammetric methods from aerial photographs
taken 1972 and 1974 and in part by the Corps of Engineers
Field checked 1975. Map edited 1978

Projection: Illinois coordinate system, west zone
(transverse Mercator)
10,000-foot grid ticks based on Illinois coordinate system;
west zone and Missouri coordinate system, east zone
1000-meter Universal Transverse Mercator grid, zone 15
1927 North American datum

Unidentified bounded areas in Missouri are part of the Upper
Mississippi River State Wildlife Management Area

Fine red dashed lines indicate selected fence and field lines where
generally visible on aerial photographs. This information is unchecked



SCALE 1:24,000
1000 0 1000 2000 3000 4000 5000 6000 7000 FEET
1 KILOMETER
CONTOUR INTERVAL 5 AND 20 FEET
NATIONAL GEODETIC VERTICAL DATUM OF 1929
THIS MAP COMPLIES WITH NATIONAL MAP ACCURACY STANDARDS
FOR SALE BY U.S. GEOLOGICAL SURVEY, DENVER, COLORADO 80225, OR RESTON, VIRGINIA 22092.
STATE GEOLOGICAL SURVEY, URBANA, ILLINOIS 61801.
AND THE DIVISION OF RESEARCH AND TECHNICAL INFORMATION
MISSOURI DEPARTMENT OF NATURAL RESOURCES, ROLLA, MISSOURI 65401
A FOLDER DESCRIBING TOPOGRAPHIC MAPS AND SYMBOLS IS AVAILABLE ON REQUEST



ROAD CLASSIFICATION
Primary highway, hard surface Light-duty road, hard or improved surface
Secondary highway, hard surface Unimproved road
Interstate Route U.S. Route State Route
USGS
Historical File
Topographic Division
PLEASANT HILL WEST, ILL.—MO.
NW/4 NE/15' QUADRANGLE
N3922.5-W9052.5/7.5
1978
AMS 2862 IV NW—SERIES V863

NOV 06 1978