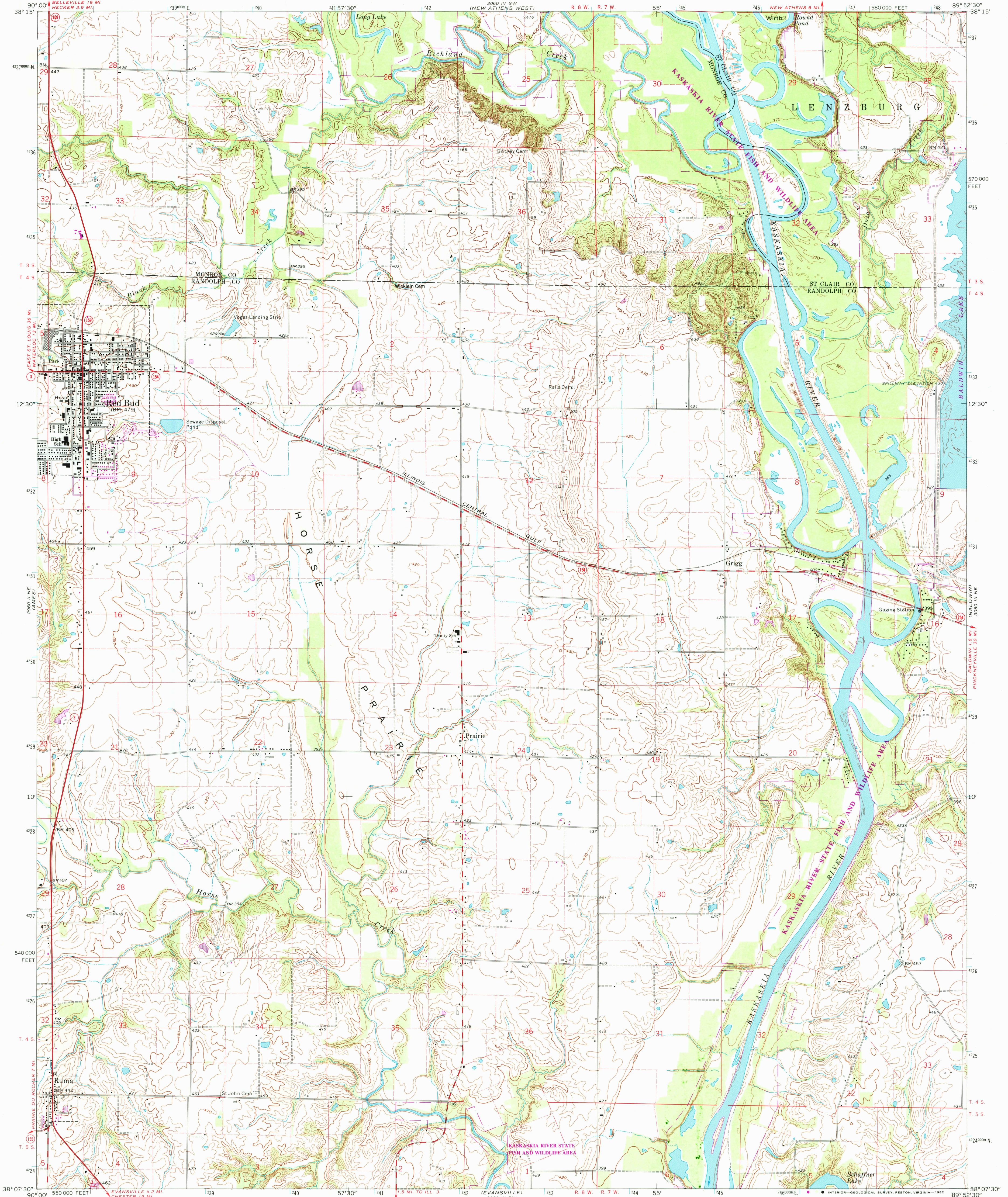


UNITED STATES
DEPARTMENT OF THE INTERIOR
GEOLOGICAL SURVEY

RED BUD QUADRANGLE
ILLINOIS
7.5 MINUTE SERIES (TOPOGRAPHIC)



Mapped, edited, and published by the Geological Survey

Control by USGS and USC&GS

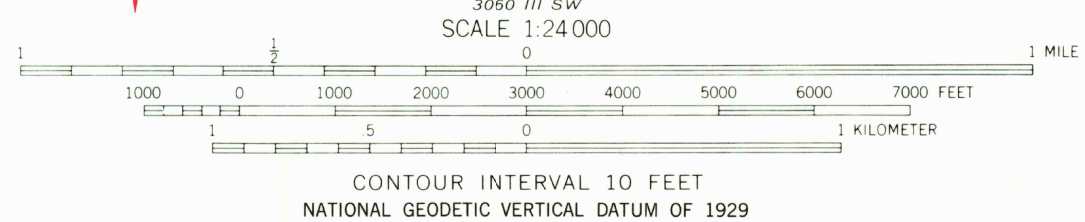
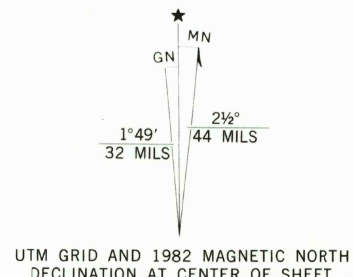
Topography by photogrammetric methods from aerial photographs taken 1968. Field checked 1970.

Polyconic projection. 1927 North American datum 10,000-foot grid based on Illinois coordinate system, west zone 1000-meter Universal Transverse Mercator grid ticks, zone 16, shown in blue.

To place on the predicted North American Datum 1983 move the projection lines 2 meters south and 8 meters east as shown by dashed corner ticks.

There may be private inholdings within the boundaries of the National or State reservations shown on this map.

Revisions shown in purple compiled from aerial photographs taken 1980 and other sources. This information not field checked. Map edited 1982.



THIS MAP COMPLIES WITH NATIONAL MAP ACCURACY STANDARDS
FOR SALE BY U. S. GEOLOGICAL SURVEY, RESTON, VIRGINIA 22092
AND BY THE STATE GEOLOGICAL SURVEY, CHAMPAIGN, ILLINOIS 61820
A FOLDER DESCRIBING TOPOGRAPHIC MAPS AND SYMBOLS IS AVAILABLE ON REQUEST



ROAD CLASSIFICATION
Primary highway, all weather, Light-duty road, all weather, hard surface, improved surface
Secondary highway, all weather, Unimproved road, fair or dry weather
State Route

RED BUD, ILL.

N 3807.5—W 8952.5/7.5

1970
PHOTOREVISED 1982
DMA 3060 III NW—SERIES V863

SEP 7 1982

350